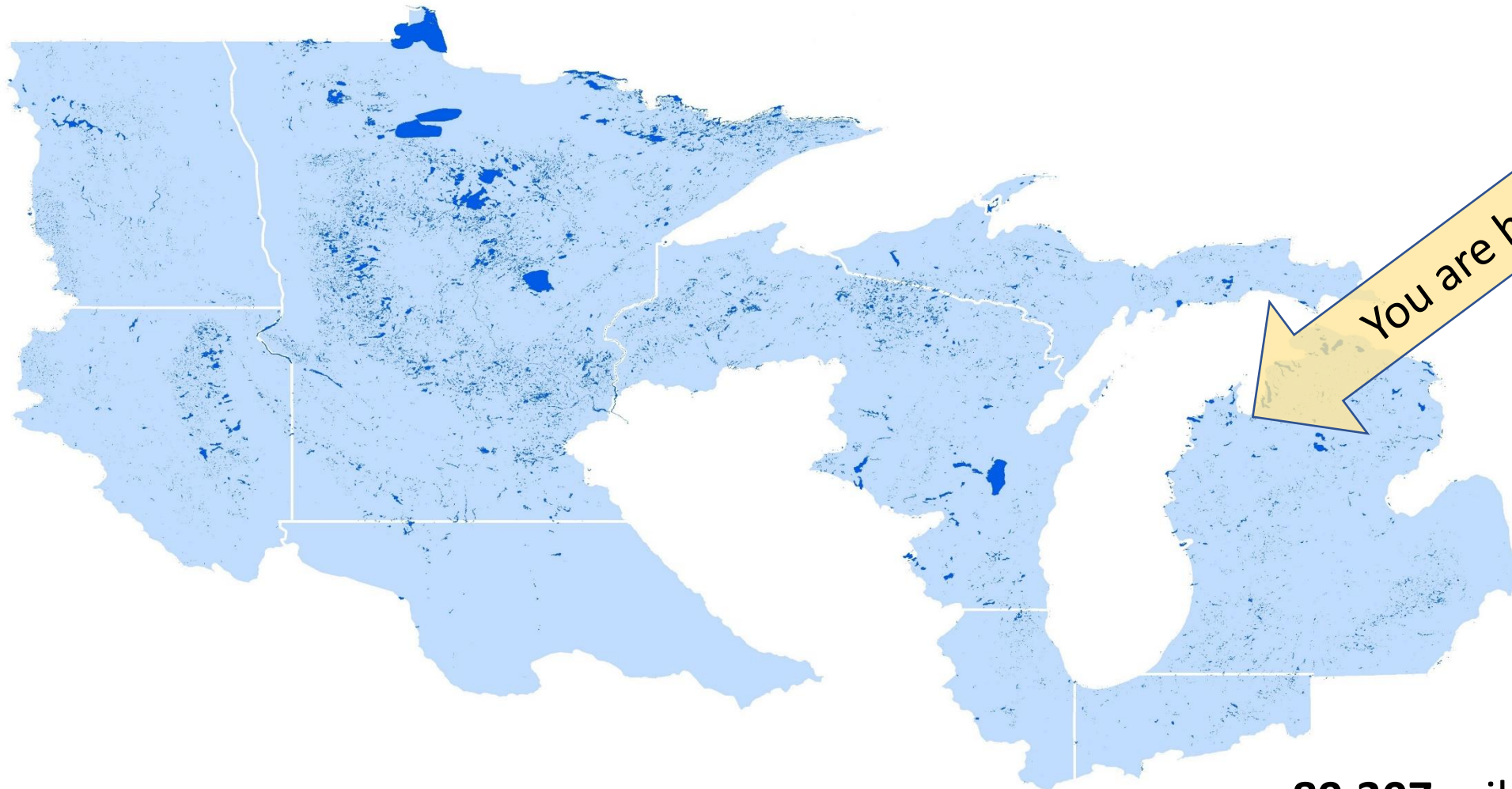




Partnership overview to the
National Fish Habitat Partnership Board
Joe Nohner
October 24, 2019



Midwest Glacial Lakes Partnership



8 states
689 partners
40,049 lakes
89,307 miles of shoreline
5,951,770 acres of lake surface area

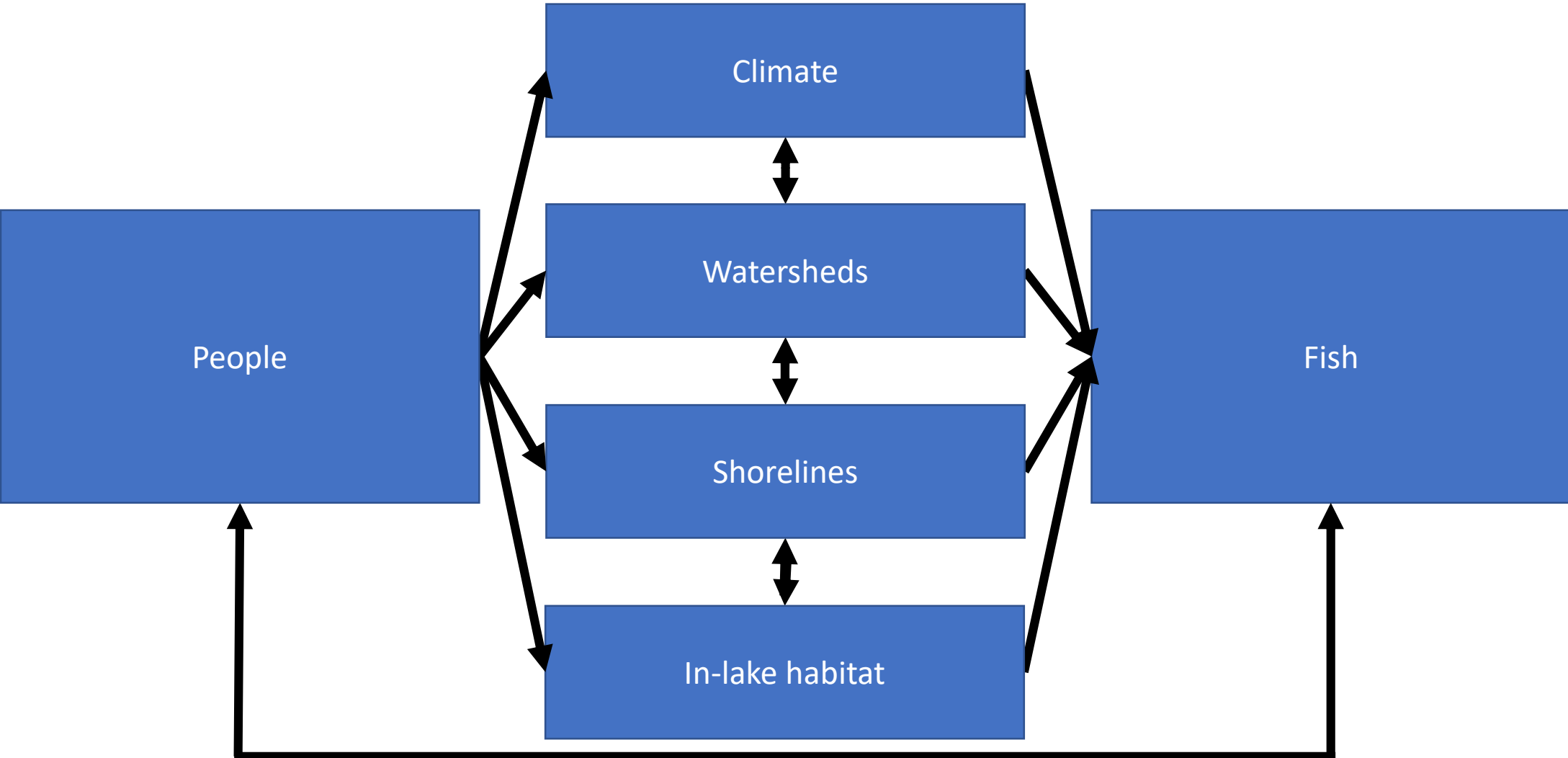
Midwest Glacial Lakes Partnership

- Formed in 2009
- Mission: Work together to protect, rehabilitate, and enhance sustainable fish habitats in glacial lakes of the Midwest for the use and enjoyment of current and future generations.



Joe Nohner, MGLP Coordinator

What is affecting Midwest glacial lake fish habitat?*

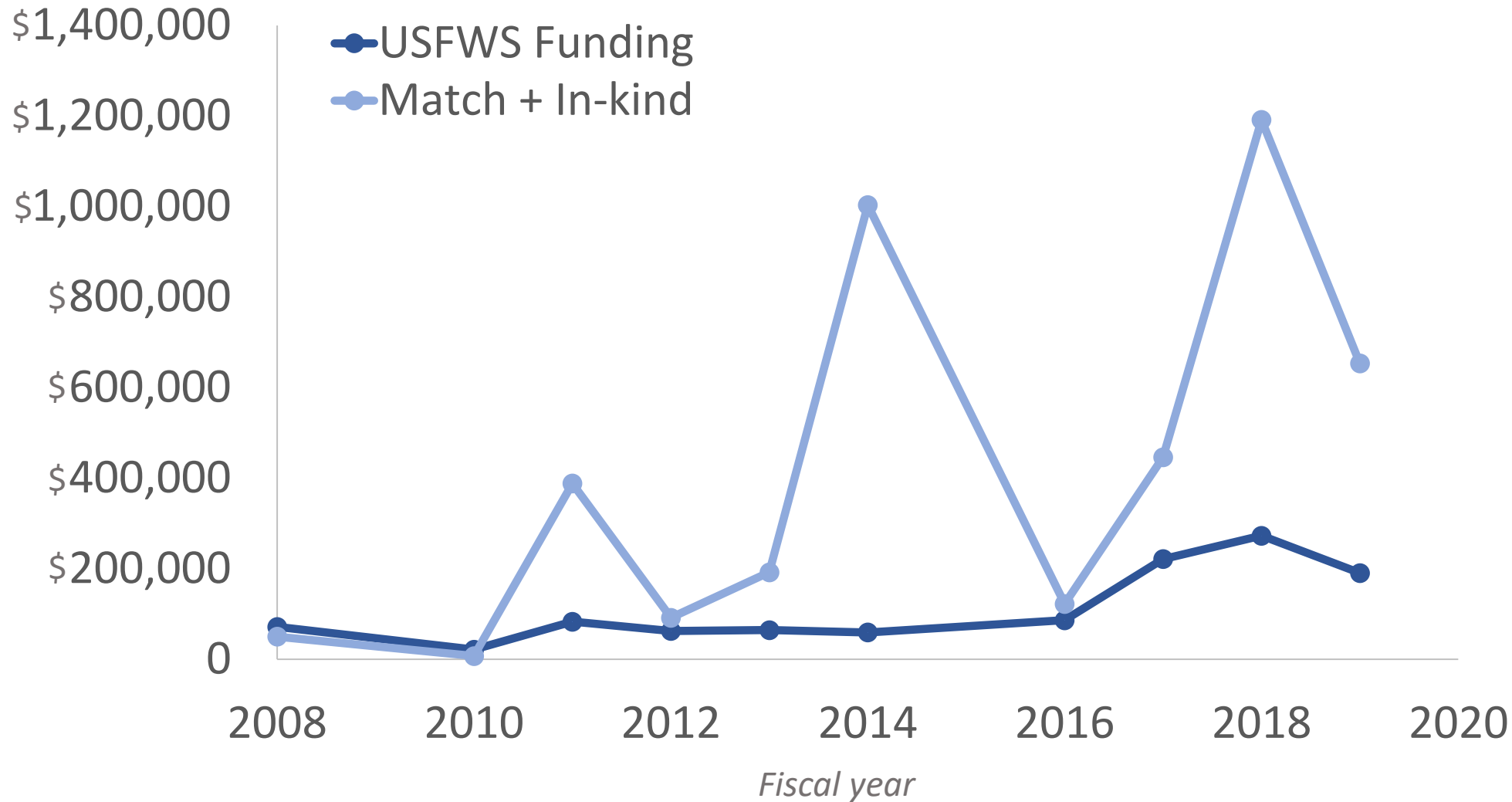


*the over-simplified version

What do we do?

- Conduct scientific assessments to determine the condition of and threats to fish habitats
- Enable partners to complete on-the-ground habitat conservation projects
- Conduct education and outreach to improve understanding and spark action resulting in fish habitat conservation
- Provide a forum for those seeking inland lake fish habitat conservation to share strategies and resources

MGLP Lake Conservation Grant



Overall match ratio
8.66

Total projects
36

Lake Lizzie and Prairie lake fish passage (MN)



Lake Lizzie Dam, photo by Dan Zwilling, Minnesota DNR



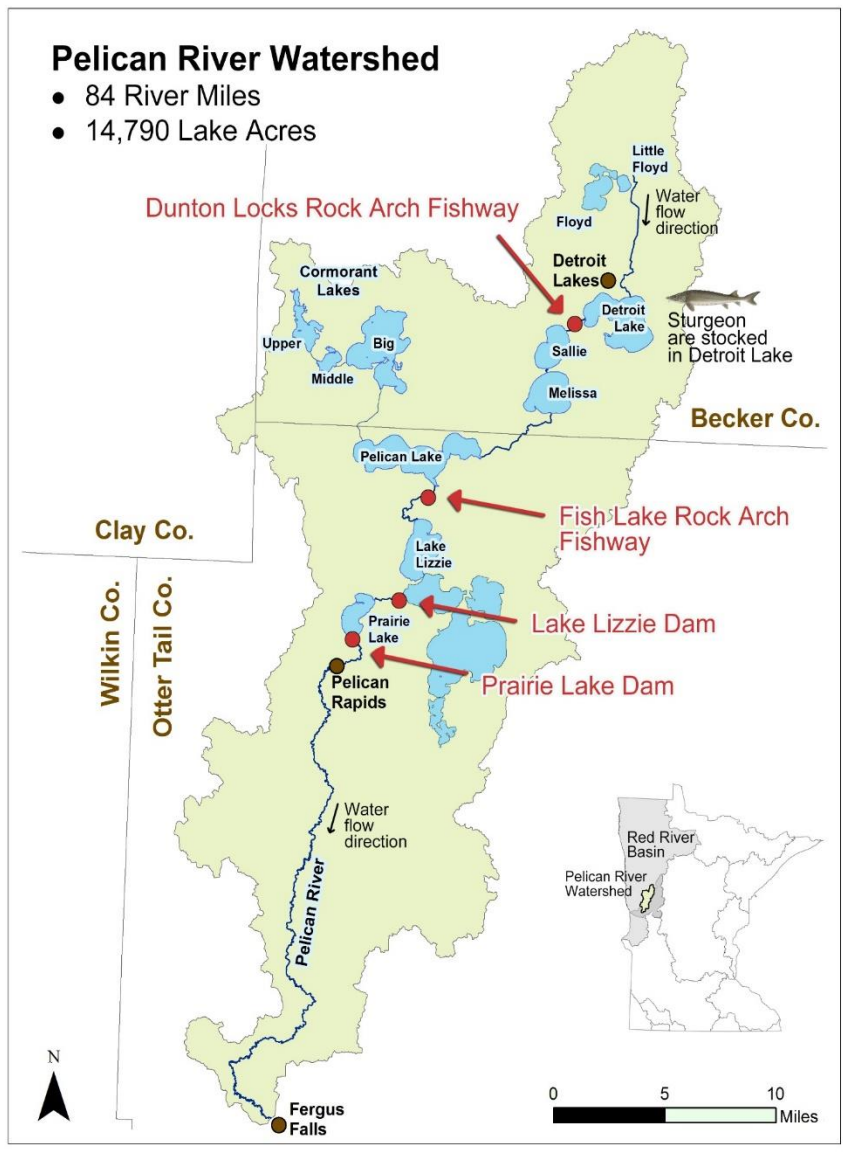
Prairie Lake Dam, photo by Joe Nohner, Michigan DNR

River miles restored
10

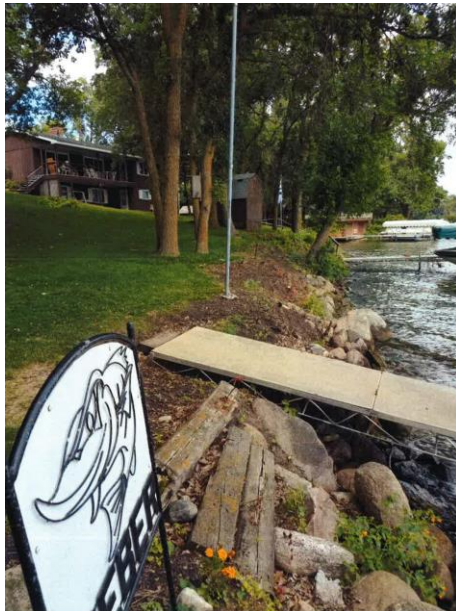
Lake acres reconnected
12,466

Species benefitted
Lake sturgeon, Walleye, numerous Catostomids

Partners
Pelican Lake Group of Lakes Improvement District, Minnesota DNR, MGLP



Pickerel Lake shoreline restoration (SD)



Example
rehabilitation
sites at
Pickerel Lake,
SD
Photo
credits: Rhett
Russell, South
Dakota DGFP

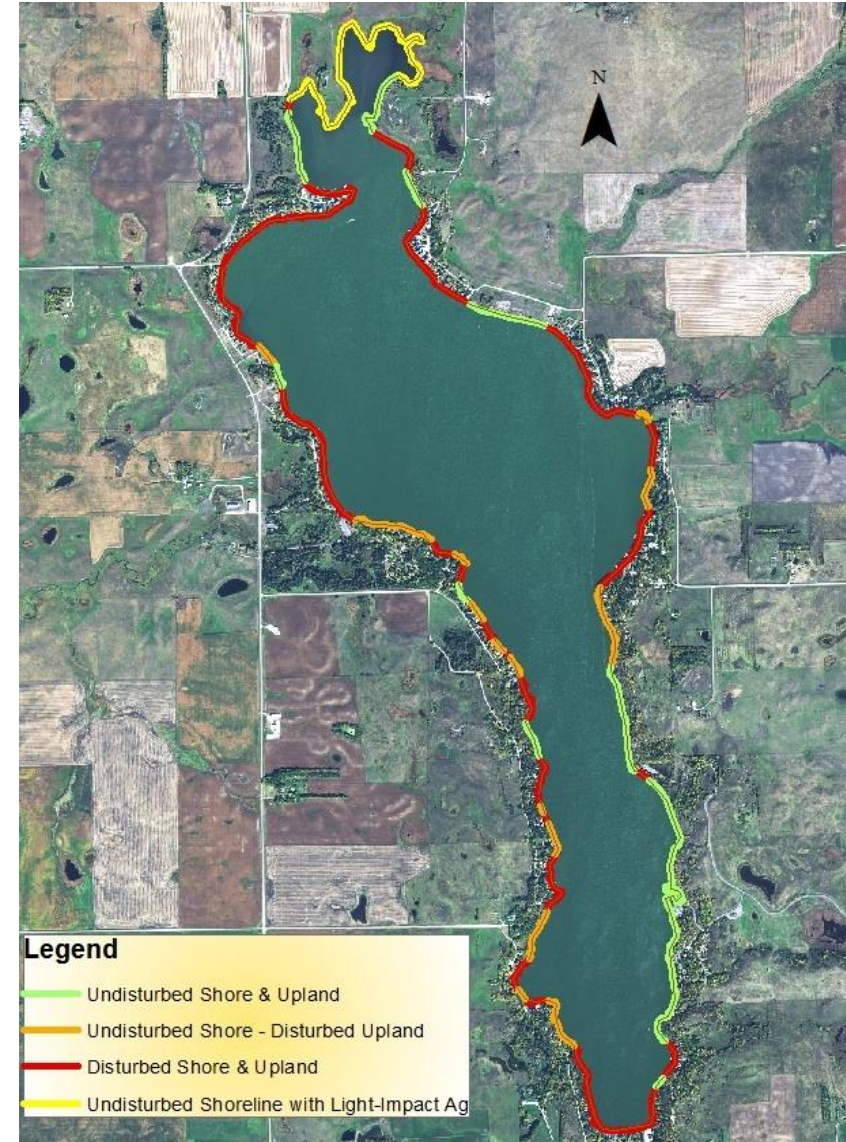
Miles of shoreline restored
0.3 (10% of the lake)

Properties restored
22

Shoreline erosion and
sediment reduction
25%

Species benefitted
**Smallmouth Bass, Black
Crappie, Bluegill, Walleye,
Yellow Perch,
Northern Pike, Black
Bullhead, and others**

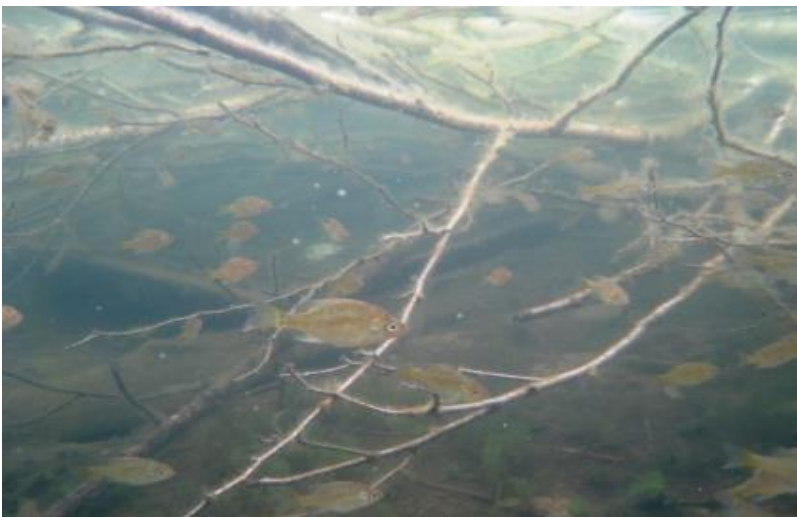
Partners
**South Dakota DGFP; Pickerel
Lake Conservancy**



Fish Sticks (WI)



Example fish sticks rehabilitation site. Photo credits: Greg Sass WI DNR (above) and WI DNR (below)



Downed trees installed
600

Lakes

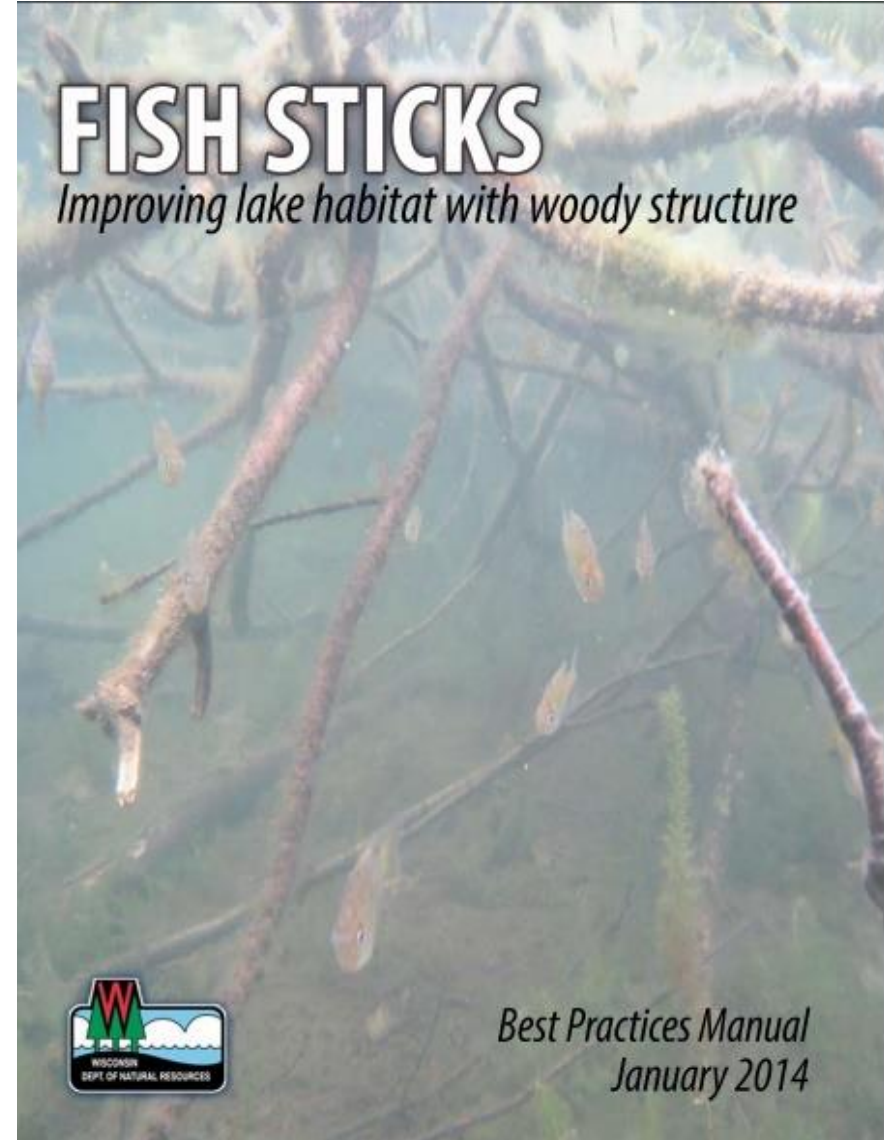
**5: Nelson, Upper St. Croix,
Lake Nebagamon, Middle Eau
Claire, Upper Eau Claire**

Species benefitted

**Largemouth Bass,
Smallmouth Bass,
Muskellunge, Northern Pike,
Yellow Perch, Bluegill, and
others**

Partners

**Wisconsin DNR, numerous
lake associations**



Fish Sticks (WI)



The screenshot shows the Healthy Lakes website. At the top left is the Healthy Lakes logo. The navigation menu includes: ABOUT, BEST PRACTICES (selected), GRANTS, RESULTS, RESOURCES, and a search icon. A dropdown menu under BEST PRACTICES lists: Choosing Best Practices, Fish Sticks, 350 ft2 Native Plantings, Diversion, Rock Infiltration, Rain Garden, and More. The main content area features a large image of a lake with a boat and the text: "FISH STICKS", "Create fish and wildlife habitat.", and "Fish Sticks are feeding, breeding, and nesting areas for a variety of fish to song birds. They can also prevent bank erosion – protecting lakeshore properties and your lake." Below this is a "LEARN MORE" button. The bottom section has two columns: "I own lakeshore property." with a photo of two women and a "Get Started" button, and "I'm an eligible grant applicant." with a photo of a man and a "Get Started" button.

Science and Data



Conservation Planner

MGLP Conservation Planner

Wau-Me-Cah Lake, MI

Lake symbols

Show which lakes?

Background map

Tools

Reset

Name: Wau-Me-Cah Lake
 Size: 105 acres
 County, state: Oakland, MI
 Watershed (HUC): Clinton (24090003)
 Database Id: Michn46522

Watershed disturbance

- High
- Medium
- Low

Summary | Watershed details | Shoreland details

Climate vulnerability

Medium
Vulnerability

Suitability

Bluegill	Likely	Likely
Northern pike	Unlikely	Unlikely
Walleye	Unlikely	Unlikely
Coldwater spp.	Unlikely	Unlikely

Watershed disturbance

47%

Watershed management guideline

25% 75%

Protection Rehabilitation & mitigation

Shoreland disturbance

34%

Shoreland management guideline

25% 75%

Protection Rehabilitation & mitigation

Themed issue in Lake and Reservoir Management

Adapting to climate change: Tools for managers of inland glacial lakes.

Tingley, Paukert, & Jacobson

Large Woody Debris and Fish Habitat Structure Additions: Picking the Right Lakes, Setting Expectations, and How to Best Implement.

Sass, Shaw, Rypel, Raabe, S. Toshner, & P. Toshner

Advancing aquatic vegetation management for fish.

Radomski

Climate change adaptation recommendations from the Wisconsin Inland Lakes Climate Change Workshop.

Magee, McIntyre, et al.

Evaluating a spatial decision support tool for lake conservation in the Midwest.

Tracy, Nohner, Infante, Wehrly, & Whelan

Using aquatic landscape ecology to inform lake habitat management at multiple scales.

Wehrly, Nohner, Breck, Cross, Jacobson, & Hansen

The influence of lake habitat and landscape context on bluegill growth and population size structure in Midwest glacial lakes.

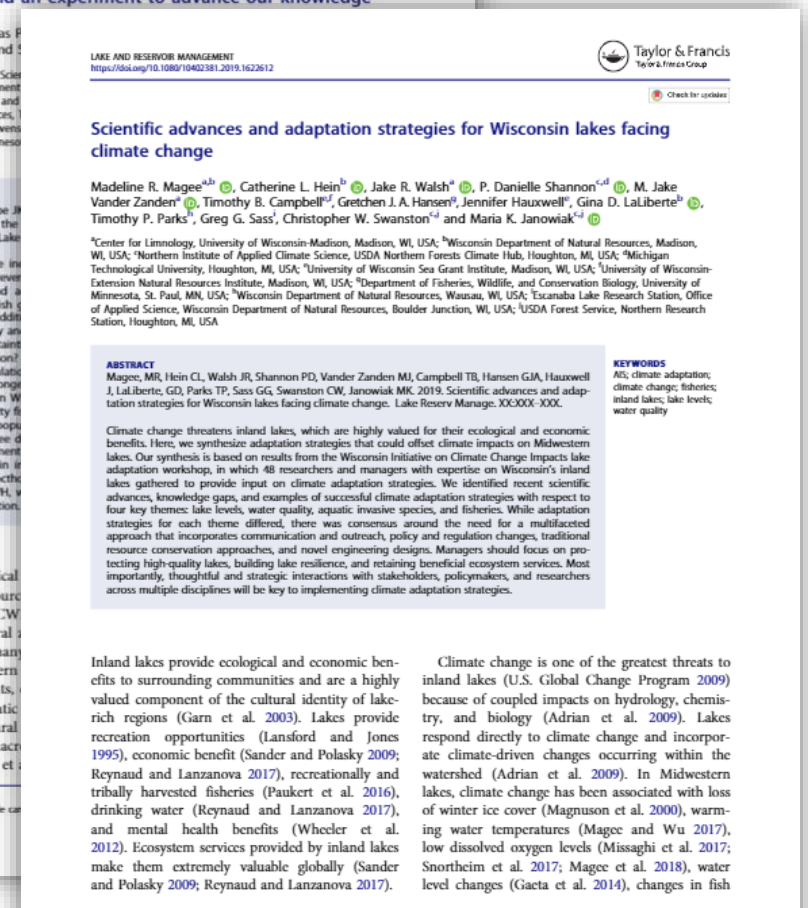
Breck & Wehrly

Walleye habitat: considerations for successful natural reproduction and stocking.

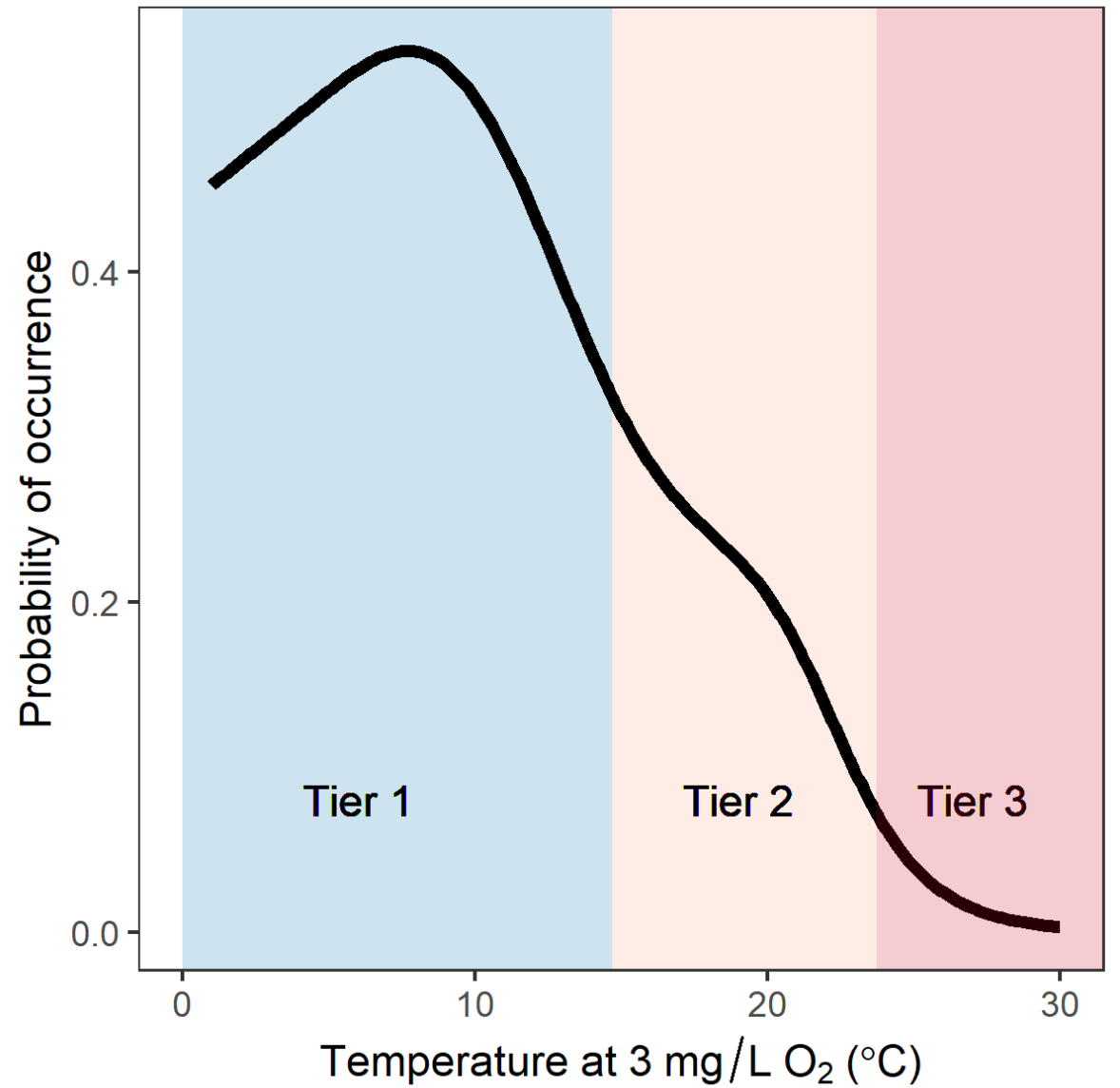
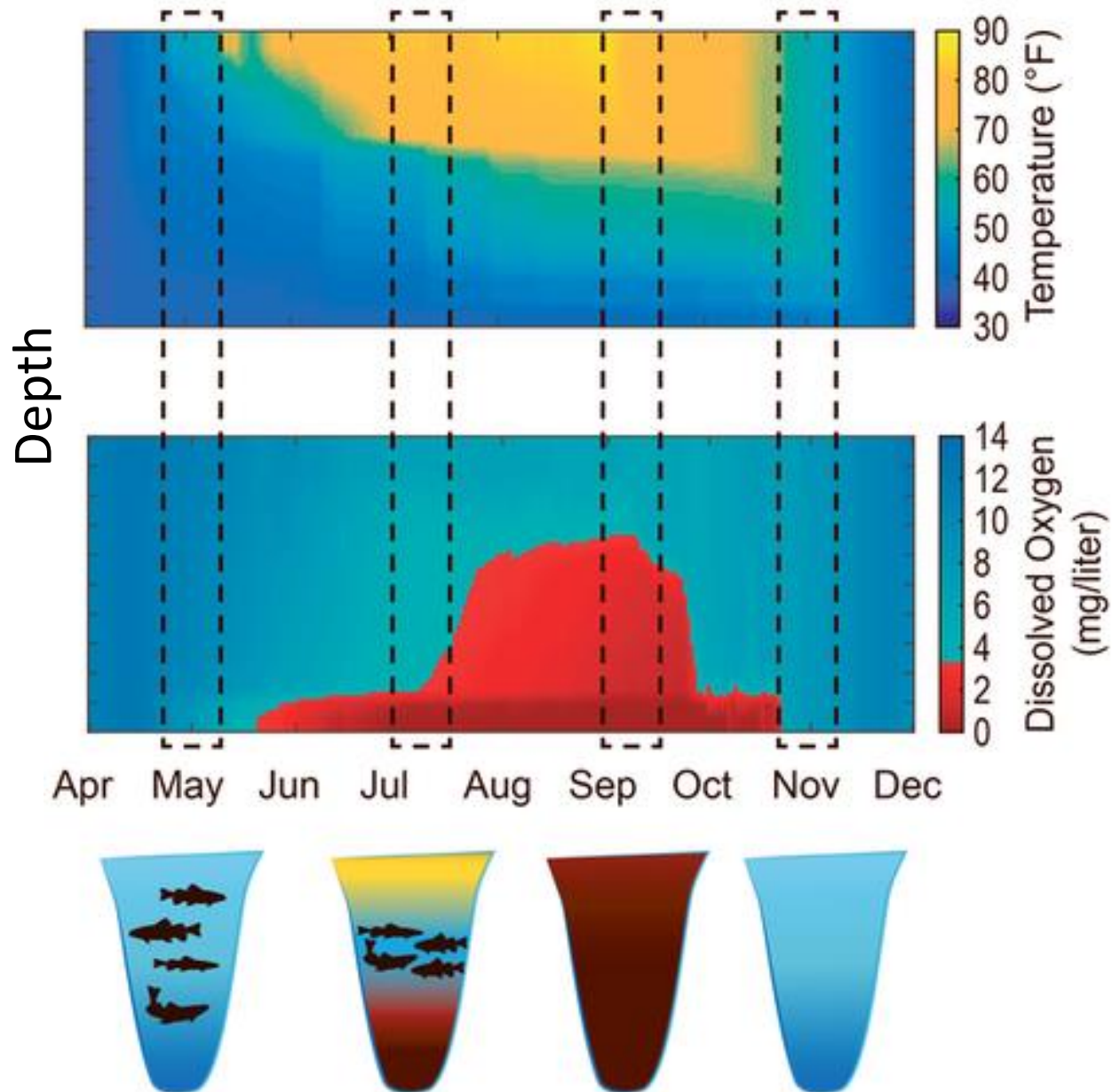
Raabe, VanDeHey, Zentner, & Cross

Wisconsin's Healthy Lakes Initiative: working with lakefront property owners to apply best management practices.

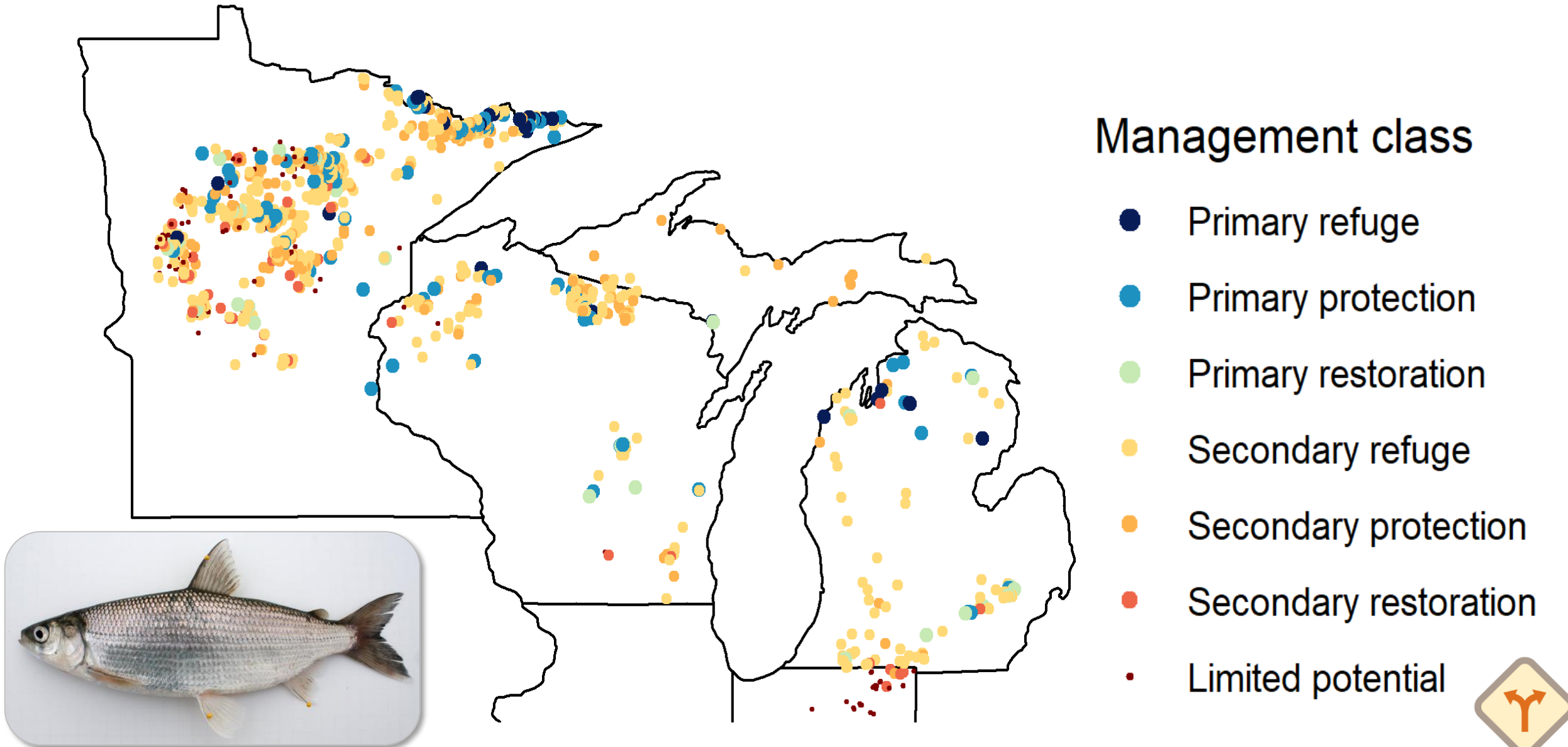
Goggin & P. Toshner



Science and Data: Cisco assessment



Outcome: Data to inform conservation strategies



Multistate conservation grant: Inland Lake Natural Shoreline Marketing Project

- Targets the cause of shoreline degradation
- Addresses social norms of shoreline beauty
- Asset for all MGLP partners
- 5 vignettes for publication



Source: Omaha Home Magazine



Outreach: Webinar series

- Purpose: Distribute research, innovative techniques, and lessons learned for other partner's benefit
- Pilot run: 6 webinars/year
- Audience:
 - Primary: Professionals in management, research, outreach, and conservation.
 - Secondary: Stakeholders



MIDWEST GLACIAL LAKES Partnership

Getting Started

- The webinar will take place from 2:00pm to 3:00pm Eastern Standard Time.
- Audio is through your computer speakers or headset: **You may not hear sound until webinar begins.**


Getting Started

- The webinar will take place from 2:00pm to 3:00pm Eastern Standard Time.
- Audio is through your computer speakers or headset: **You may not hear sound until webinar begins.**

Getting Started

- The webinar will take place from 2:00pm to 3:00pm Eastern Standard Time.
- Audio is through your computer speakers or headset: **You may not hear sound until webinar begins.**
- Use the **Audio Settings** option to do a sound check.
- During the webinar if you do not hear audio, make sure your sound is turned on, then contact the **Help Desk**.

How to Ask Questions

1. Click on the Q&A icon () to submit a question to the presenters.
2. Type your question in the box and click the Send button.

Send

Help Desk

Call the Distance Learning Help Desk (800) 500-1554 for technical support.

Michigan

Julia

Midwest Glacial Lakes Partnership 2020 Lake Conservation Grant

Joe Nohner




Outreach: Newsletter

- Newsletter distribution began in 2018
- 689 addresses
- ~31% open rates
- Sign up: midwestglaciallakes.org



Participate in the partnership

- Sign up for our emails – midwestglaciallakes.org
- Follow us on Twitter – @MGLFHP
- Reach out to Coordinator Joe Nohner to learn more
 - NohnerJ@Michigan.gov
 - 517-284-6236



MGLP
Organizational
Structure

