



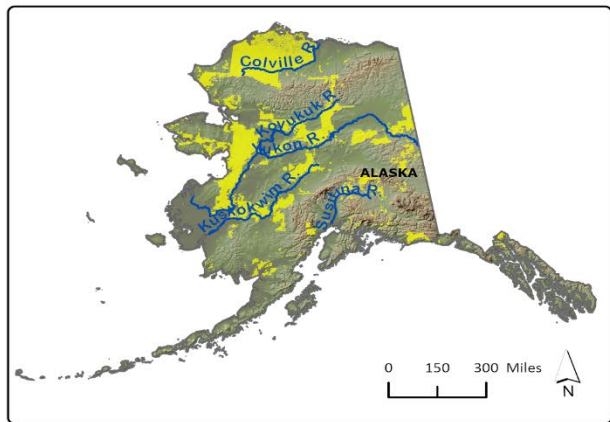
U.S. Department of the Interior
Bureau of Land Management

Aquatic Resources Program





U.S. Department of the Interior
Bureau of Land Management



-  States
-  BLM Lands
-  Major Lakes
-  Major Rivers



Source: BLM, Esri, USGS



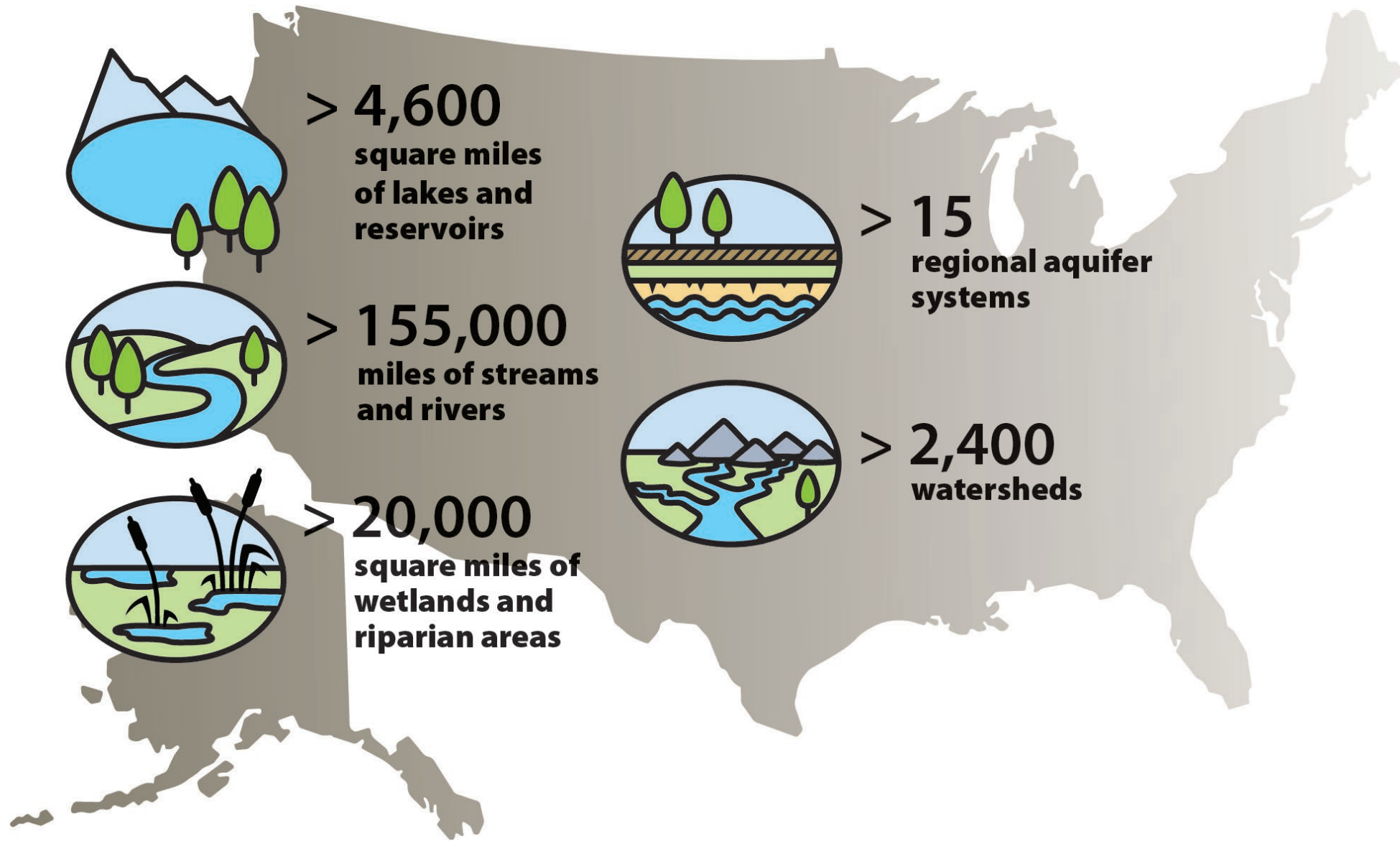
U.S. Department of the Interior
Bureau of Land Management

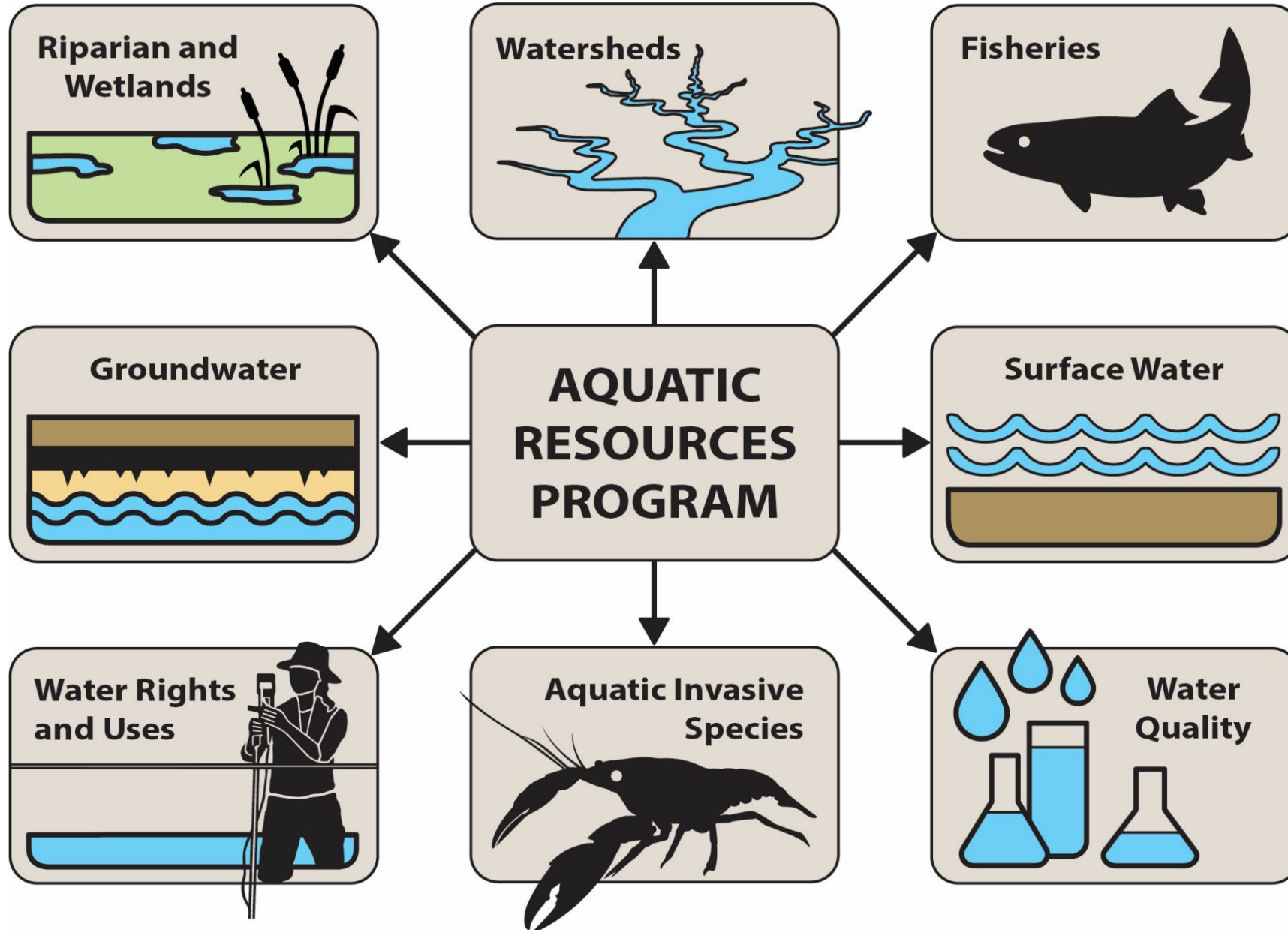
The Bureau of Land Management's mission is to sustain the health, diversity, and productivity of public lands for the use and enjoyment of present and future generations.





BLM-Managed Public Lands Include:







Aquatic Resources Program Headquarters



Program Lead
Scott Miller



Water Resource
Specialist
Paula Cutillo



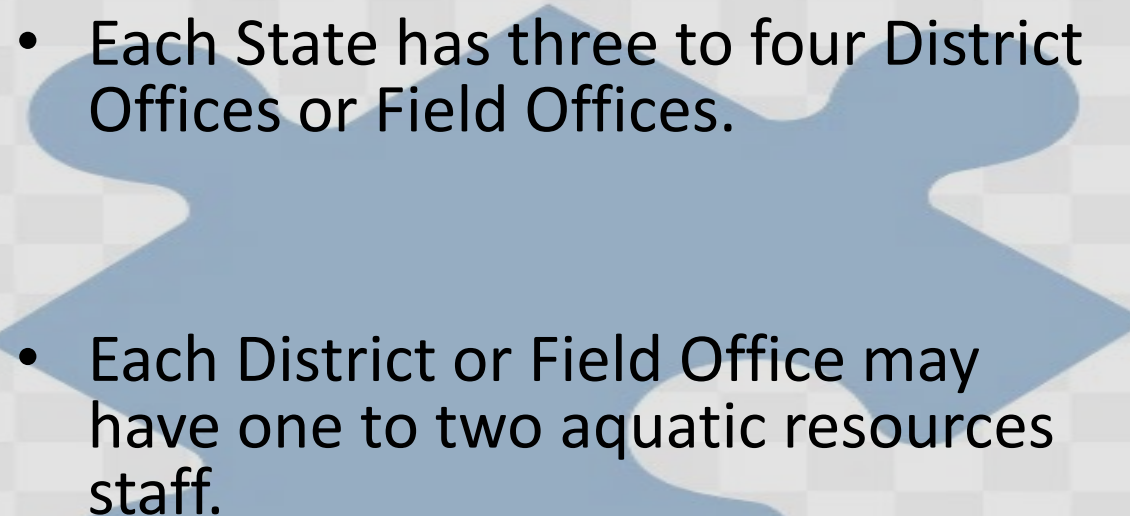
Fisheries
Specialist
Sharmila Jepsen



Riparian
Specialist
Melissa Dickard

BLM States

- 
- Alaska
 - Arizona
 - California
 - Colorado
 - Eastern States
 - Idaho
 - Montana-Dakotas
 - Nevada
 - New Mexico
 - Oregon-Washington
 - Utah
 - Wyoming

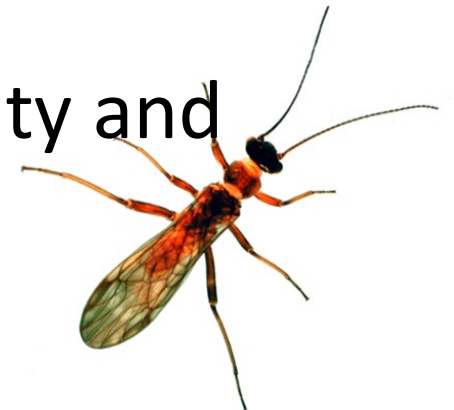
- 
- One to three aquatic resources staff in each State Office.
 - Each State has three to four District Offices or Field Offices.
 - Each District or Field Office may have one to two aquatic resources staff.



BLM 5-year Aquatic Resources Program Strategic Goals

January 2022

- Conserve, restore, and connect riparian, fisheries, and water resources
- Protect water supplies and uses
- Prevent the establishment and spread of aquatic invasive species
- Foster a watershed approach to improve water quality and habitat function





BLM strategic goals and NFHP Action Plan goals

NFHP Action Plan

- Protect and maintain intact healthy aquatic systems
- Prevent degradation of fish habitats
- Reverse declines in the quality and quantity of aquatic habitats
- Increase the quality and quantity of fish habitats that support a diversity of fishes/aquatic species

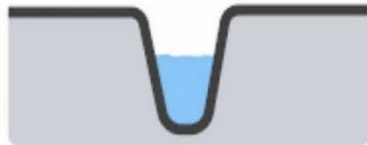




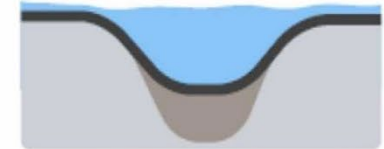
Restoration of Riverscapes

A stream comes back to life

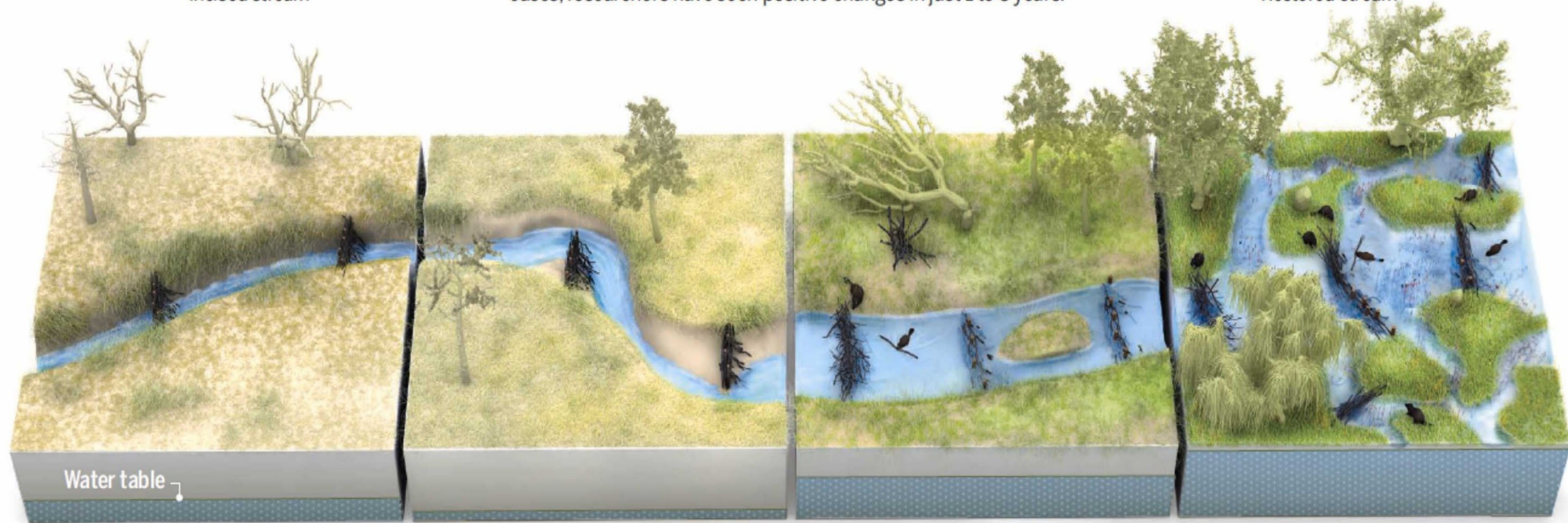
Across the U.S. West, scientists and land managers are using beaver dam analogs (BDAs) to heal damaged streams, re-establish beaver populations, and aid wildlife. In some cases, researchers have seen positive changes in just 1 to 3 years.



Incised stream



Restored stream



Water table

Adding dams

Widening the trench

Beavers return

A complex haven



Restoration of Riverscapes

Spatial Scale of Planning

Broad-scale management goals and objectives

Project scale

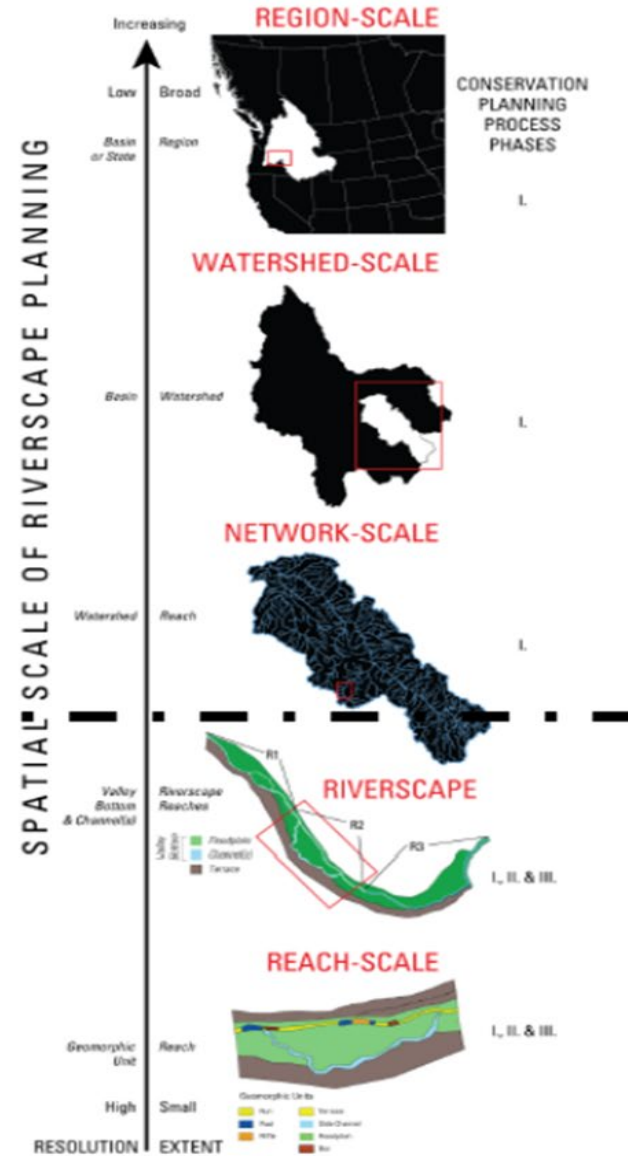


Figure 3.2 (pg. 90) from Bennett et al. (2019) – Chapter 3 LTPBR Manual
DOI: [10.13140/RG.2.2.15815.75680](https://doi.org/10.13140/RG.2.2.15815.75680)



Improve longitudinal connectivity.

Enabling fish migrations for access to diverse aquatic habitats and food.

- Ongoing inventories
- Appropriated funds
- Good neighbor authority
- States have IRA funding





U.S. Department of the Interior
Bureau of Land Management

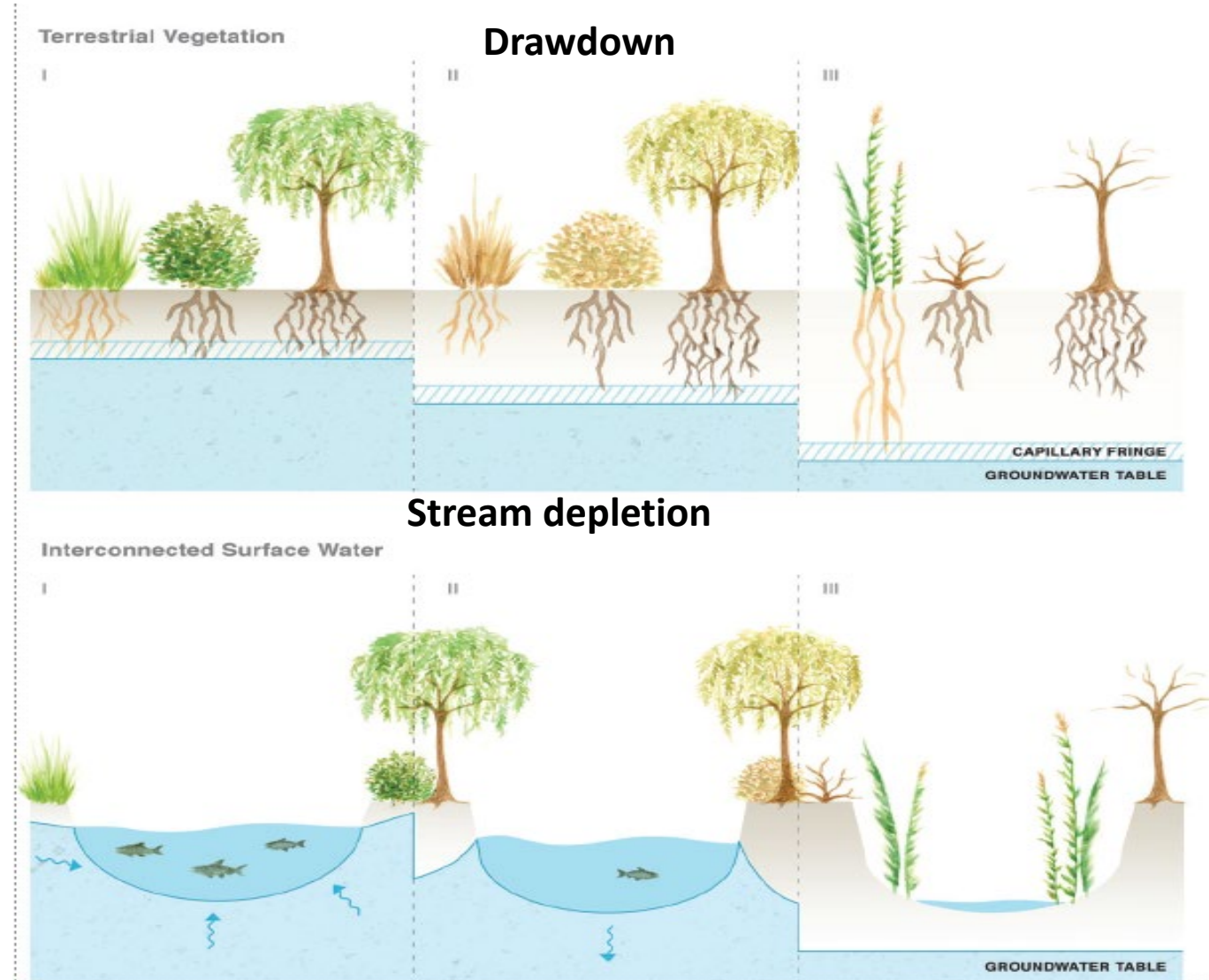
Department of Interior Interagency Fish Passage Task Force





Coordinate with States on water rights

- Collaborate with state agencies to acquire unappropriated water to maintain instream flows, groundwater levels, and drinking water supplies.
- Participate in State general stream adjudications.
- Comply with state water law for stream restoration projects.





Aquatic invasive species prevention and control

Watercraft inspection stations Lake Havasu

Many riparian areas in CO, UT and NM are infested with Tamarisk and Russian Olive

Outreach and Education

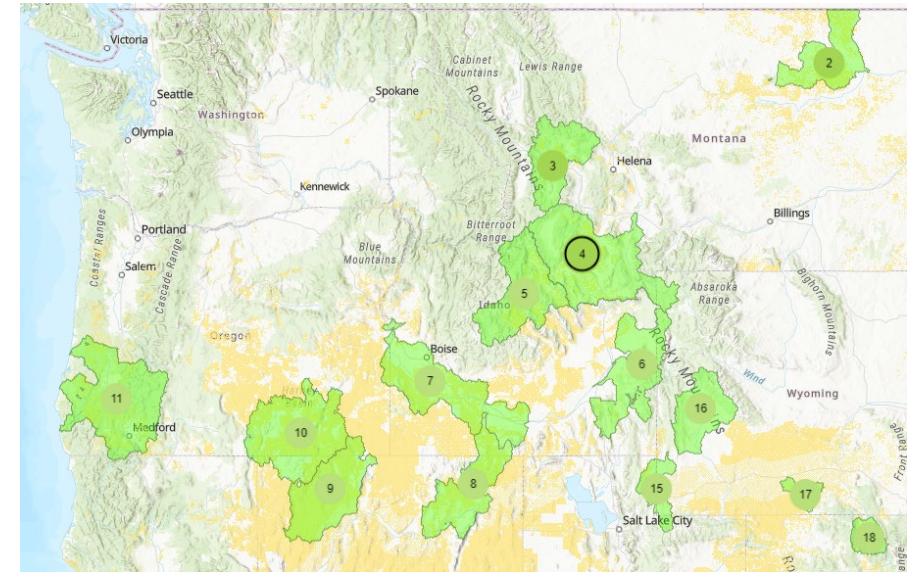


Improve watershed-based collaboration through priority landscape restoration

BLM has identified 21 Restoration Landscapes <https://www.blm.gov/restoration-landscapes>

Trout Unlimited and The Nature Conservancy agreement

The Foundation for America's Public Lands





Decision Support (NEPA)

- Develop a new BLM aquatic restoration categorical exclusion (CX)
- Adopt other agency CXs
- Programmatic Environmental Assessments





U.S. Department of the Interior
Bureau of Land Management

Recreational Access

Land and Water Conservation Fund

BLM received \$20,500,000 for Recreational Access in the FY2024 and FY2023 appropriations.

<https://www.blm.gov/programs/land-and-water-conservation-fund>





NFHP partnerships relevant to BLM lands



- Desert Fish Habitat
- Western Native Trout Initiative
- California Fish Habitat
- Pacific Lamprey Conservation Initiative
- Pacific Marine and Estuarine
- Mat-Su Basin Salmon
- Southwest Alaska Salmon
- Southeast Alaska Fish Habitat
- Reservoir Fish Habitat



Collaboration between BLM and NFHP

NFHP Science and Data Committee

Interagency Operating Plan

Multispecies assessments

Riverscape restoration trainings



U.S. Department of the Interior
Bureau of Land Management



Photo Credit: Kholood Eid, National Geographic



U.S. Department of the Interior
Bureau of Land Management



U.S. Department of the Interior
Bureau of Land Management



U.S. Department of the Interior
Bureau of Land Management



U.S. Department of the Interior
Bureau of Land Management