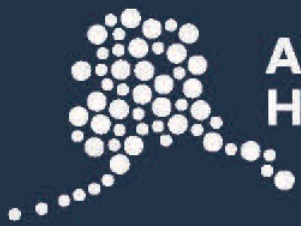


# The Alaska NFHP Story

A presentation to the  
National Fish Habitat  
Partnership Board

July 31, 2024

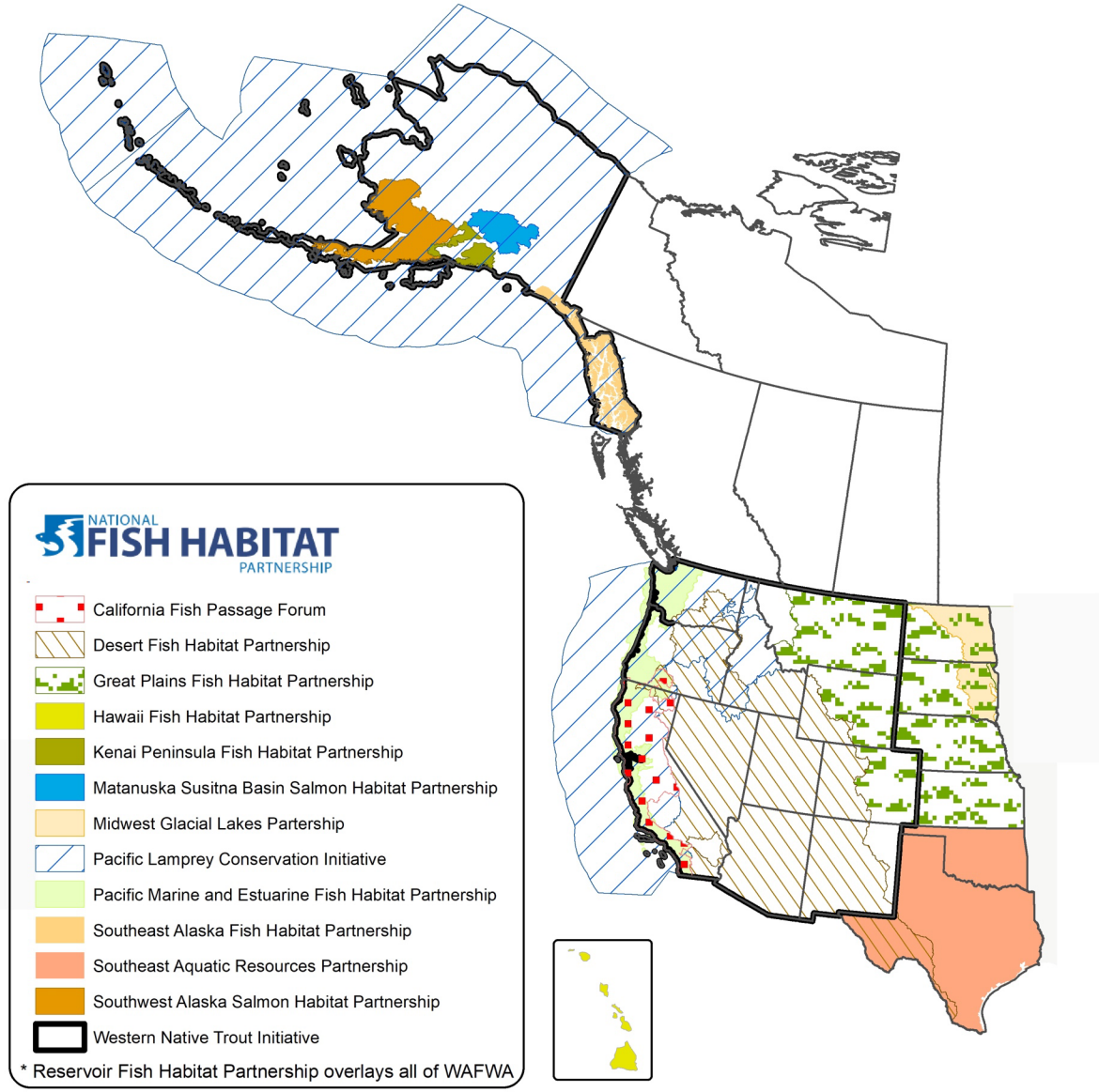
Anchorage, Alaska



Alaska Fish  
Habitat Partnerships



# WAFWA Fish Habitat Partnerships



**NATIONAL FISH HABITAT PARTNERSHIP**

- California Fish Passage Forum
- Desert Fish Habitat Partnership
- Great Plains Fish Habitat Partnership
- Hawaii Fish Habitat Partnership
- Kenai Peninsula Fish Habitat Partnership
- Matanuska Susitna Basin Salmon Habitat Partnership
- Midwest Glacial Lakes Partnership
- Pacific Lamprey Conservation Initiative
- Pacific Marine and Estuarine Fish Habitat Partnership
- Southeast Alaska Fish Habitat Partnership
- Southeast Aquatic Resources Partnership
- Southwest Alaska Salmon Habitat Partnership
- Western Native Trout Initiative

\* Reservoir Fish Habitat Partnership overlays all of WAFWA

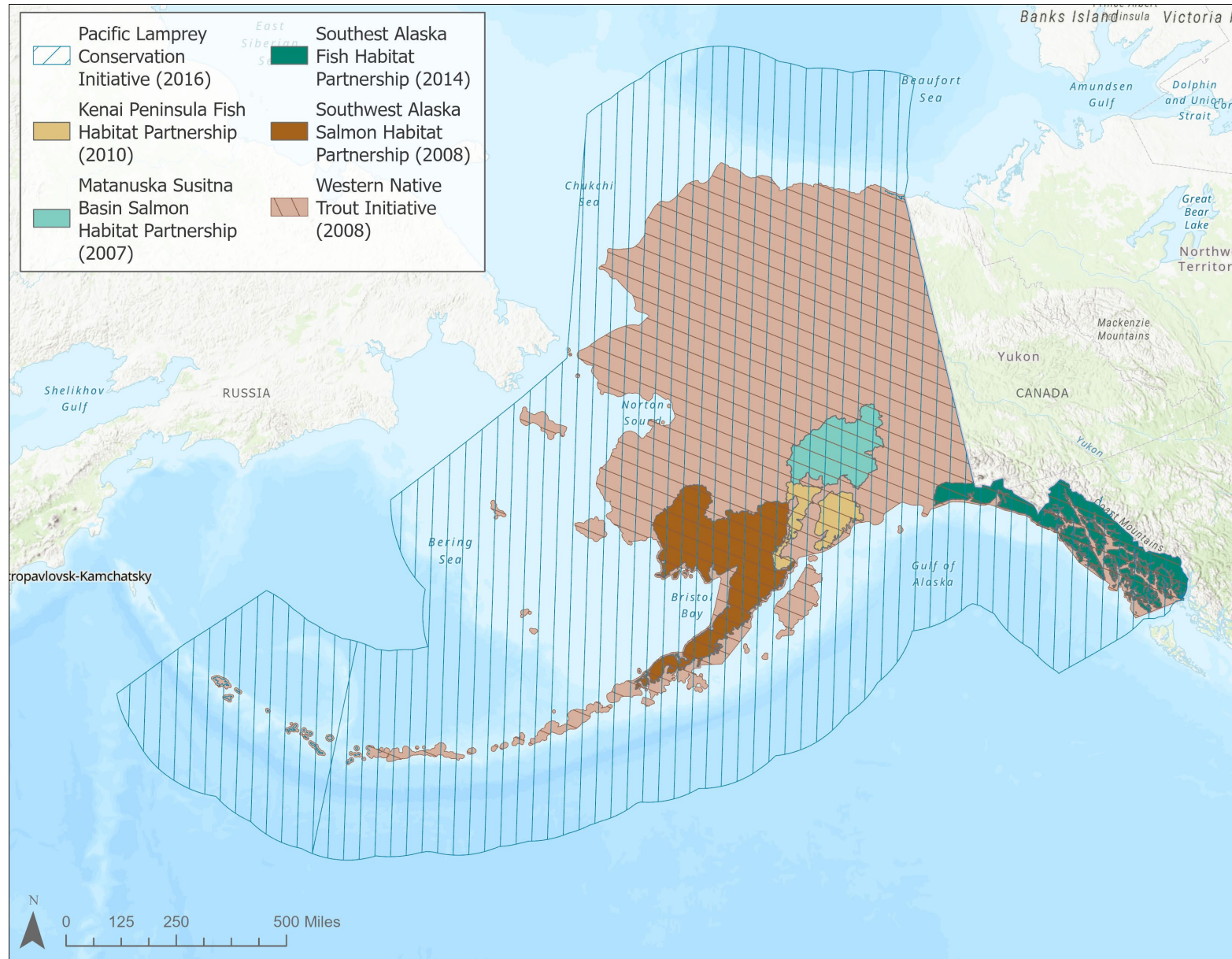


Hawaii insert not to scale

Preliminary Draft 7/7/2022



# MAP of Alaska FHPs



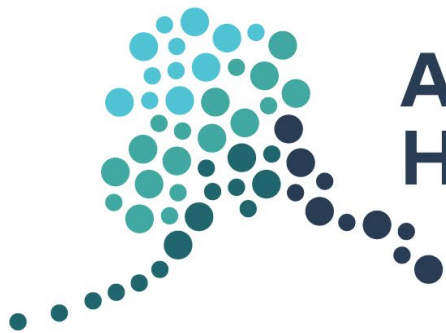
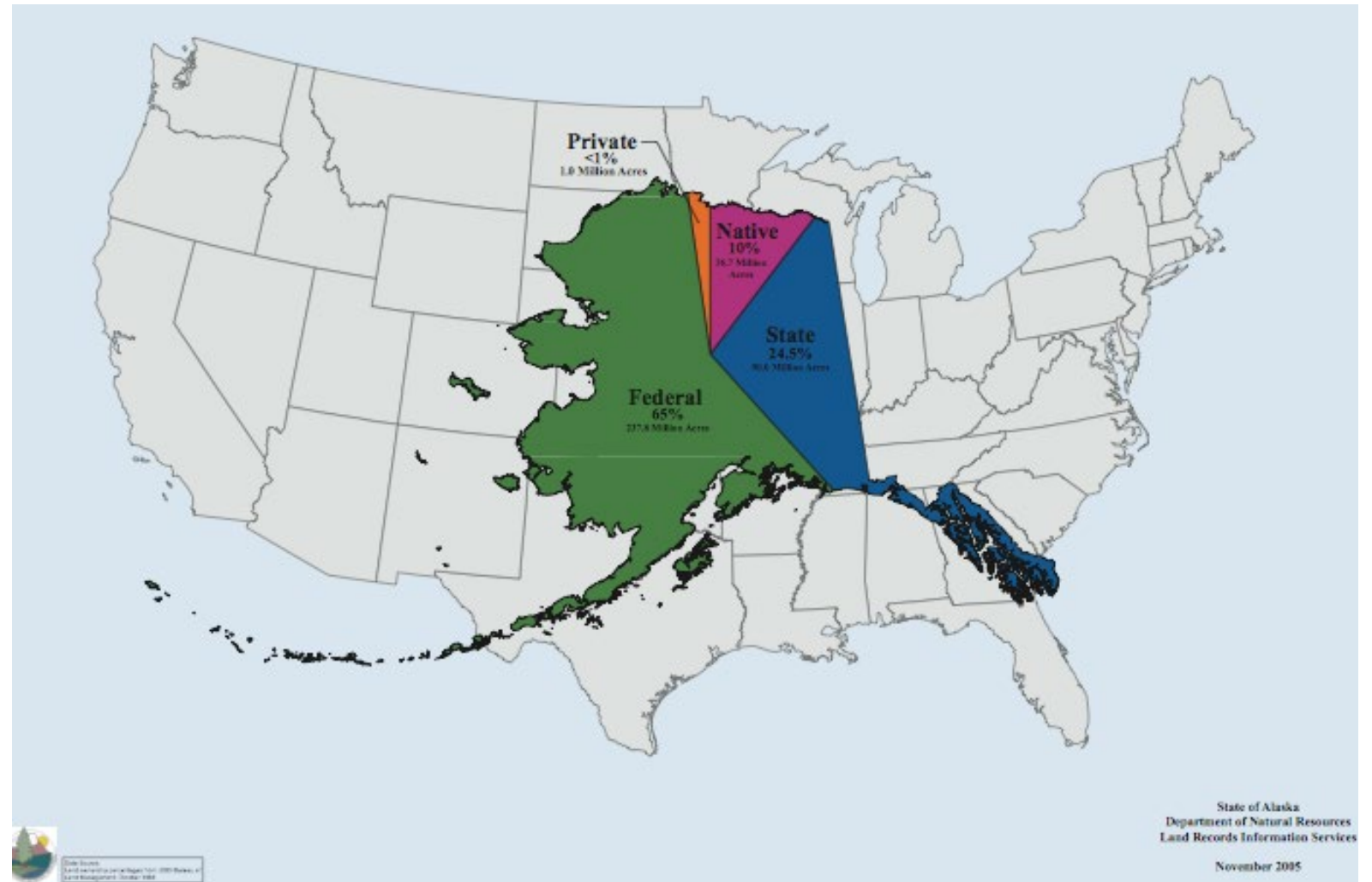
# History of NFHP in Alaska

- NFHP Inception (2001); SWAKSHP initially formed as a coalition in 2001 (later evolved into existing Partnership), Board Recognized 2008, first Strategic Plan in 2011; MSBSHP formed 2005, Board recognized 2007, first Strategic Plan in 2008; KFHP formed ???, Board Recognized 2010, first Strategic Plan ???; SEAKFHP formed 2010, Board Recognized 2014, first Strategic Plan 2014, updated with two conservations strategies in 2016; WNTI formed 2006, Board Recognized 2008, first Strategic Plan 2008; PLCI formed 2008, Board Recognized 2016, first Strategic Plan 2015

Partnership	Year Formed	Board Recognized	Strategic Plan
Southwest AK	2001	2008	2011
Matanuska Susitna Basin	2005	2007	2008
Western Native Trout	2006	2008	2008
Kenai Peninsula	2007	2010	2012
Southeast AK	2010	2014	2017
Pacific Lamprey	2008	2016	2015



# Alaska Context



## Alaska Fish Habitat Partnerships

# Significance of Alaska Salmon



- Cultural, social benefits
- 11M pounds for subsistence
- Sportfishing: \$1.4B, 16,000 jobs
- Commercial harvest: 200M salmon, ~\$750M paid to fishers
- Tourism: 2.24M visitors, 43,000 jobs, \$4.5B economic impact

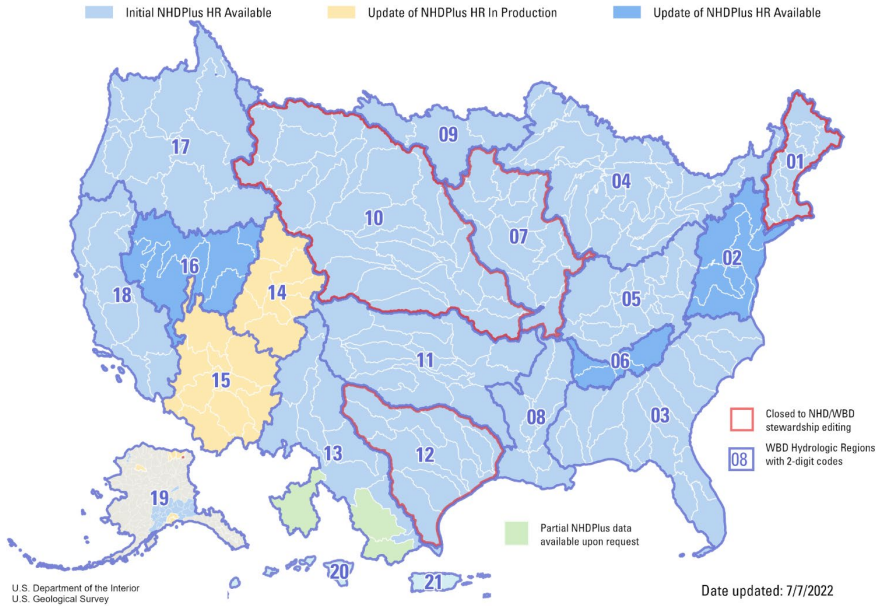


# Alaska – Data Poor

## Alaska NWI Status

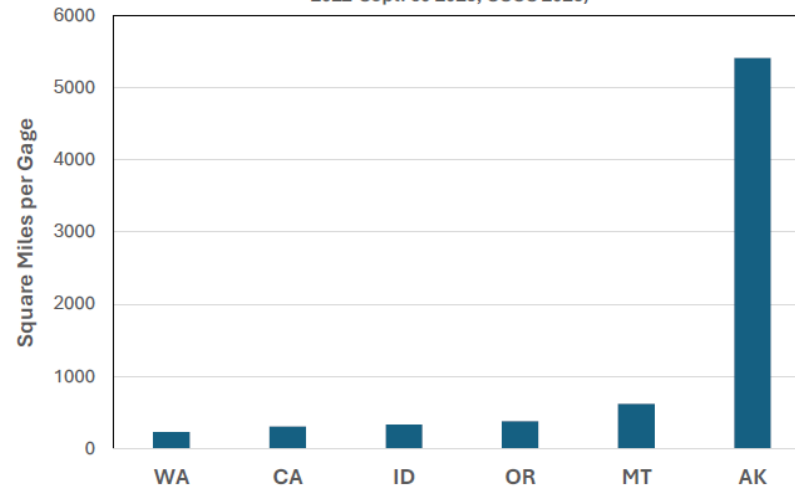
### Alaska NHD Status

#### NHDPlus High Resolution Availability

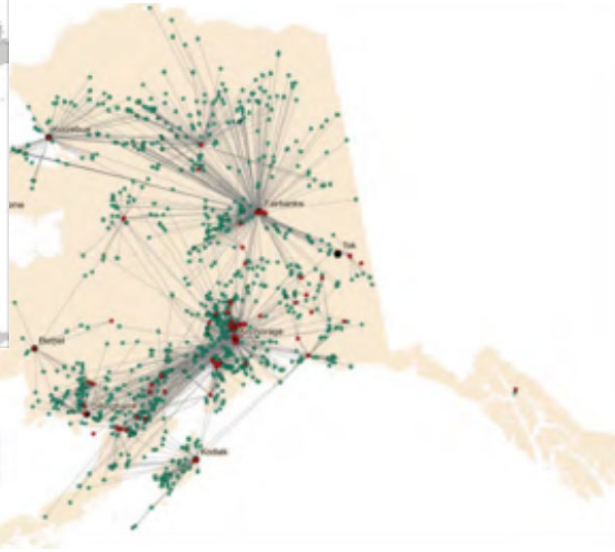
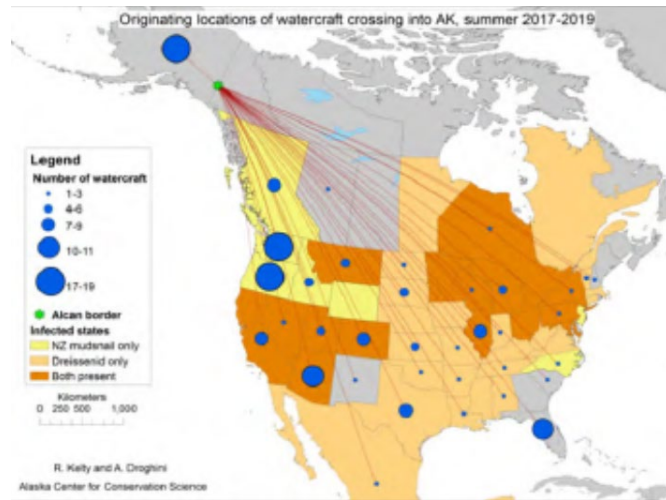
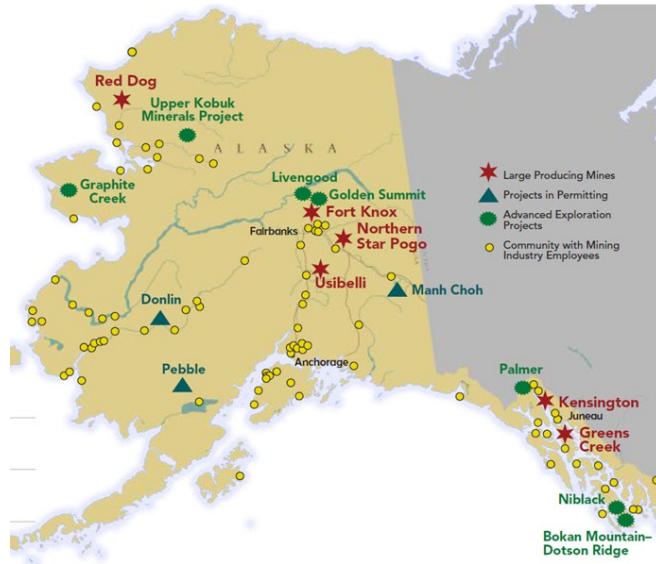
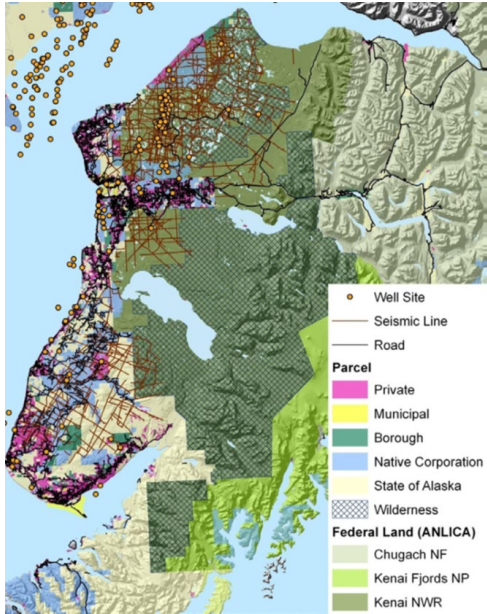


### USGS Surface Water Gages

SQUARE MILES PER USGS GAGING STATION BY STATE (Oct. 1, 2022-Sept. 30 2023, USGS 2023)



# Alaska is Pristine...Right?





Alaska remains the last place on earth to get it right the first time.

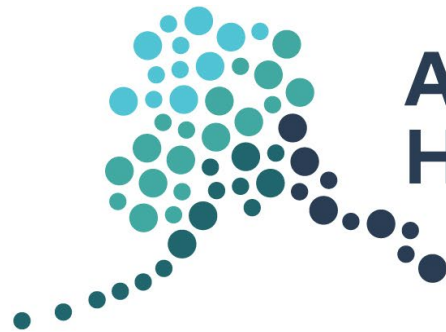


# Proactive Conservation



**Alaska Fish  
Habitat Partnerships**

# Common Themes Across Alaska FHPs



**Alaska Fish  
Habitat Partnerships**

# Alaska FHP Coordination Examples

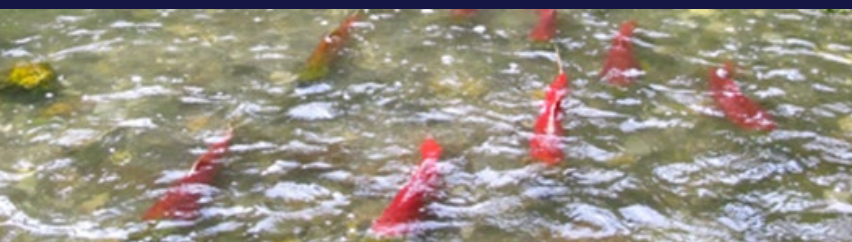
- 1-2 meetings annually of Alaska FHP coordinators and supporting Agency staff (USFWS, NOAA, USFS, ADF&G)
- Routinely discuss and implement shared needs (e.g., communication/outreach; training needs; Admin support)
- Participation in collaborative conference symposia (Alaska Chapters of AFS, AWRA and via FHP regional symposiums)
- 2021 Multi-State grant to develop collaborative communication templates, shared logo, website: [alaskafishhabitat.org](https://alaskafishhabitat.org) and outreach materials

**Partnering on**  
**behalf of Alaska's**  
**wild, native fish and**  
**their habitats.**





Together the  
Matanuska & Susitna River  
watersheds total 24,500 square  
miles



### Steering Committee:

1. Emily Mailman (National Oceanic and Atmospheric Administration)
2. Theo Garcia (Knik Tribe)
3. Marc Lamoreaux (Native Village of Eklutna)
4. Trent Liebich (U.S. Fish and Wildlife Service)
5. Michael Mazzacavallo (Alaska Department of Fish and Game)
6. Aaron Prussian (Trout Unlimited)
7. Laurie Stuart (Tyonek Tribal Conservation District)
8. Matthew Varner (Bureau of Land Management)
9. Gabe Kitter (Mat-Su Borough Fish and Wildlife Commission)
10. At-large seat 3 (Vacant)

### Science and Data Committee:

1. Carrie Anne Brophil (Native Village of Eklutna)
2. Thomas Capiello (Retired, Alaska Department of Fish and Game)
3. Nick DeCovich (Alaska Department of Fish and Game)
4. Mike Campfield (Mat-Su Borough)
5. John Reed (U.S. Geological Survey)
6. Ashley Oleksiak (Alaska Department of Environmental Conservation)
7. Sue Mauger (Cook Inletkeeper)
8. Anjanette Steer (University of Alaska Anchorage)

### 2024 Mat-Su Salmon Symposium Planning Committee:

1. Libby Kugel (Great Land Trust)
2. Theo Garcia (Knik Tribe)
3. Erin Larson (UAA Center for Conservation Science)
4. Ashley Oleksiak (Alaska Department of Environmental Conservation)
5. Mike Campfield (Mat-Su Borough)
6. Nathan Cathcart (Alaska Department of Fish and Game)
7. Jessica Speed (Partnership Coordinator, Trout Unlimited)

### Outreach Committee:

1. Chennery Fife (Trout Unlimited)
2. Theo Garcia (Knik Tribe)
3. Jessica Speed (Partnership Coordinator, Trout Unlimited)
4. Emily Mailman (National Oceanic and Atmospheric Administration)



# Primary Potential Threats and Strategies to Address Them

Conservation Strategies	
1	Overarching Science Strategies
2	Alteration of Riparian Areas
3	Climate Change
4	Culverts that Block Fish Passage
5	Filling of Wetlands
6	Impervious Surfaces & Stormwater Pollution
7	Aquatic Invasive Species
8	Large-scale Resource Development
9	Loss or Alteration of Water Flow or Volume
10	Loss of Estuaries & Nearshore Habitats
11	Motorized Off-road Recreation
12	Wastewater Management

Points	Priority	Objectives that Address: <small>*Find more detail in the Partnership's 2019 Addendum to the Strategic Action Plan, pg. 6</small>
20	High	CS1. Overarching Applied Science Strategies Obj. 1.1 – Anadromous Waters Catalogue Obj. 1.3 – Surface and Groundwater Studies CS2. Alteration of Riparian Areas CS5. Filling of Wetlands CS7. Aquatic Invasive Species CS9. Loss or Alteration of Water Flow or Volume

**Conserving Salmon Habitat in the Mat-Su Basin:  
Organizational Focus  
and Updated Conservation Strategies  
of the  
Mat-Su Basin Salmon Habitat Partnership**

---

**Addendum to the 2013 Partnership Strategic Action Plan - June 2019**

\*Organizational Priorities Updated June 2021

# NFHP Funding Support

\$4.8 million  
NFHP Funding

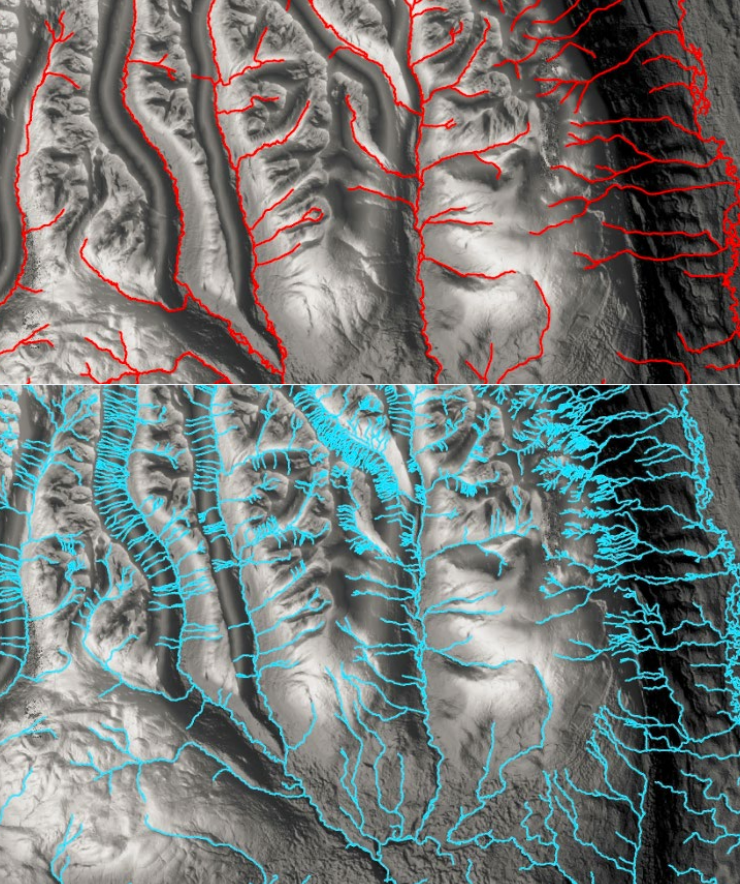
+

Over \$16 million  
other project  
contributions

- Science (46 projects)
- Restoration (35)
- Conservation (22)
- Coordination & education (21)

# Partnership Progress

---



- Mapped streams to national standards
- Improvements in knowledge of salmon distribution and habitat use
- Growing understanding of thermal needs of salmon life stages, ability to model changing temperatures and identification of cold water refugia
- Assessments have informed plans and policies that help protect salmon habitat (MSB wetlands and stormwater management plans).

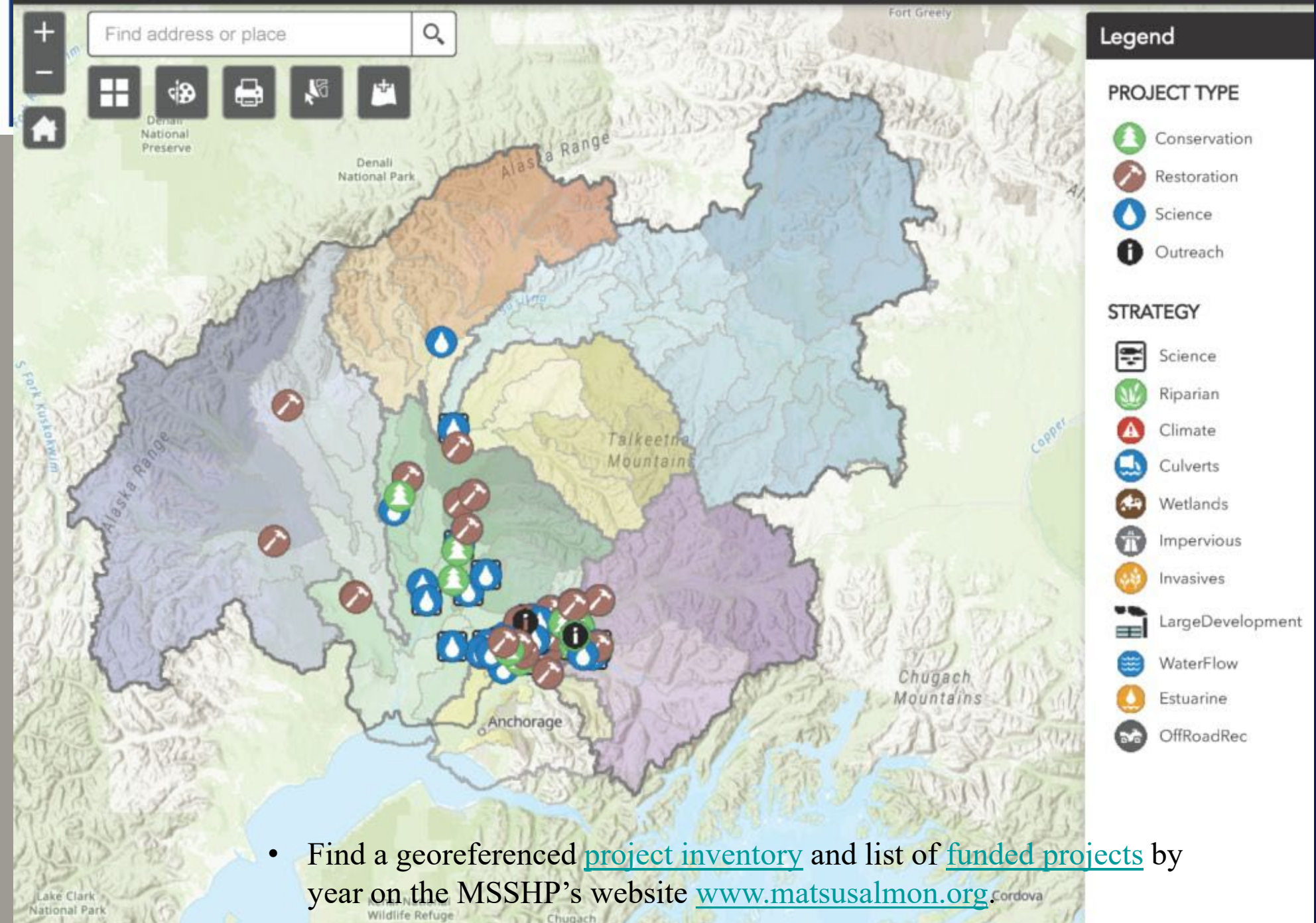




## Partnership Progress



- More than 145 of the over 400 estimated partial or complete barriers to juvenile and adult salmon movement at road/stream crossings in the Mat-Su Borough have been restored since 2005.
- In 2013, Mat-Su Borough adopted fish friendly design standards on Borough roads.
- Tribal and other regional partner success in acquiring BIL funding



- Find a georeferenced [project inventory](#) and list of [funded projects](#) by year on the MSSHP's website [www.matsusalmon.org](http://www.matsusalmon.org).



Looking Forward

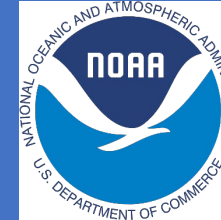
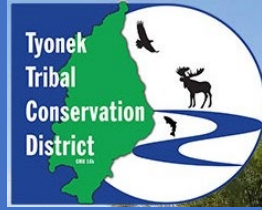
*“From an economic perspective, wild salmon may be the world’s most perfect business model: Nature provides the necessary infrastructure, we invest nothing in the wild production system, and every year we harvest an enormously valuable resource.”*

**–Richard Nelson, Mat-Su Salmon Symposium 2015**

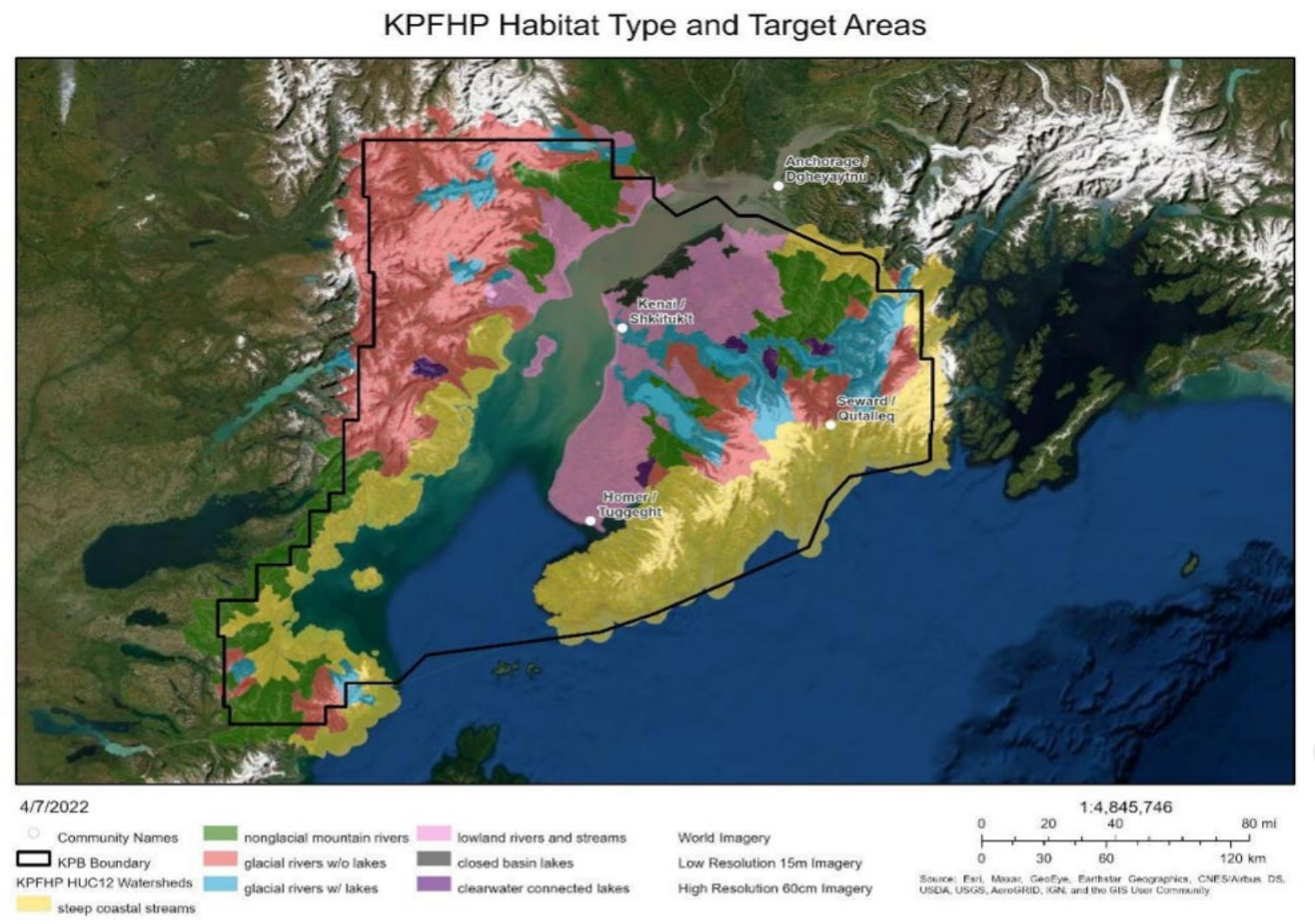
# KENAI PENINSULA FISH HABITAT PARTNERSHIP OVERVIEW



# 34 Regional Partners



# FRESHWATER CONSERVATION ACTION PLAN (2022)



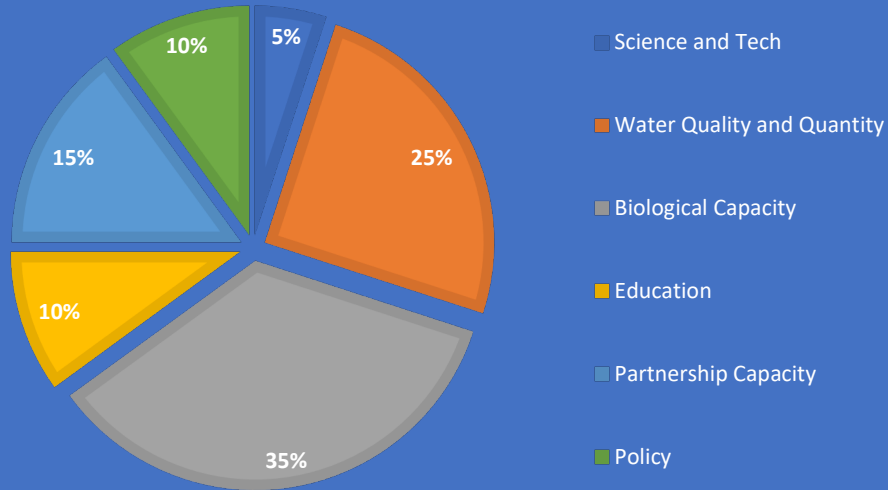
# FRESHWATER THREATS

- 1) Aquatic invasive species
- 2) Warming thermal regime
- 3) Incompatible commercial and residential development
- 4) Incompatible road development
- 5) Barriers to fish passage
- 6) Incompatible mining
- 7) Catastrophic spills
- 8) In-stream sedimentation

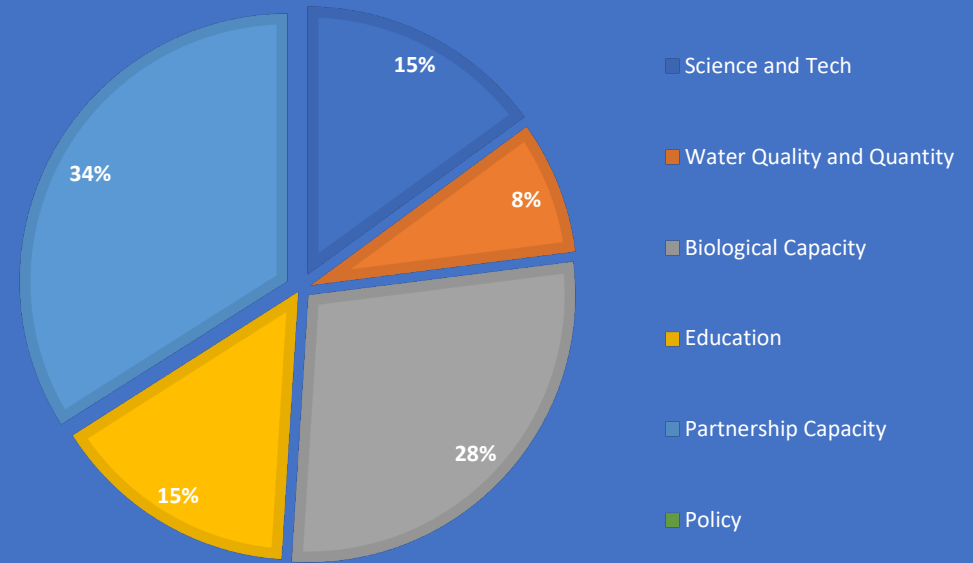


# KPFHP FUNDED PROJECTS

## FOCAL AREA FUNDING - STRATEGIC PLAN



## FUNDING BY FOCAL AREA (2010-2022)



• \$1.8 mil NFHP funds & \$2.7 mil matching funds







# 2022 ACCOMPLISHMENTS



## Education and Outreach:

- Provided lessons to 1,766 students through Adopt-a-Stream
- Stream watch volunteers made over 3,000 public contacts at high use fishing sites
- Educated 500 students about aquatic invasive species at the Salmon Celebration

## Science

- Updated Freshwater CAP inc. climate change supplement
- SMU impervious surfaces GIS modeling
- Elodea surveys
- AIS survey map

## Conservation

- 12 applications for instream flow reservations. Would protect 70 miles of habitat.
- SW: installed 3+ miles of riparian fencing, removed 2,600 lbs of litter from riparian areas
- Invasive species removal



# SOUTHEAST ALASKA FISH HABITAT PARTNERSHIP

- Southeast Alaska and the value of SEAKFHP
  - SE is comprised of 34 geographically isolated communities
  - Salmon continue to be major cultural and economic drivers to the region
  - We are home to the Tongass National Forest
  - Legacy logging and other development has created habitat impacts
  - SEAKFHP provides the forum for partners to come together to work collaboratively to project and restore the regions aquatic habitats





# SOUTHEAST ALASKA FISH HABITAT PARTNERSHIP

## • Key Partnership Functions and Members

- Foster partner relations, information sharing and habitat focused project collaboration
- Support data sharing and long-term resource archives
- SEAKFHP List Serve is over 250 members strong
- SEAKFHP project partners include over 40 partner organizations
- SEAKFHP is supported by a 13 member Steering Committee

“many hands make light work”



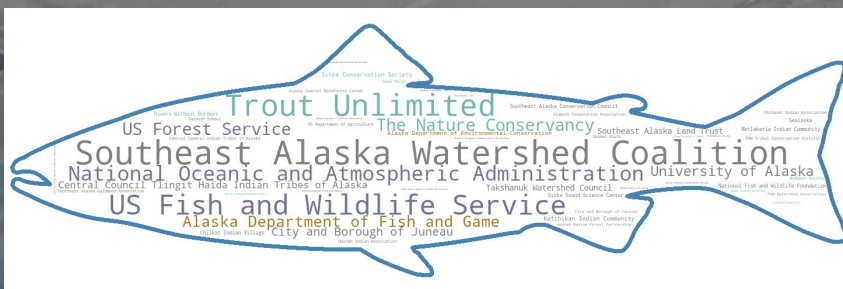


# SOUTHEAST ALASKA FISH HABITAT PARTNERSHIP

- SEAKFHP's NFHP Successes:

- 18 NFHP projects funded FY22-24
- 7 NFHP projects proposed for FY25

- Our NFHP project match comes from these key partners:



**51 FISH HABITAT PARTNERSHIP** National Fish Habitat Partnership Accomplishments For internal use only

Filters	Total Projects	NFHP Investment	Federal Leveraged	Non Federal Match
FHP Southeast Alaska Fish Habitat Partn...	8	\$512.6k	\$115k	\$368k
FY Proposed None	0			
FY Funded 2023	7	Total Leveraged Funds \$663k	Other Leveraged Funds \$180k	Non-Federal Match Ratio 0.72
<input type="checkbox"/> 2019 <input type="checkbox"/> 2020 <input type="checkbox"/> 2021 <input type="checkbox"/> 2022 <input checked="" type="checkbox"/> 2023 <input type="checkbox"/> 2024				

Reset Select all

Esri, GEBCO, Garmin | Esri, TomTom, FAO, NOAA, USGS, NRCAN  
Powered by Esri



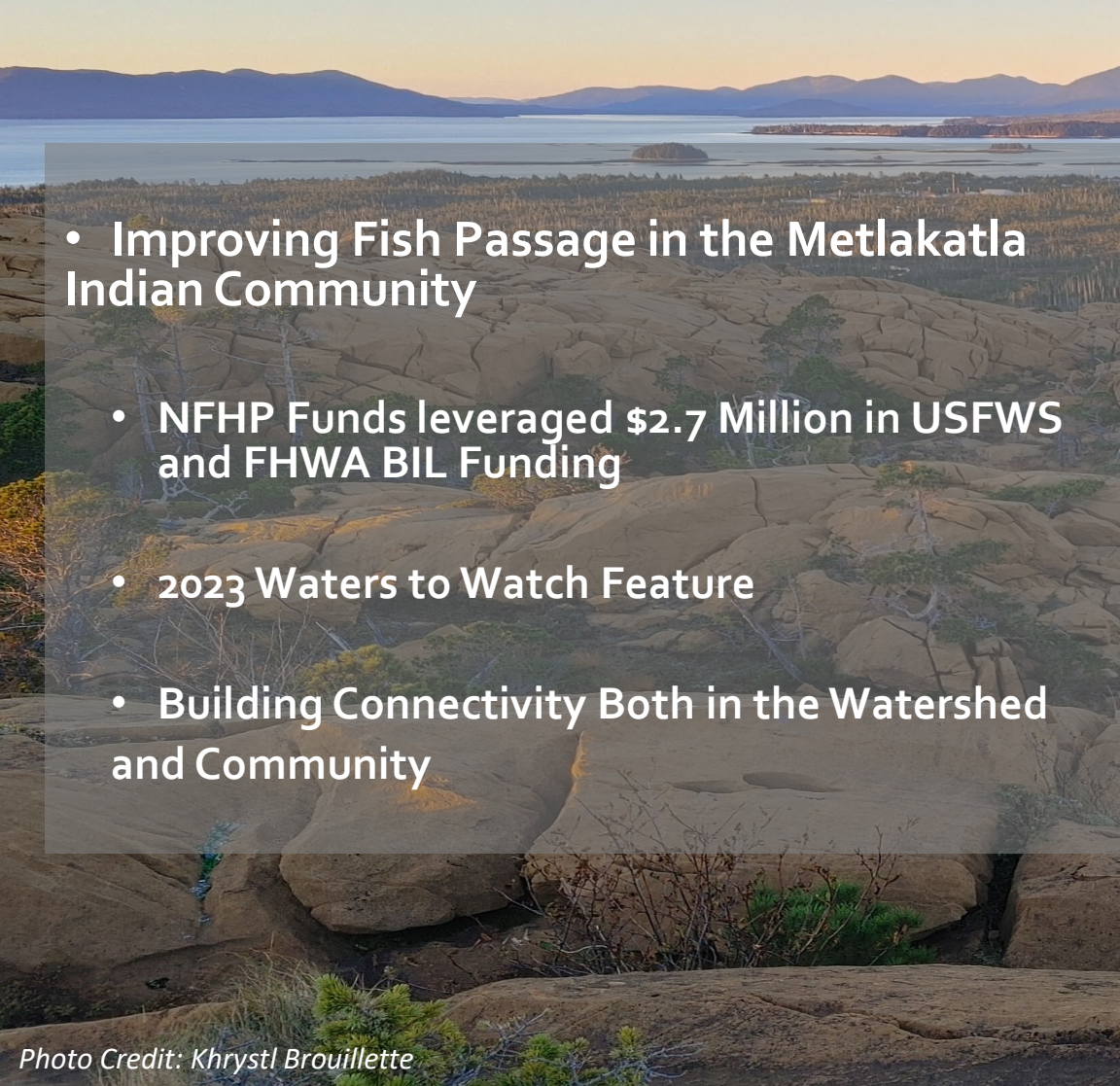
# SOUTHEAST ALASKA FISH HABITAT PARTNERSHIP

- Improving Fish Passage in the Metlakatla Indian Community

- NFHP Funds leveraged \$2.7 Million in USFWS and FHWA BIL Funding

- 2023 Waters to Watch Feature

- Building Connectivity Both in the Watershed and Community





# SOUTHEAST ALASKA FISH HABITAT PARTNERSHIP

## • Engaging Tribal and Community Partners for Salmon Habitat Hand Tool Restoration

- Margaret Creek Watershed – Tongass National Forest
- Unique Bass Pro Support via NFHP Connections
- Ketchikan Indian Community = Building Community Pride



# Future Directions...

- Mariculture and Coastal Strategy Focus on Nearshore Habitats
- Leveraging BIL – Continuing to Address Fish Passage Issues on Legacy Logging Roads Across the Tongass and on Tribal Lands
- Addressing Data Gaps Across the Region
- Build and Maintain Capacity Among our Conservation Partners

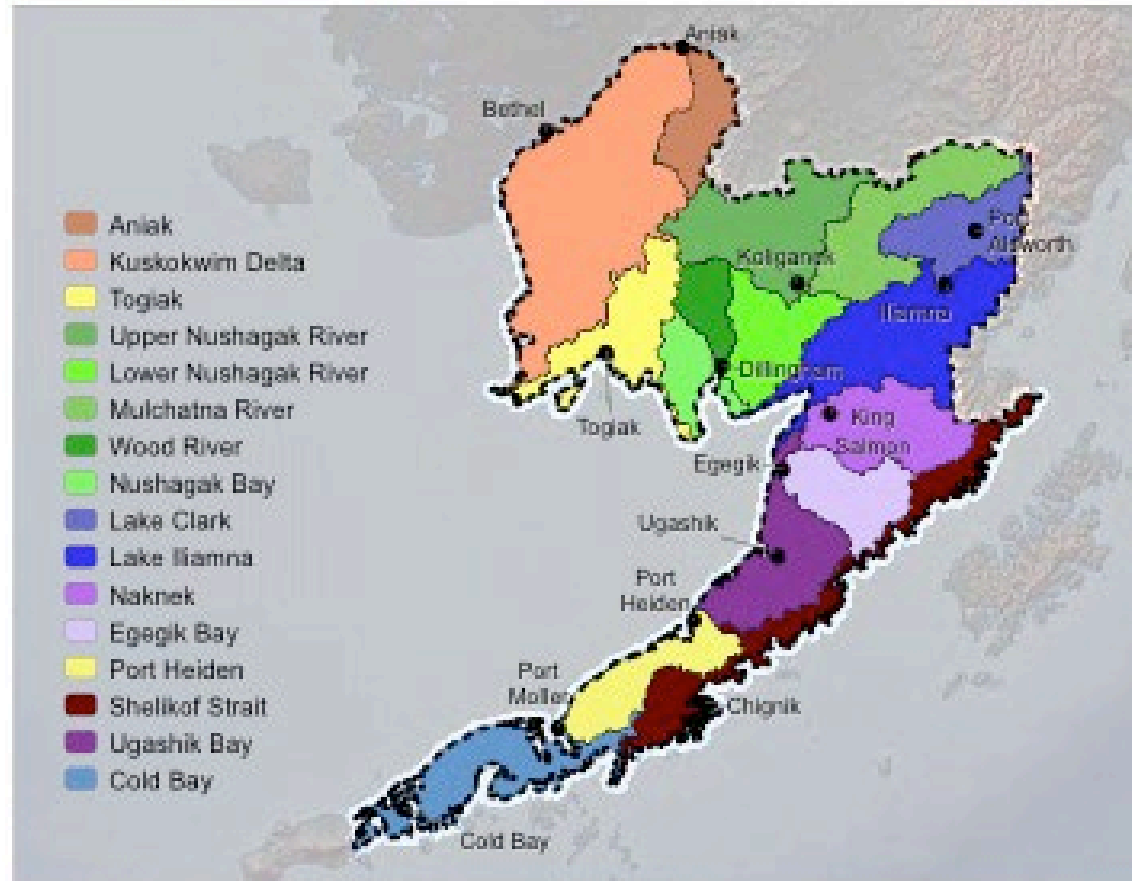




Coordinating Organization  
and Fiscal Agent  
Bristol Bay Heritage Land  
Trust

## SW Alaska Salmon Habitat Partnership

- Formed in 2000 as the SW Alaska Conservation Coalition, Board recognized as SW Alaska Salmon Habitat Partnership in 2008.







*2024 Academy - Igiugig on Kvichak River*



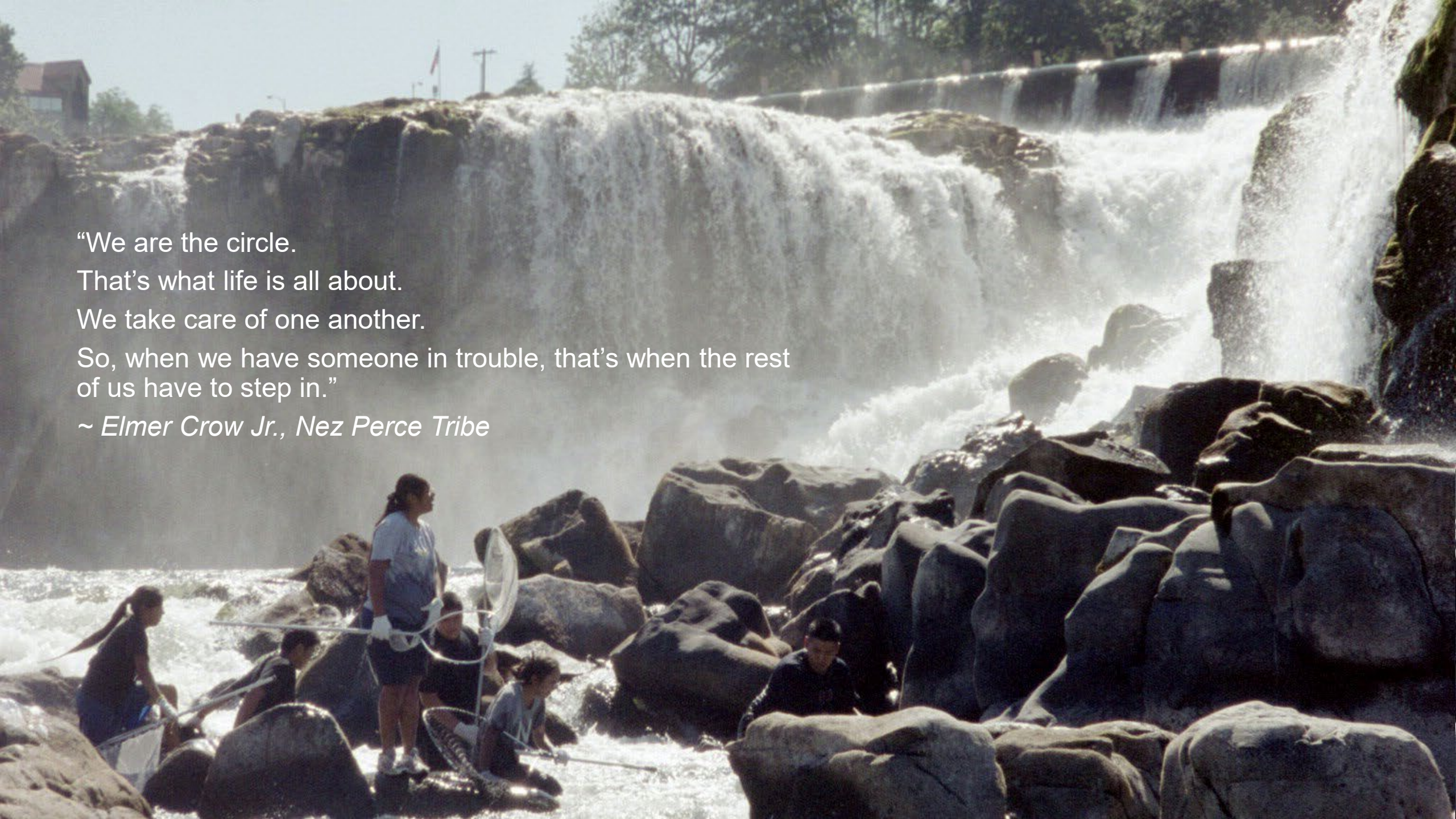
*2009 Electrofishing - Kaktuli River Drainage*

- 79,812 Acres Conserved by Coordinating Organization Bristol Bay Heritage Land Trust
- 1,350 Stream Miles added to Alaska Anadromous Waters Catalog
- Instream Flow / Water Reservations for fish pending on 430 Stream Miles by various partners
- 183 participants through the Bristol Bay Flyfishing & Guide Academy since 2008
- \$2,708,000 NFHP funds since 2008 invested in SW Alaska, matched/leveraged with estimated \$36,788,200 in non-Federal funds



**PACIFIC  
LAMPREY  
CONSERVATION  
INITIATIVE**

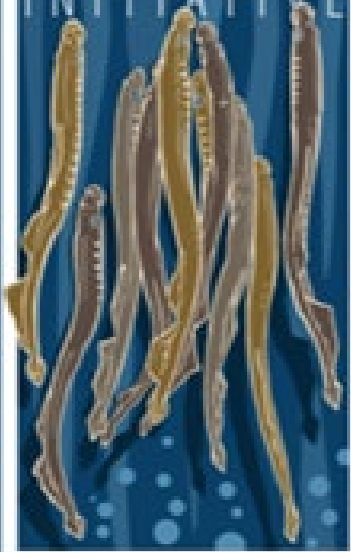
An illustration of several Pacific lampreys swimming in a blue, bubbly environment. The lampreys are depicted in various orientations, some swimming upwards and others downwards. The background is a dark blue with light blue bubbles, giving the impression of an underwater scene.

A large waterfall cascades over dark, jagged rocks. In the foreground, a group of people, including children and adults, are gathered on the rocks. Some are using traditional fishing tools, such as long poles and nets, to catch fish in the turbulent water. The scene is set in a natural, outdoor environment with trees and a building visible in the background.

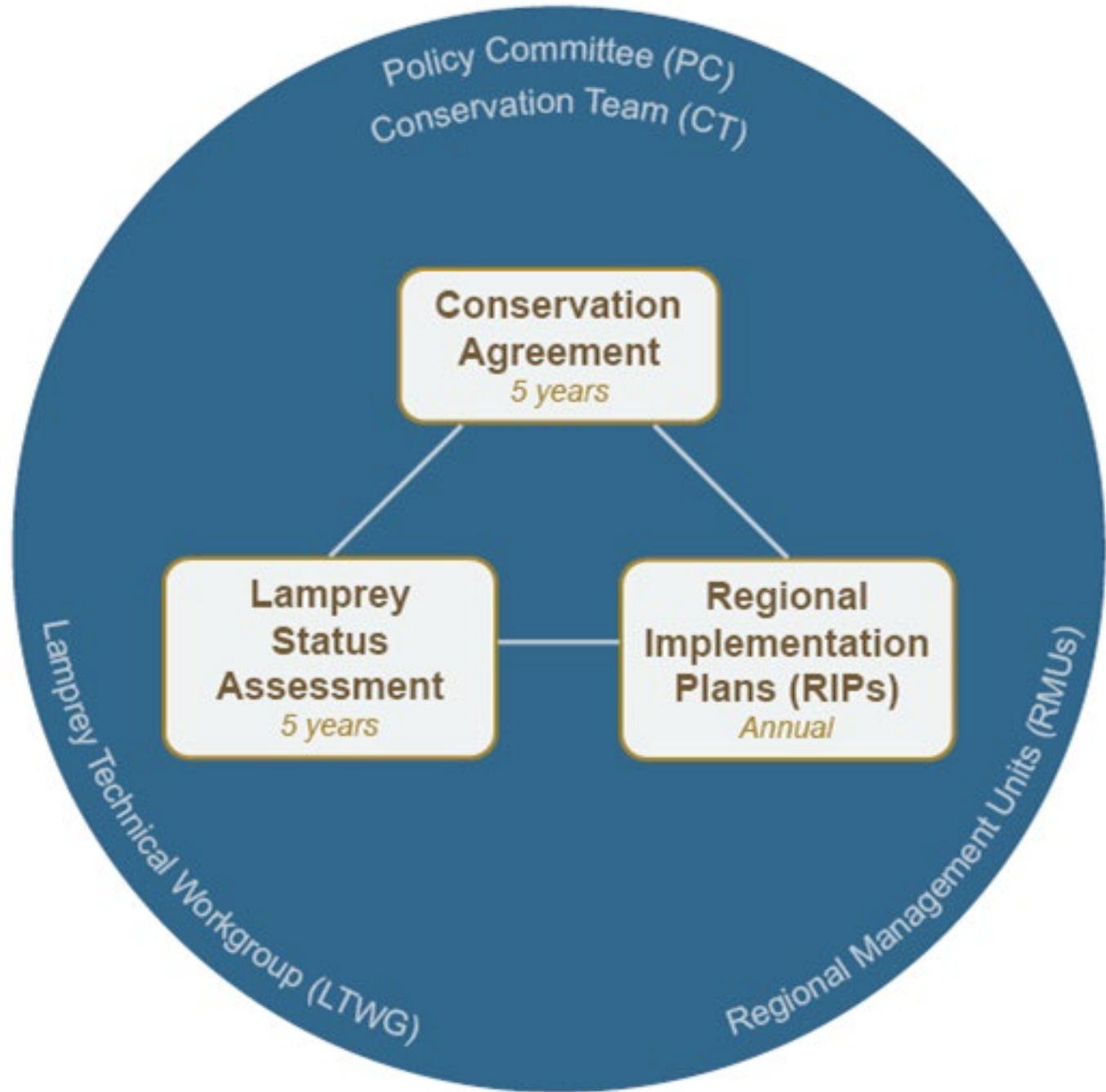
“We are the circle.  
That’s what life is all about.  
We take care of one another.  
So, when we have someone in trouble, that’s when the rest  
of us have to step in.”

~ *Elmer Crow Jr., Nez Perce Tribe*

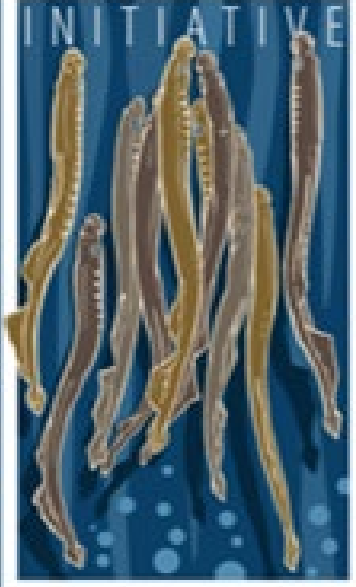
PACIFIC  
LAMPREY-  
CONSERVATION  
INITIATIVE



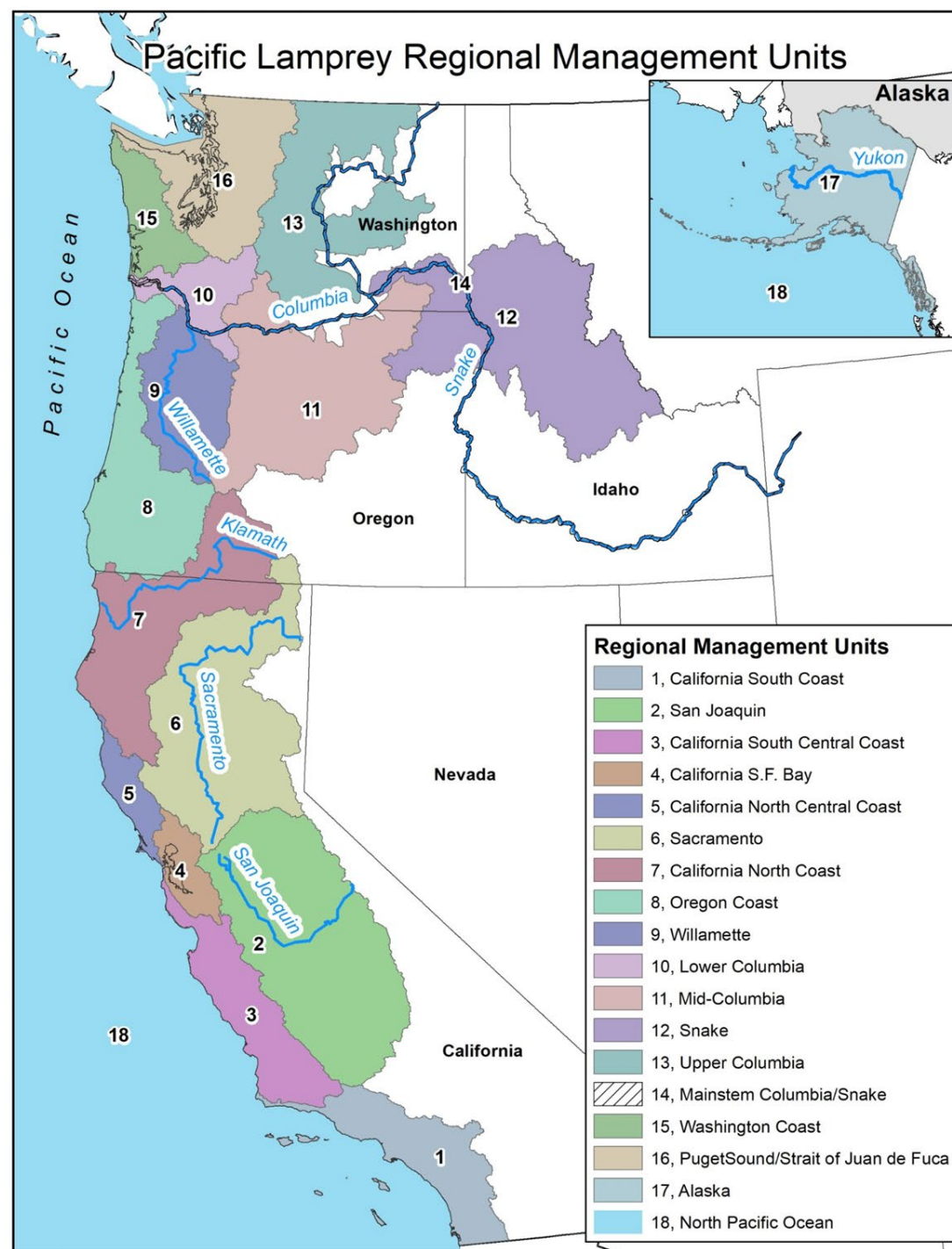
# Foundations



# PACIFIC LAMPREY CONSERVATION INITIATIVE



## Alaska Regional Management Unit (RMU) Regional Implementation Plan



## Lamprey projects funded from 2018 to 2024

- 33 projects funded by BPA
- 22 NFHP Projects

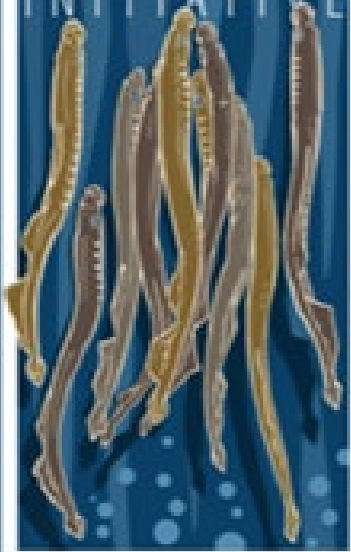
## Bonneville Power Administration

- Providing \$300,000 annually since 2018
- Funding available to projects in the Columbia River Basin

## National Fish Habitat Partnership

- Providing ~\$300,000 annually since 2022
- Funding available to projects in any Regional Management Unit

# PACIFIC LAMPREY CONSERVATION INITIATIVE



## Alaska Priorities



- Outreach and awareness
- Distribution baseline

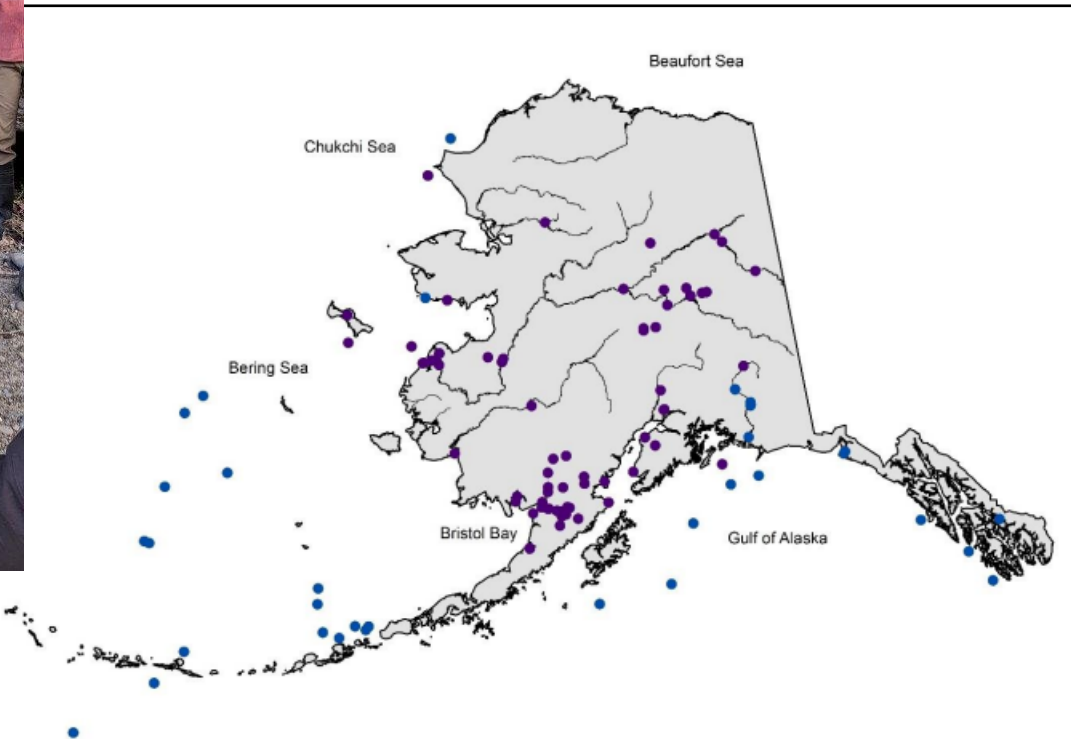
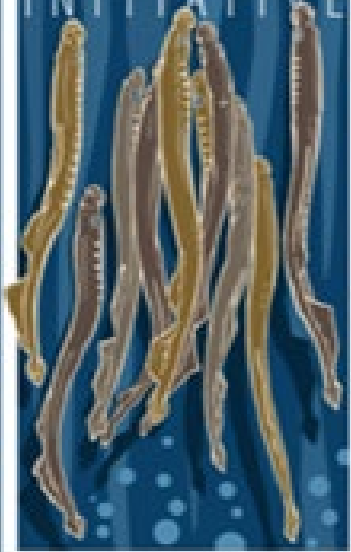


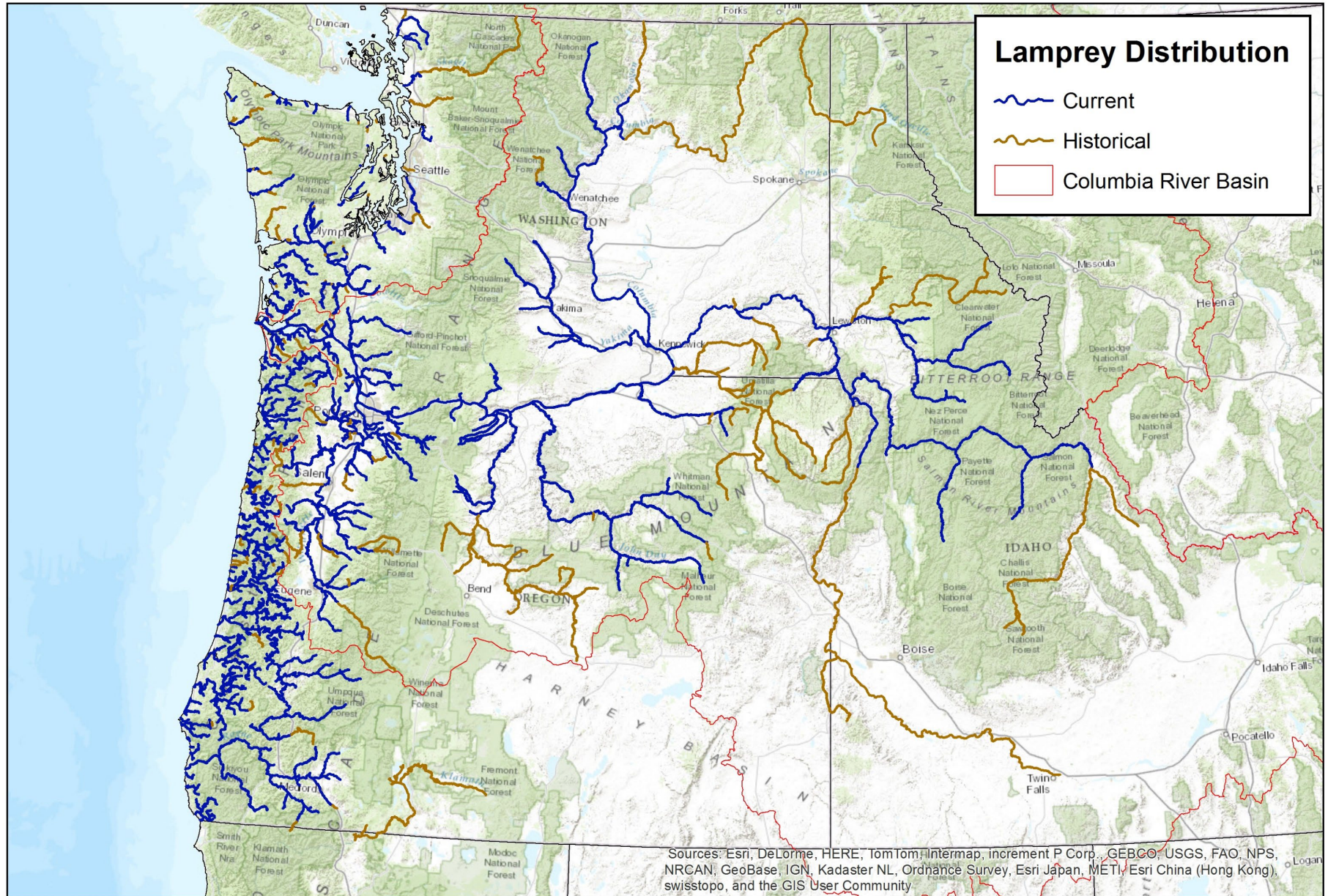
Figure 3. Global Biodiversity Information Network (GBIF) specimen records of Arctic lamprey (purple) and Pacific lamprey (blue) in the Alaska RMU.

# PACIFIC LAMPREY CONSERVATION INITIATIVE

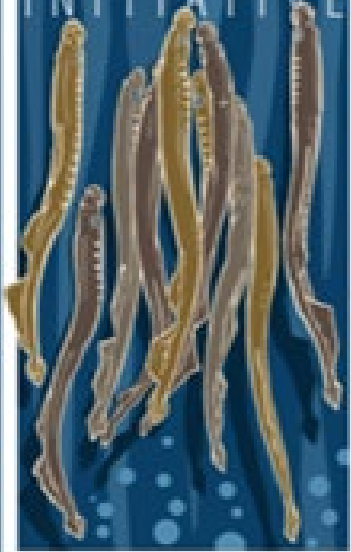


## Alaska Priorities

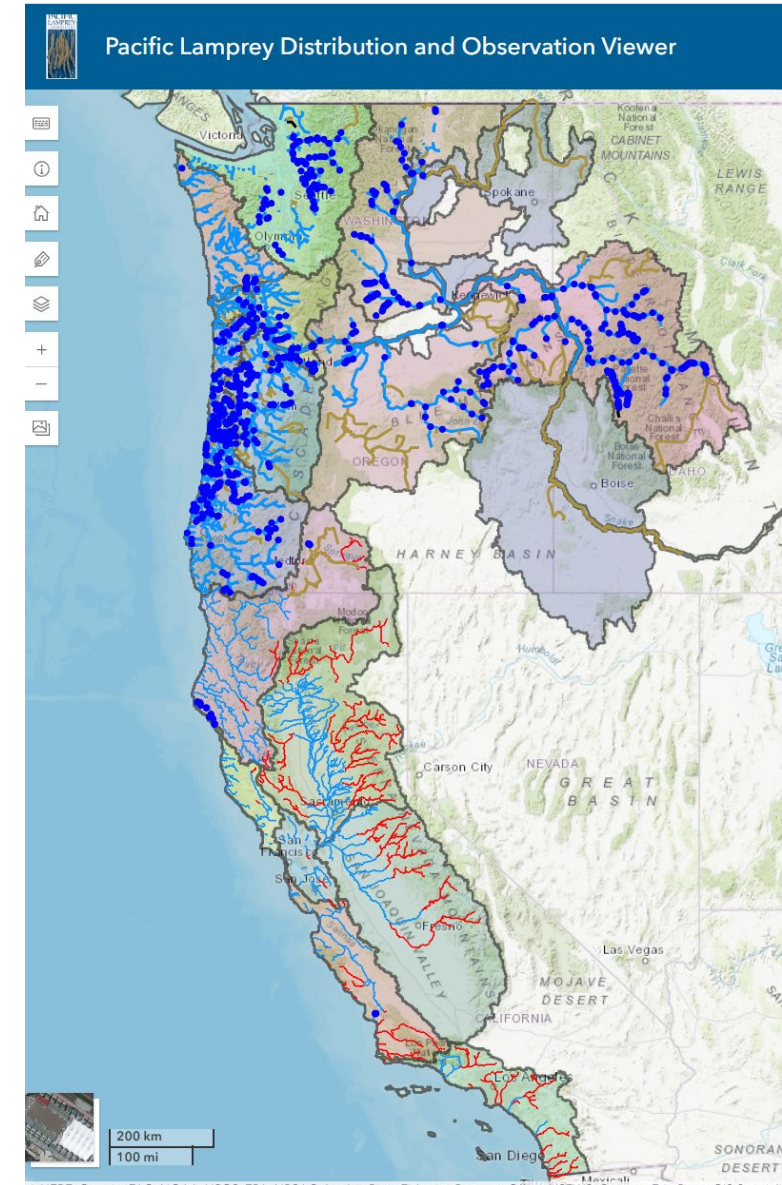
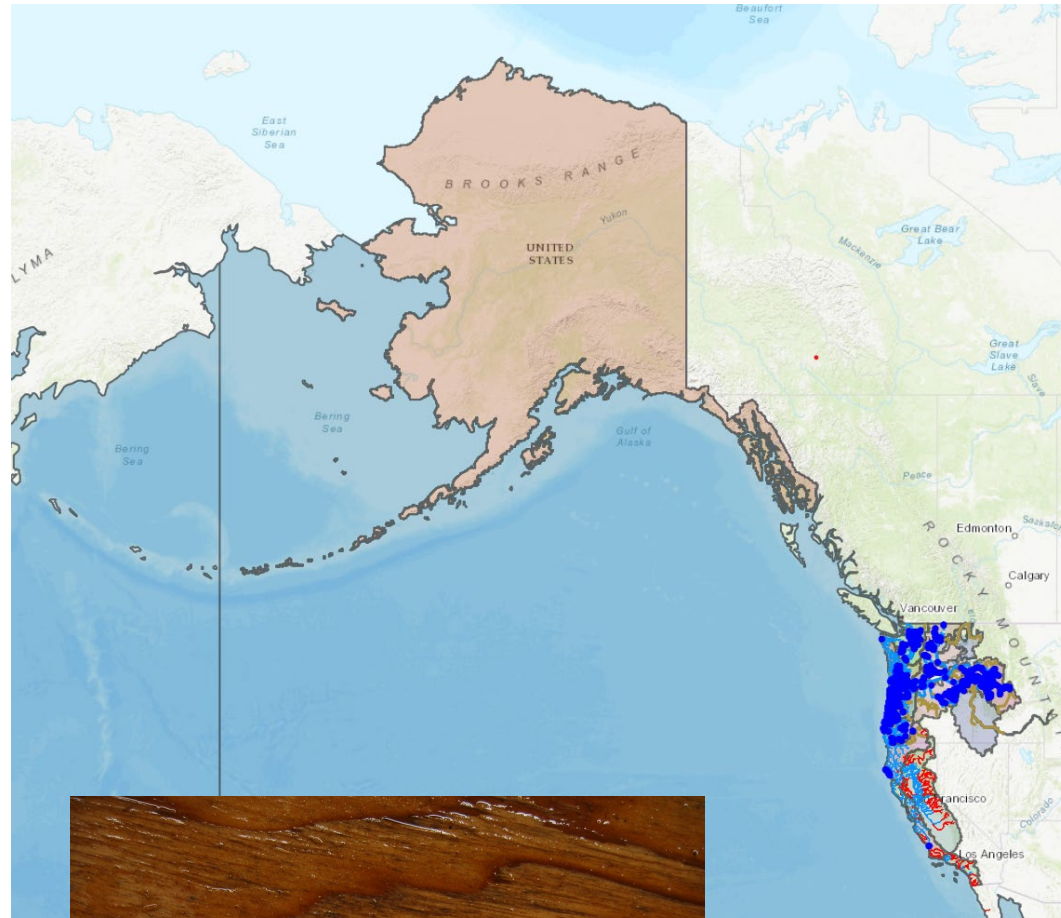
# Current and Historic known Distribution of Pacific Lamprey



# PACIFIC LAMPREY CONSERVATION INITIATIVE



## Alaska Priorities



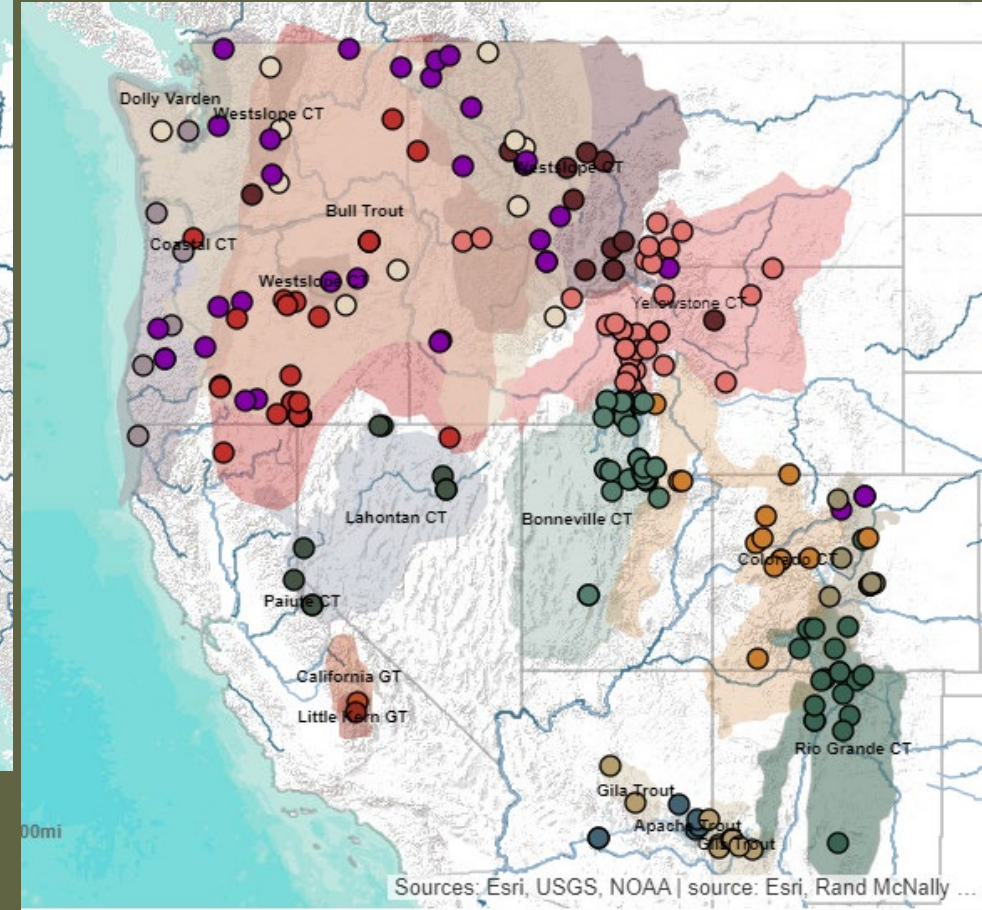
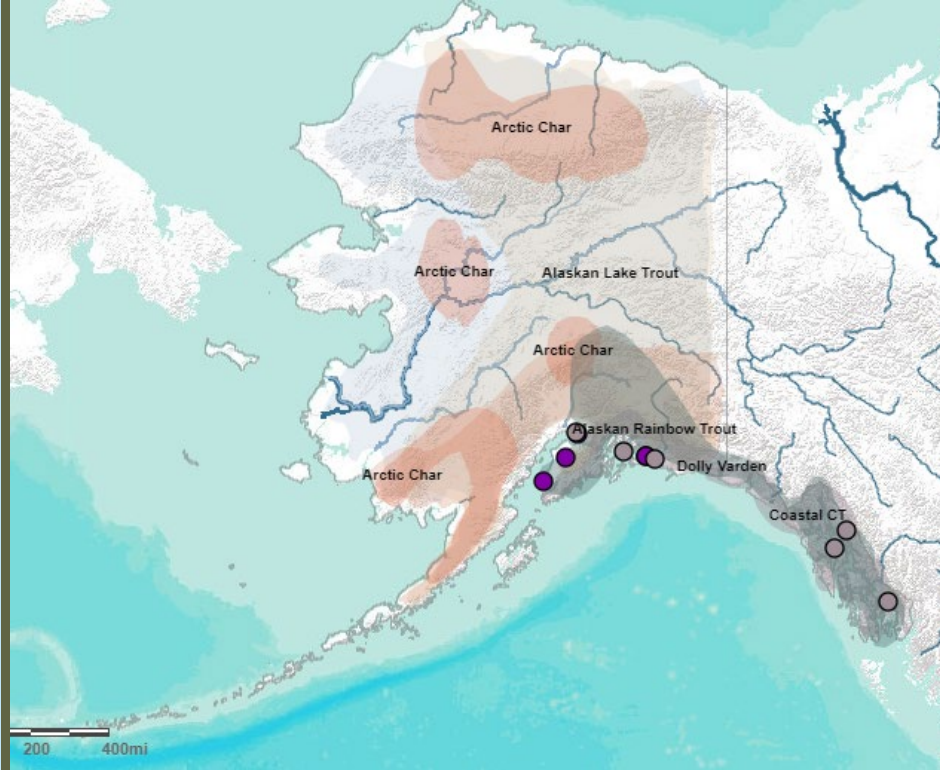


# FY22 NFHP - Integrating Lamprey into Restoration Project & Lamprey ID Workshop Series in Washington and Alaska



PACIFIC  
LAMPREY  
CONSERVATION  
INITIATIVE





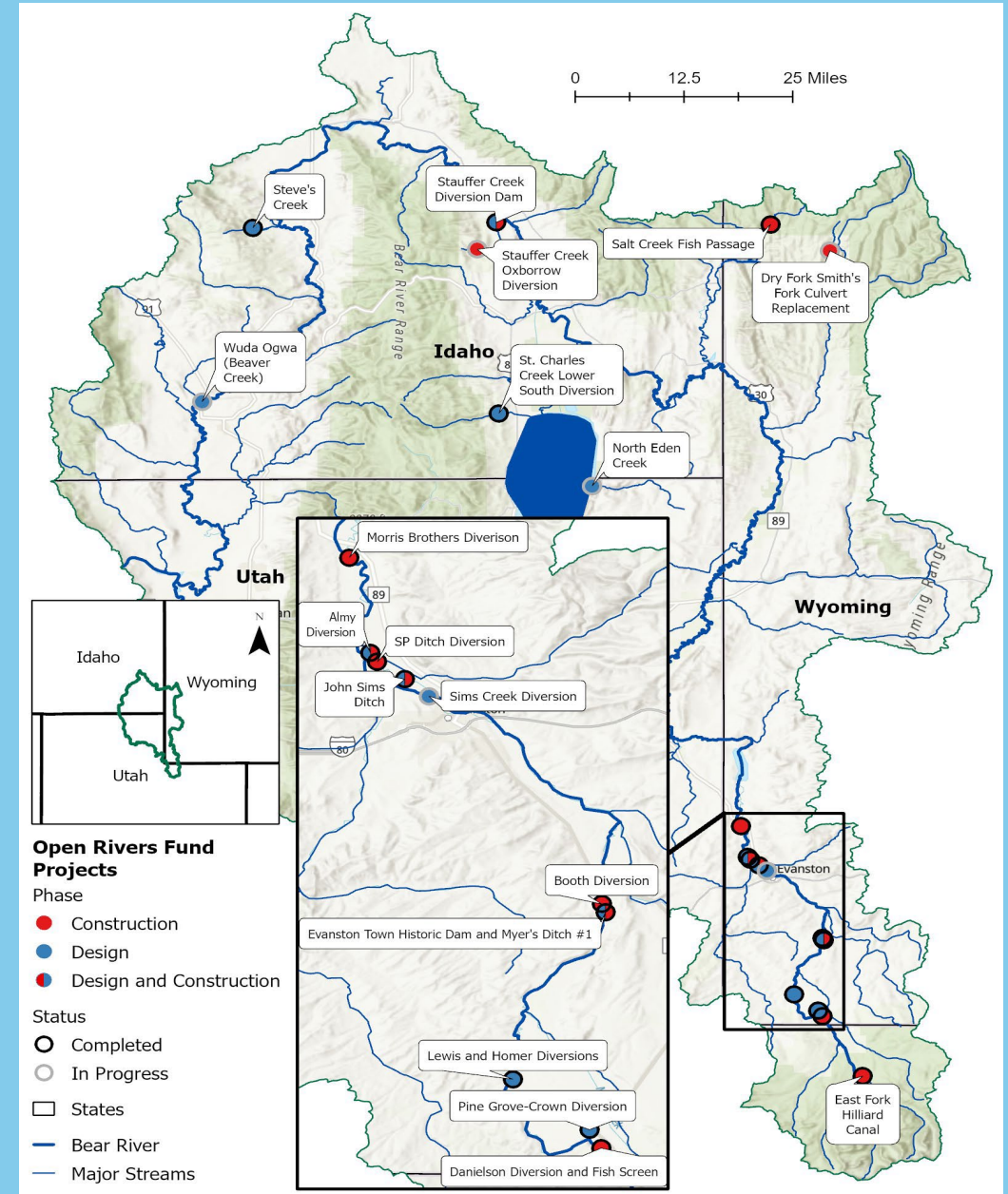
# Western Native Trout Initiative

- WNTI Projects map updated through 2024
- Individual state databases with updated information on projects
- All information linked to WNTI Native Trout Challenge

<https://westernnativetrout.org/projects-map/>

# Bear River Project Update

- Since 2018, 145 of 300 miles of Bear River habitat has been reopened in Utah, Wyoming and Idaho.
- Open Rivers Fund has contributed almost \$1.7 million including a recent \$288,000 gift to fund three new projects in 2025.
- Leveraged funds have created \$6 million in project donations.
- To date, 25 fish barriers and fish passage projects have been completed.
- Continuing strong partnerships with Trout Unlimited, USFWS, local municipalities and MOST importantly local landowners/ranchers.
- WNTI Small Grants Program funded Bonneville Cutthroat mural in Evanston, Wyoming to educate and celebrate the Bear River Project.



The Future?

# Snake River System/Yellowstone Cutthroat Trout Large Scale Protection

## Proposal Includes:

- WNTI States: Wyoming, Idaho & Montana.
- Replicate WNTI Bear River Project by process, relationship building and partnerships.
- Snake River/YCT working group formed made up of current WNTI Steering Committee Members.
- The WNTI Steering Committee has approved the Working Group to begin collecting project examples.
- Dovetails with 2021 NFHP/WNTI funded project to create a shared database of YCT genetic assessments.



# WNTI Native Trout Challenge Update

- WNTI's recently completed web mapping providing anglers with information on qualified Challenge species including rivers/and streams with populations of each native trout.
- Since its inception in 2019, the Challenge has registered 1,214 anglers.
- 245 Anglers have completed the Challenge at one of the three levels of participation.
- Program will continue to strongly support WNTI's mission to preserve and protect native fish habitat while participating in a "bucket list" experience.



# *FHP Coordinator Panel*



**Alaska Fish  
Habitat Partnerships**

# FHP Coordinator Panel

## Panel Questions:

- Tell us about partners that you currently work with and partners that you would like to work with in the future
- What are your current priority category of projects? (e.g., assessment vs. restoration)
- What are future priorities of your FHPs?
- How is climate change affecting the work that you are doing or need to do?
- Besides more money, is there anything you need to be able to more effectively address your FHP's objectives?

