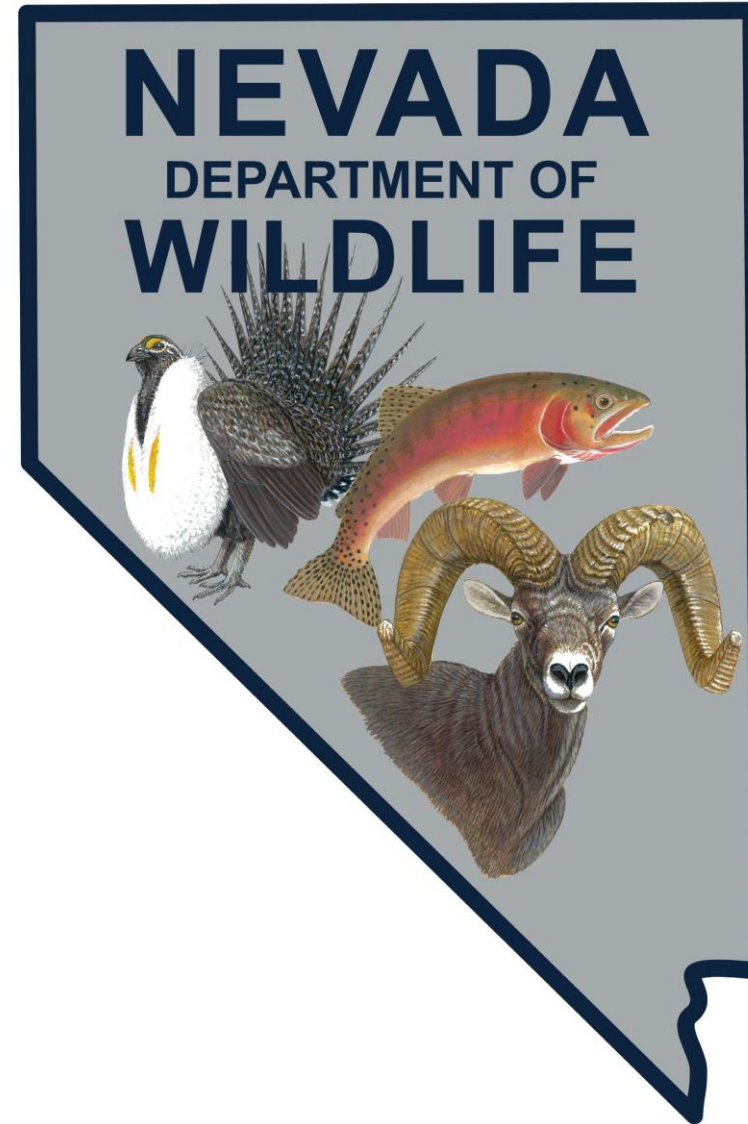


Nevada Department of Wildlife

- Large state, small agency (<300 employees, ~40 Fisheries staff)
- 7 Divisions (DATS, Game, Con Ed, Diversity, Habitat, LE, Fisheries)
- Fisheries Division
 - Trout hatcheries
 - AIS
 - Fisheries Management





Varying Aquatic Habitats

Alpine lakes to exposed
aquifers

Fish Diversity

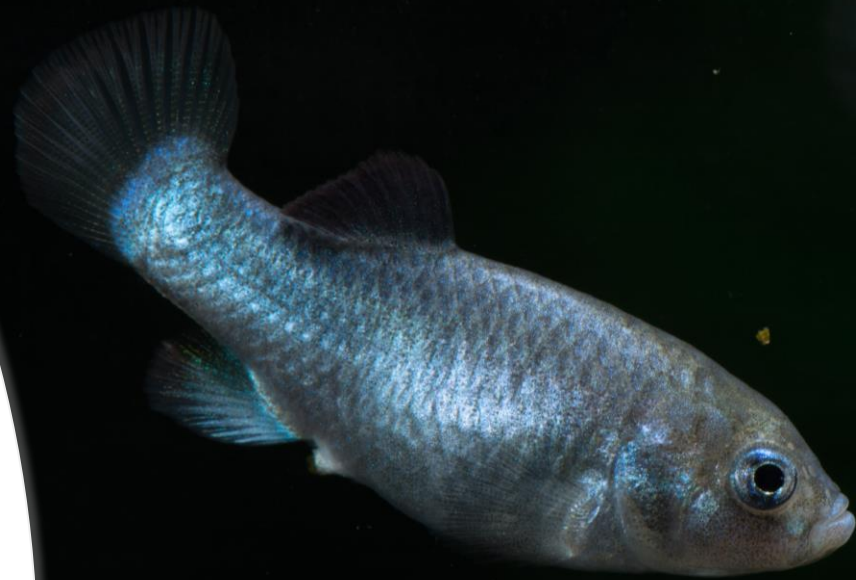
Devils Hole
Pupfish vs
Razorback
Sucker

~48 native
fishes

- Nearly half are ESA listed,
most state protected

24 sport fish
species

- 6 native





Challenges

- Habitat
 - Drought conditions
 - Streams, small impoundments
 - Diversions, old modifications and infrastructure
- Nonnative species
 - Illegal introductions
 - Aquarium dumping
 - AIS





Habitat, Habitat, Habitat

- Habitat restoration and improvement projects critically important
- NDOW and DFHP
 - Chair and multiple ExComm roles
- Examples from across the state

Warm Springs Natural Area Apcar Stream

Objective: Improve habitat for Moapa Dace by narrowing stream, creating drift stations, and revegetating stream banks

Implementation: Fall 2011 to Spring 2012

Plantings: Cuttings and containers of local riparian trees, shrubs, forbs, and grasses

Results: Narrowed 1500 feet of stream and planted many native species.

High survival rates:

- Sprouted cuttings (~50%)
- Sod (~90%)
- Propagated plants (~70%)



2011



2012



2013



Crowley Creek



Crowley Creek

- Improve perennial flow, water storage, riparian condition, and provide thermal refugia for LCT
- Beaver Dam Analogs and Post Assisted Log structures
- Began in 2023
- 2024 surveys resulted in LCT captures into these restoration sites for the first time in over a decade





Cave Lake





Cave Lake

Use similar types of artificial habitat structures across the state

Lake Mohave





Lake Mohave

PVC, brush bundles,
xmas trees, recycled
irrigation

Welcome to Nevada!

