

April 30, 2024



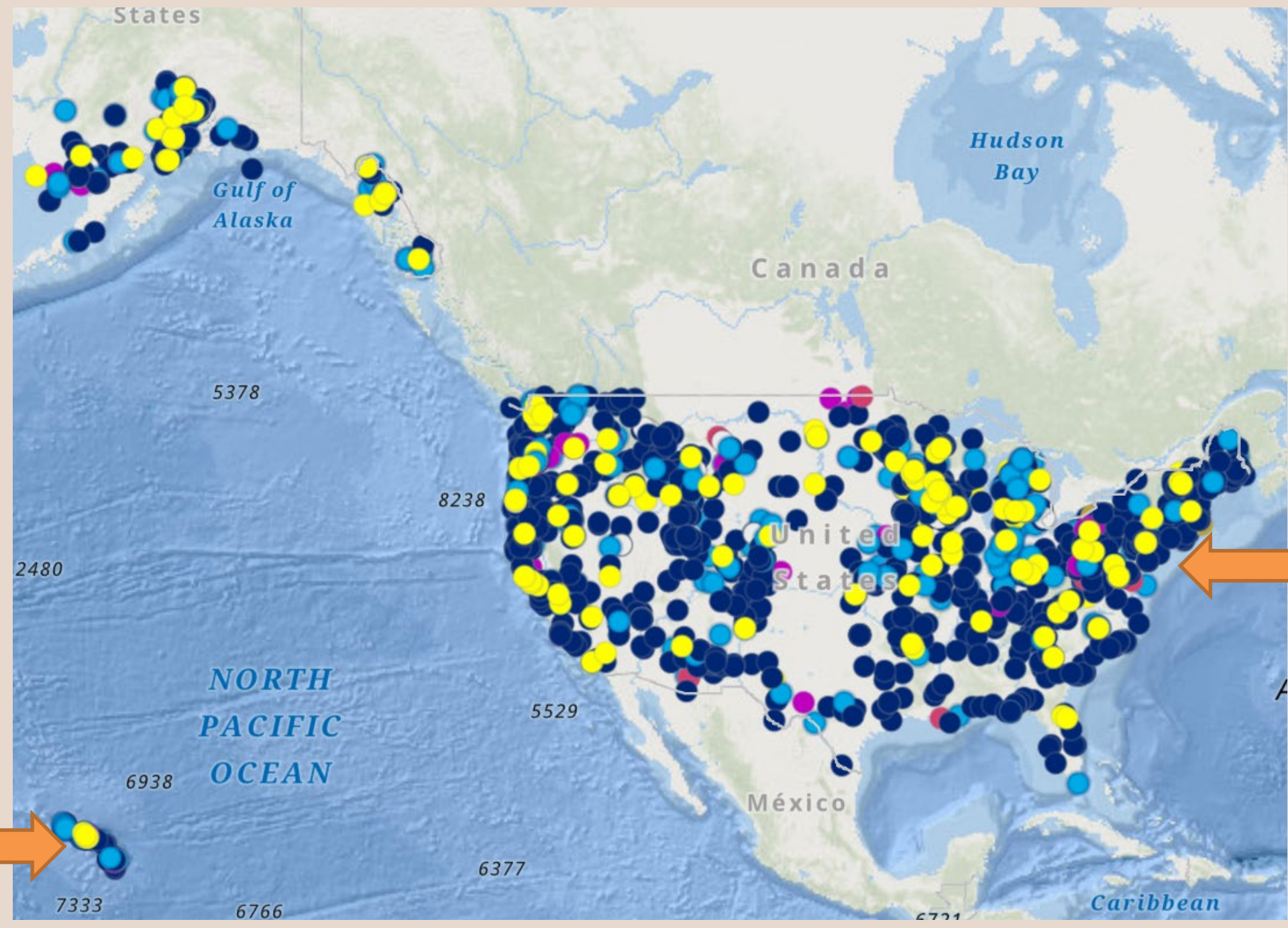
NATIONAL  
**FISH HABITAT**  
PARTNERSHIP

NFHP Database Update

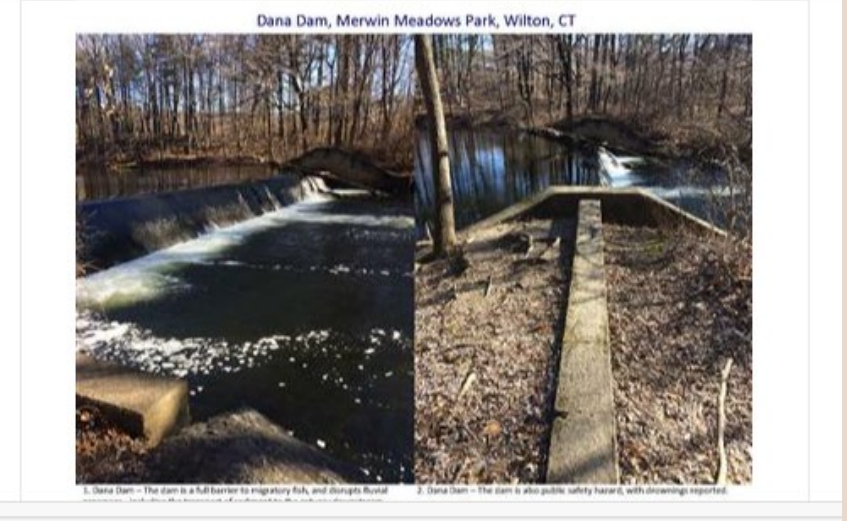
[FISHHABITAT.ORG](https://fishhabitat.org)



Project Name	Create Critical Reef Habitat and Outreach to Fishing Community on Impact
NFHP Proponent / Sponsor	National Fish Habitat Partnership Board
Additional NFHP partners	hfhp
Short Description	To address loss of coral habitat, Kuleana Coral Reefs (KCR) carried out coral restoration and experiential education on the West Coast of Oahu in conjunction with the community and government partnerships. Deliverables for the project include 200 coral fragments, 20 Coral Modules (small artificial reef structures), restoration of 40 dislodged mature coral colonies, and 2 experiential education events with the fishing community.
Project Status	Project active
Status within RFP Process	nfhp_funded_other
FHP Project Rank	
FHP Evaluation Summary	
Fiscal Year (FY) Proposed	2022
Fiscal Year (FY) Funded	2022
Month and Year Completed	
Waters to Watch Year	
Project Category	On the ground / engineering
Last update: 1 minute ago	
Project Details	



Project Name	Dam Removal and Diadromous Restoration of the Norwalk River Watershed at Merwin Meadows Park
NFHP Proponent / Sponsor	Atlantic Coast Fish Habitat Partnership
Additional NFHP partners	
Short Description	We seek support for removal of the derelict Strong Pond Dam (CT Dam #16105), also locally known as Dana Dam, which is a six-foot high and 90-foot long run-of-river dam located nine miles from Long Island Sound in the Town of Wilton's Merwin Meadows Park. Built a century ago to create a recreational pond, the dam blocks fish migration and presents a significant flooding and safety hazard. Removal will restore fluvial processes in the Norwalk River, benefit diadromous fish species, and mitigate flood risk to adjacent infrastructure.
Project Status	Project active
Status within RFP Process	nfhp_funded
FHP Project Rank	2
FHP Evaluation Summary	
Fiscal Year (FY) Proposed	2022
Fiscal Year (FY) Funded	2022
Month and Year Completed	
Last update: 29 seconds ago	
Project Details	

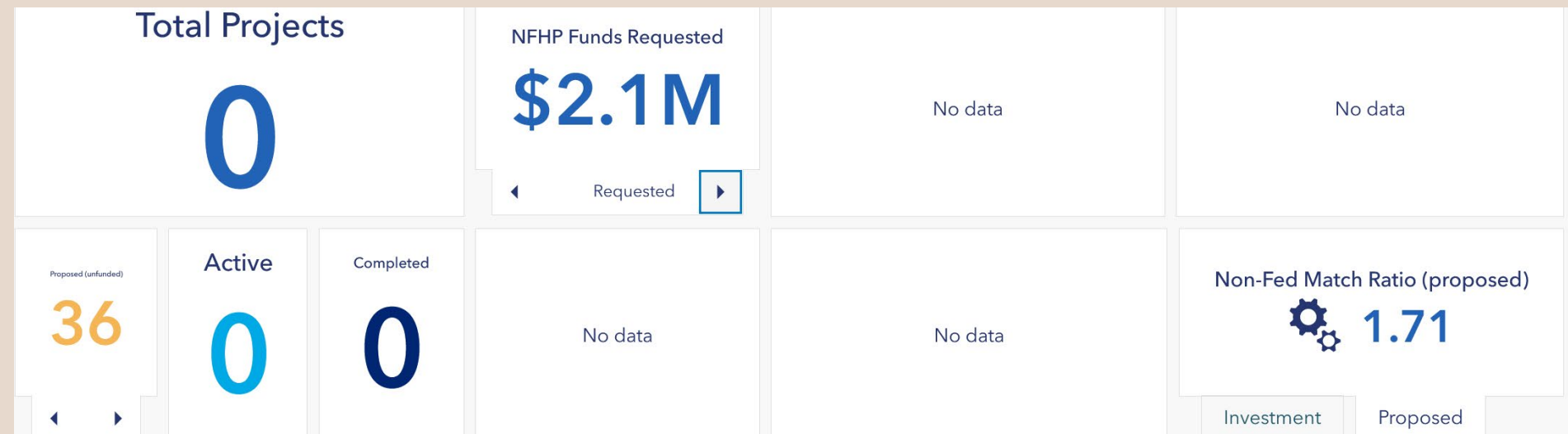


# Project Tracking System Updates

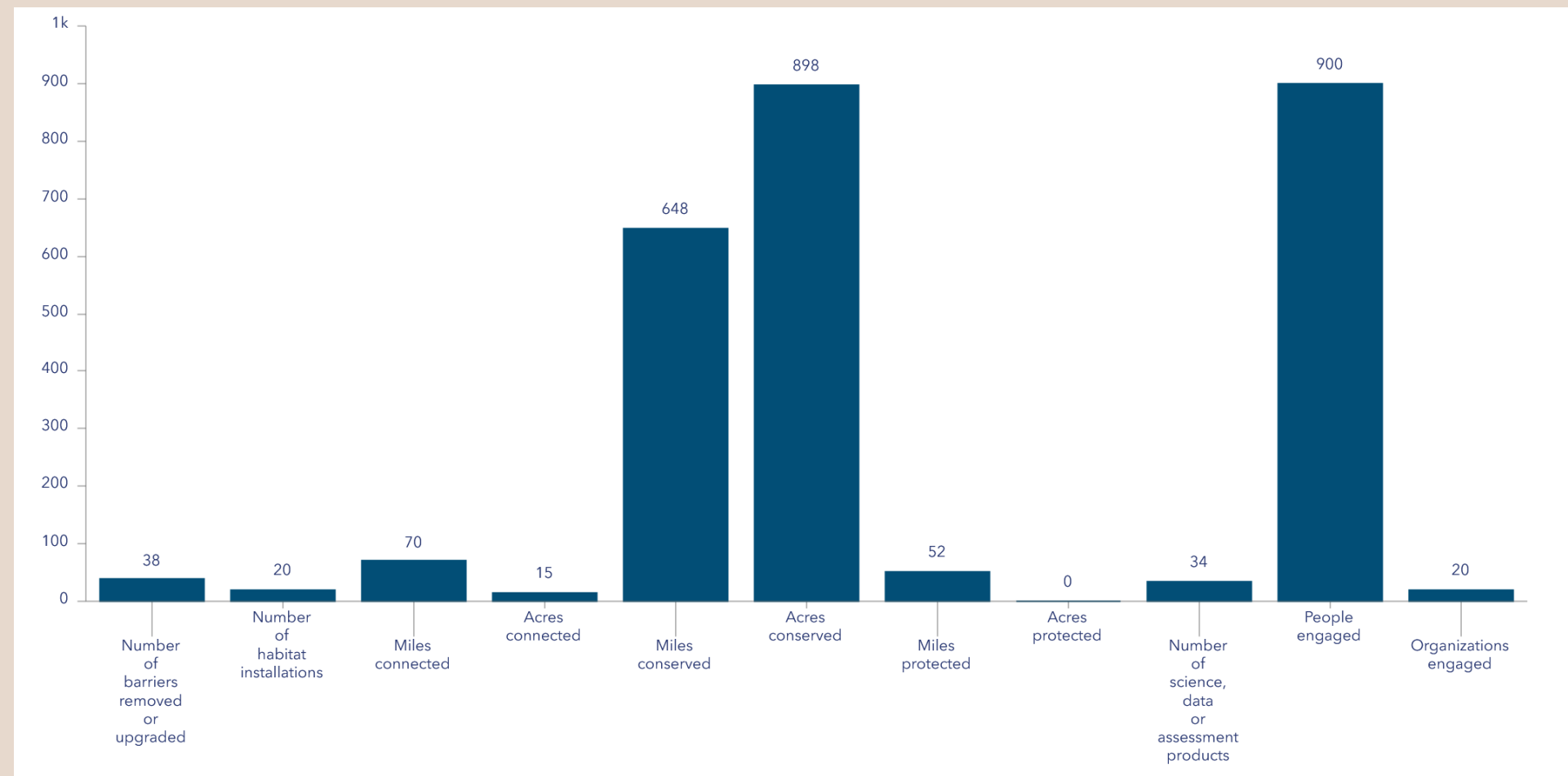


# FY 24 Unfunded Projects

- Approximately 36 projects (still pending)
- Unfunded projects have been vetted by FHP, NFHP Board and USFWS.
- What is the best way to share “unfunded” list with you?



Needed funding for ~36 unfunded projects



What more we can accomplish with these 36 projects

# FY 25 Proposed Project Review

FHP's enter their proposed projects into the database

Board review team uses "Dashboard" to review projects for ACE Act/NFHP Criteria

Projects	NFHP Funds Requested	Federal Leveraged Funds	Non-Federal Match Funds
<b>123</b>	<b>8.6M</b>	<b>13M</b>	<b>21.4M</b>
	All Leveraged Funds	Other Leveraged Funds	Non-Federal Match Ratio
	<b>39.5M</b>	<b>5.3M</b>	<b>2.49</b>

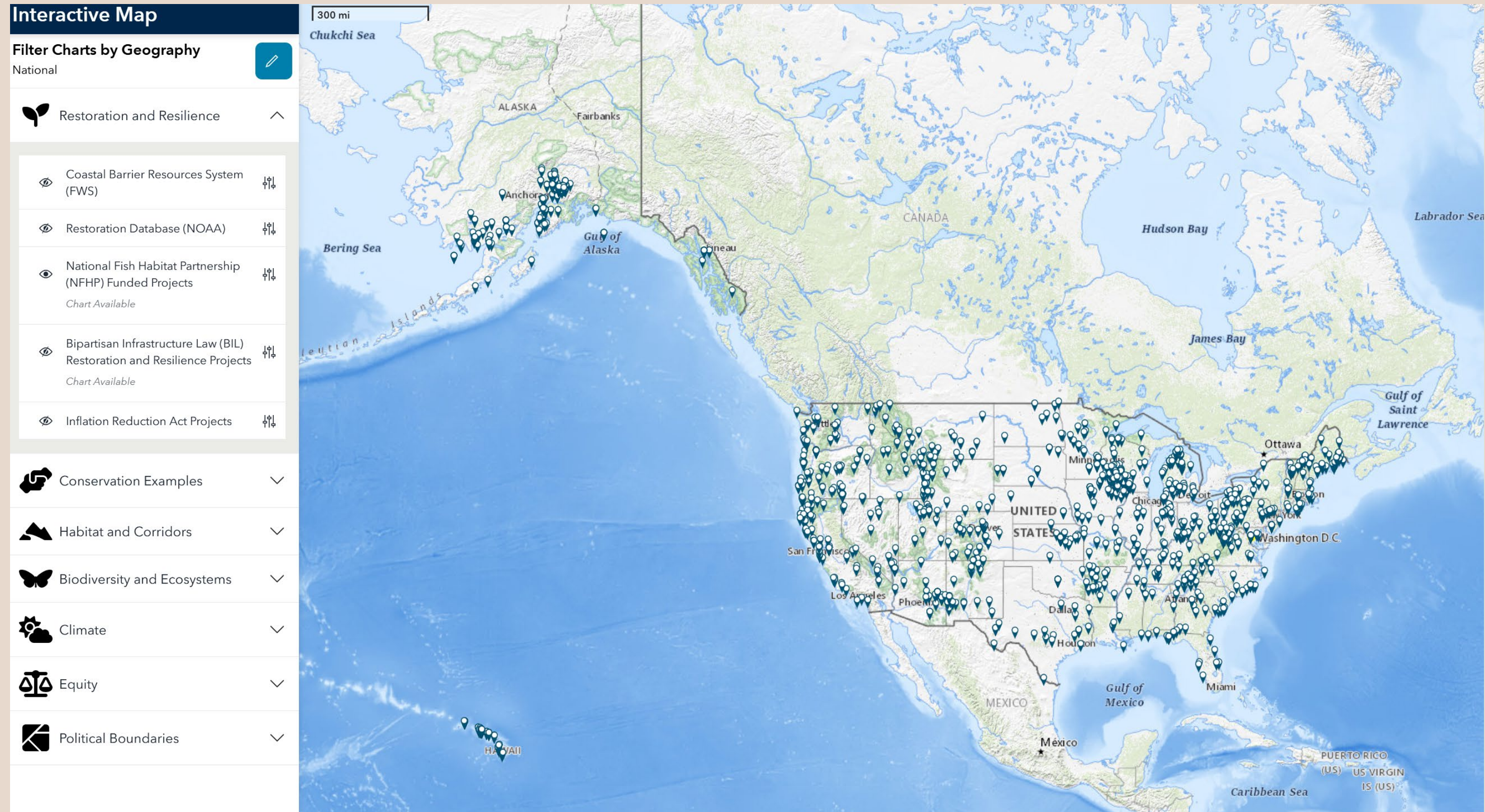
Map showing project locations across the United States, including the Gulf of Alaska, Great Slave Lake, Hudson Bay, Lake Superior, and various basins like the Northeast Pacific Basin and North American Basin.

- ACFHP Operational Funding (1)
- Allegheny River Side Channel Restoration Phase 3, Venango County, PA (1)
- CFFP Coordination & Operational Support (1)
- Cloverlick Creek Dam Removal and Stream Restoration (1)
- DARE Coordination, Operation and Partnership Support 2025 (1)
- DFHP Operational Support FY2025 (1)
- EBTJV Operations (1)
- FY25 Coordination of the Ohio River Basin Fish Habitat Partnership (1)
- FY25 Fishers & Farmers Coordination Communication and Science (Operations) (1)
- Gray Prairie Gray Creek Restoration (1)
- Great Lakes Basin Fish Habitat Partnership Operational Support (FY25) (1)
- Hawaii Fish Habitat Partnership Operational Support FY25 (1)
- Increasing local resident capacity support in USFWS assessment projects (1)
- KPFHP Coordination and Operational Support (1)
- Laramie County Native Fish Habitat Project (1)
- Mat-Su Basin Salmon Habitat Partnership Coordination and Outreach Engagement (1)
- Midwest Glacial Lakes Partnership Operations (1)
- PLCI Coordination & Operational Support (FY 25) (1)
- PMEP Operational Support (1)
- Reservoir Fisheries Habitat Partnership Operations (FY 25) (1)
- SARP Operational Funding FY 2025 (1)
- SEAKFHP FY25 Coordination and Operational Support (1)

Tribal Project Lead? **No**



# Conservation Stewardship Atlas





# Next Steps

- Public facing dashboard
  - Create AFWA region filter
- Update status of FY24 projects (coming soon)
- FHP review and improvements of all projects in database
- Continue to build efficiencies with USFWS reporting (Ecosphere, aka FIS)
- Submitted 2 presentations for AFS
  - FHP Partnership Session
  - USGS – Commission Partnership Session

# Questions?

✉ Kate: [ksherman@psmfc.org](mailto:ksherman@psmfc.org)  
Daniel: [dwieferich@usgs.gov](mailto:dwieferich@usgs.gov)  
Gary: [gwhelan1957@gmail.com](mailto:gwhelan1957@gmail.com)

