

April-May 2024

The logo features a stylized blue fish on the left, with its body forming a wavy shape that suggests water or a riverbank. To the right of the fish, the word "NATIONAL" is written in a smaller, blue, sans-serif font. Below "NATIONAL", the words "FISH HABITAT" are written in a large, bold, blue, sans-serif font. Underneath "FISH HABITAT", the word "PARTNERSHIP" is written in a smaller, blue, sans-serif font.

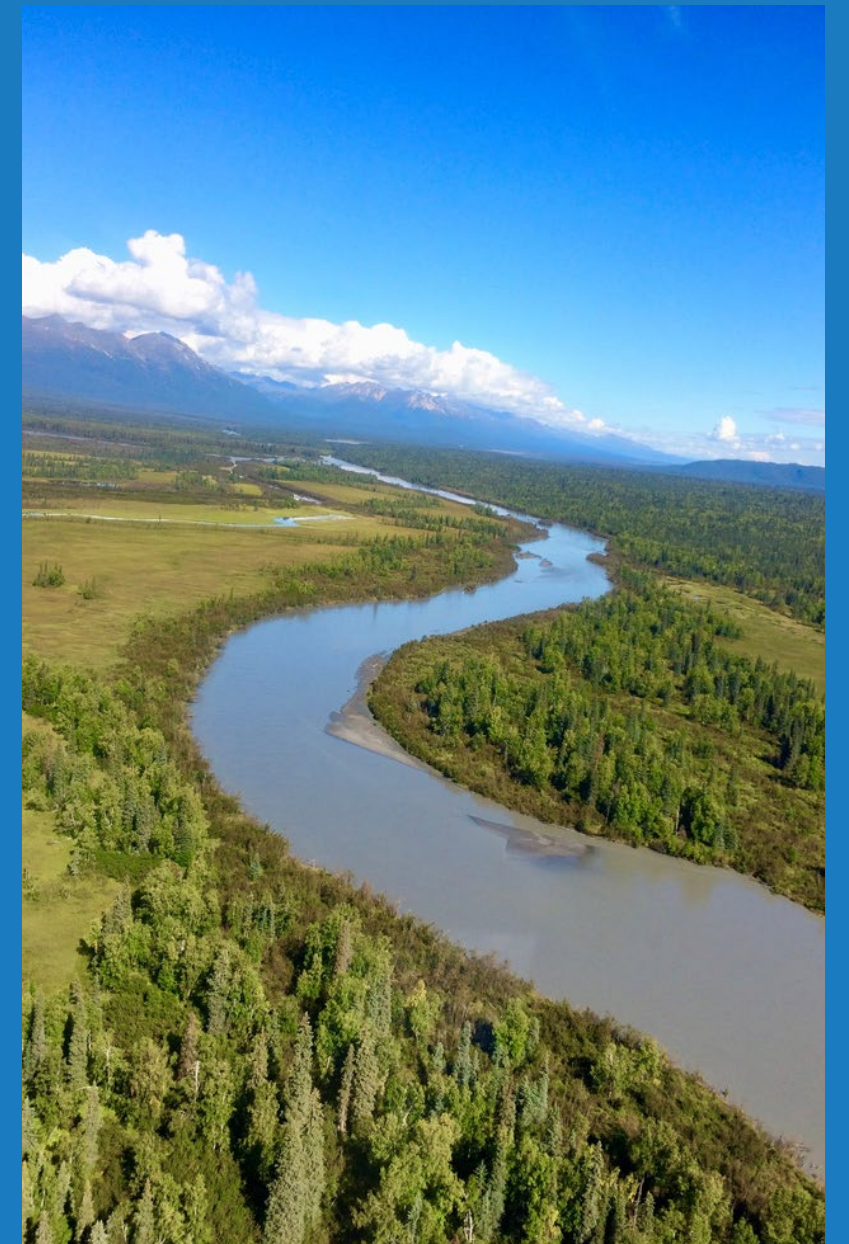
NATIONAL
FISH HABITAT
PARTNERSHIP

Science and Data Committee Update

FISHHABITAT.ORG

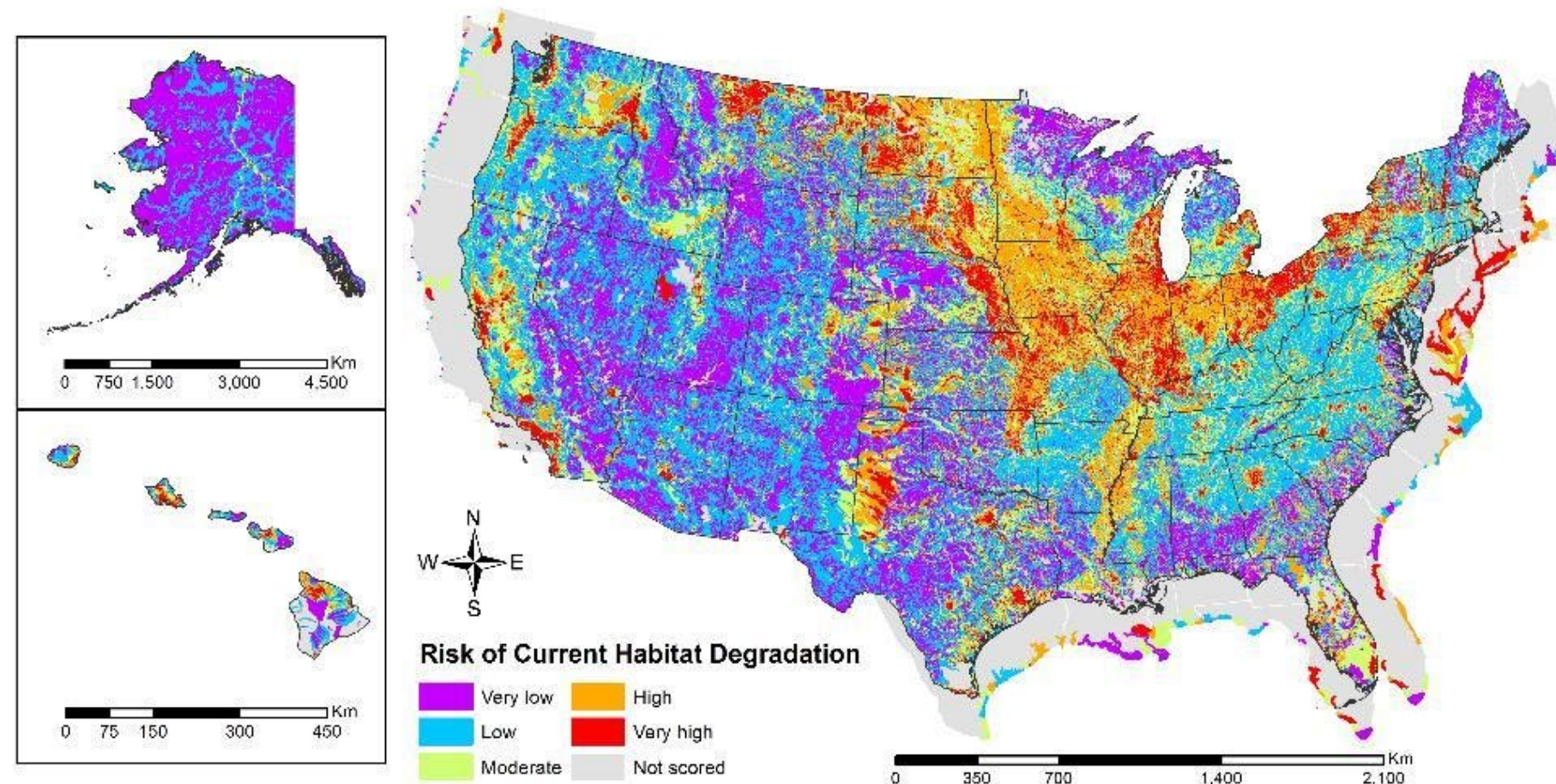
Outline

- **Assessment Update**
- **National Conservation Priorities**
- **New References**



2025 National Fish Habitat Assessment

- **ACE Act requires an updated Assessment that fills gaps in 2016 Assessment**
- **Board Direction**
 - **Update existing data layers with new information**
 - **Add in hydrology, forest harvest, grazing intensity and socioeconomics**
- **FHP assessment-based component is also being developed at this time**
- **Initial funding for data layer updates is in place with main effort starting in June 2024 with full completion in 2026.**



National Conservation Priorities

- Conserve intact healthy waters
- Conserve hydrologic conditions for fish
- Conserve physical and living habitat for fish
- Reconnect fragmented fish habitats
- Maintain and improve structure and function of FHPs to conserve fish habitat
- Enhance recreational, commercial, subsistence, and traditional fishing opportunities



New References

- America the Beautiful 30 X 30 Stewardship Atlas (<https://apps.conservation.gov/atbatlas/explorer/?layers=>)
- America the Beautiful Freshwater Challenge - Tools (<https://www.whitehouse.gov/wp-content/uploads/2024/04/America-the-Beautiful-Freshwater-Challenge.pdf>)





National Fish Habitat Partnership Accomplishments For internal use only



Filters

FHP

Select FHP(s)

FY Funded

Select a year

FY Completed

Select a year

Project status

Select a status

Project category

Select a category

State(s)

Select a state or multiple states

Primary FWS region

Select a FWS region

Lead organization

Select an organization

Congressional district

220

280

1.1k

NFHP Investment

\$54.9M

Inv...

Federal Leveraged

\$43.7M

Non Federal Match

\$303.2M

Total Projects

1,674

Total Leveraged Funds

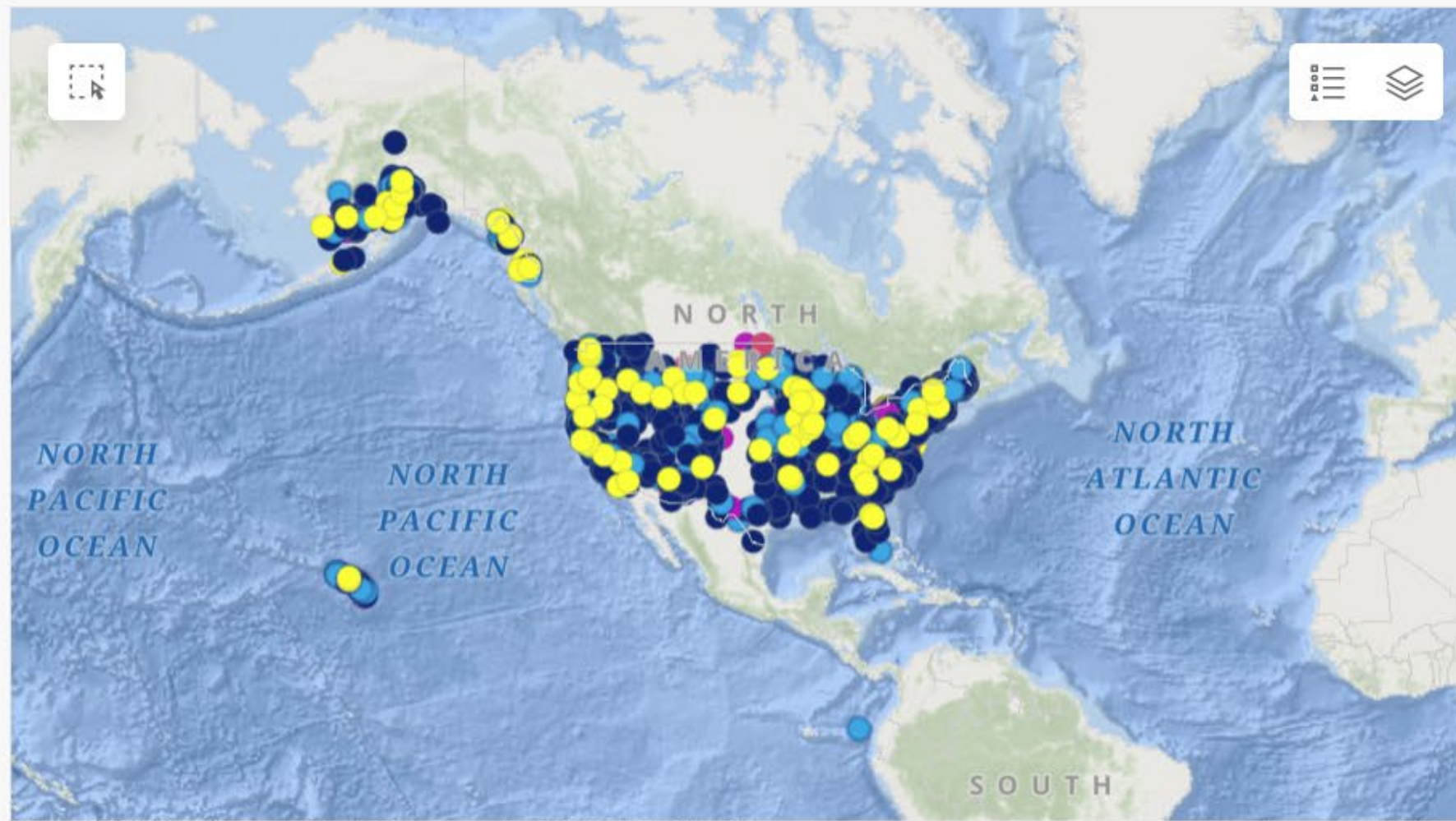
\$403.1M

Other Leveraged Funds

\$19.2M

Non Federal Match Ratio

5.52



Esri, GEBCO, Garmin | Esri, TomTom, FAO, NOAA, USGS

Powered by Esri



Map



Search...

Angel Creek Fish Barrier Removal Project, *Invalid Date*

Project lead: Sonoma County Public Infrastructure

NFHP sponsor: [California Fish Passage Forum](#)

Applying FISHPass in the Smith River Watershed, 2020

Project lead: Ross Taylor and Associates

NFHP sponsor: [California Fish Passage Forum](#)

Designing for Sturgeon Passage in the San Joaquin River at Eastside Bypass Control Structure, *Invalid Date*

Projects

1 of 50

Last edited by PSMFC_GIS on 3/19/2024, 6:05 PM.