

# Pacific Lamprey Fish Habitat Partnership

Update on Progress

*to the*

NFHP Board  
March 7, 2018

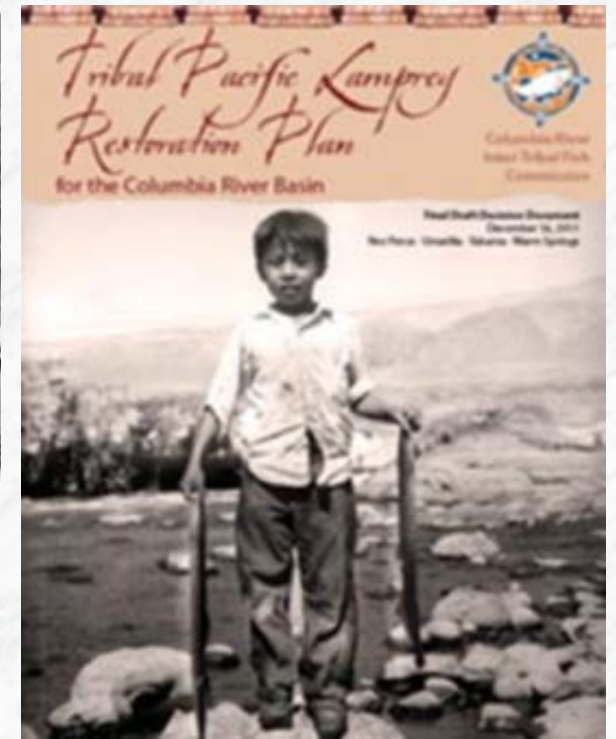
Bob Rose; [rosb@yakamafish-nsn.gov](mailto:rosb@yakamafish-nsn.gov)

Christina Wang; [christina\\_wang@fws.gov](mailto:christina_wang@fws.gov)

*Co-Chairs, Pacific Lamprey Conservation Agreement*

# Pacific Lamprey Conservation Initiative

- Began in 2007
- Arose from strong tribal concerns
- Integration of many tribal and agency plans
- Goal: Achieve long term persistence of Pacific Lamprey and support traditional tribal cultural uses.







# Partners

(36)

---

**Yakama Nation**

**Umatilla Tribes**

**Warm Springs Tribes**

**Cow Creek Band of Umpquas**

**Grand Ronde Tribes**

**Siletz Tribes**

**Blue Lake Rancheria Tribe**

**Mechoopda Tribe**

**Wiyot Tribe**

**Yurok Tribe**

**Coos, Lower Umpqua Siuslaw Tribes**

**California Dept of Fish and Wildlife**

**Oregon Dept of Fish and Wildlife**

**Idaho Dept of Fish and Game**

**Washington Dept of Fish and Wildlife**

**Alaska Dept of Fish and Game**

**Bonneville Power Administration**

**Northwest Power and Conservation Council**

**U.S. Army Corp of Engineers**

**U.S. Bureau of Indian Affairs**

**U.S. Bureau of Land Management – CA, ID & OR**

**U.S. Bureau of Reclamation**

**US Fish and Wildlife Service – Regions 1, 7 & 8**

**U.S. Forest Service – Regions 1, 4, 5 & 6**

**National Marine Fisheries Service**

**Pacific States Marine Fish Commission**

**Lower Columbia River Estuary Partnership**

**Portland General Electric**

**Columbia Land Trust**

**Salmon Creek Watershed Council**

**California Dept of Water Resources**

**City of Portland Environmental Services**

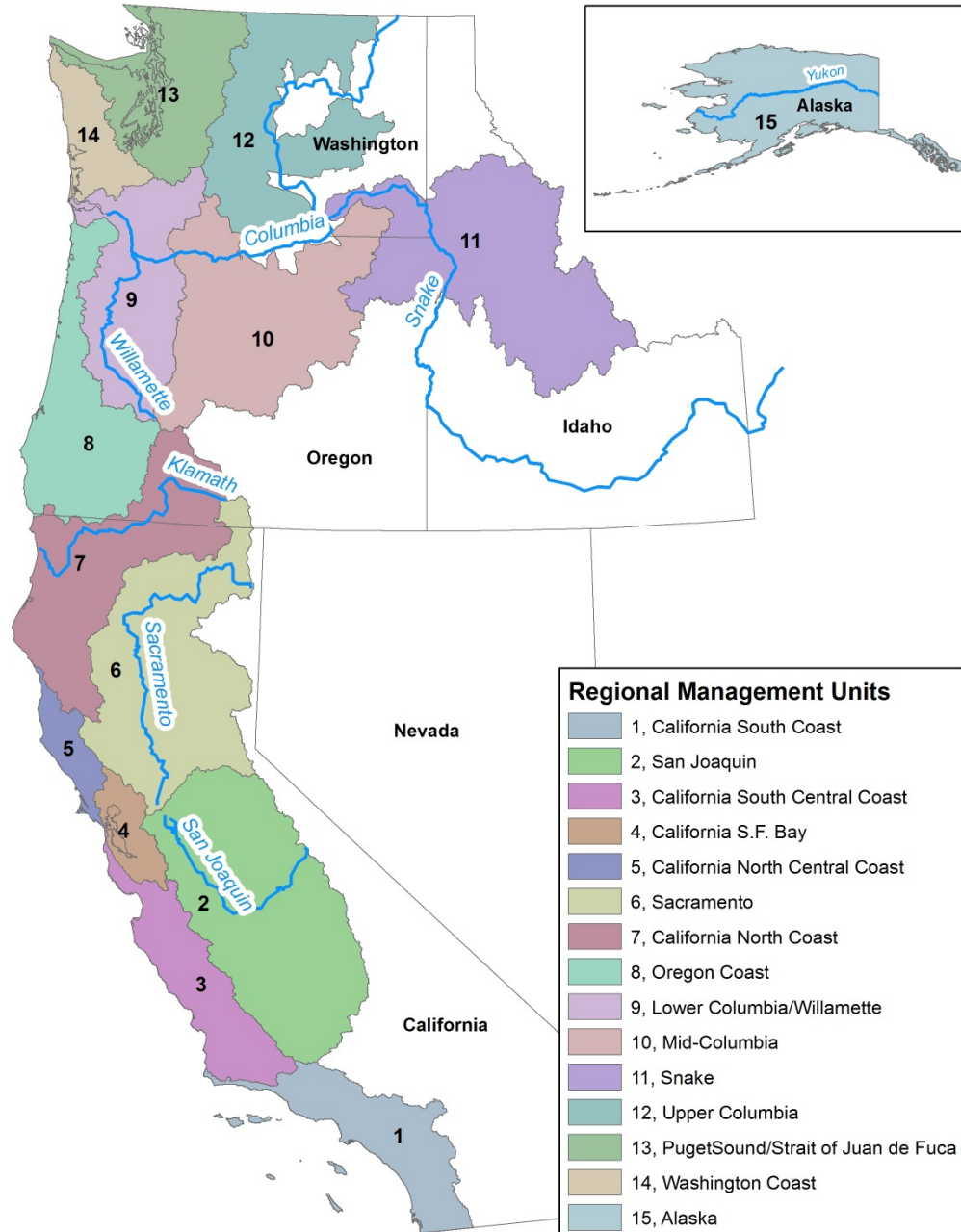
**U.S. Environmental Protection Agency – Region 10**

**Grant County PUD**

**Chelan County PUD**

**Portland Metro**

## Pacific Lamprey Regional Management Units



# Conservation Initiative = 3 Components

1. Assessment (status, trends, threats)
2. Regional Implementation Plans
3. Pacific Lamprey Conservation Agreement

Most Regional Management Units have Regional Implementation Plans.

# Regional Implementation Plans

1. Demographic information and threats to Pacific Lamprey in the Regional Management Units
2. RMU Status
3. Inventory of needed actions
4. Priority projects

RIPs are accessible online

<https://www.fws.gov/pacificlamprey/PlansMainpage.cfm>

Pacific Lamprey

2017 Regional Implementation Plan

*for the*

Upper Columbia

Regional Management Unit



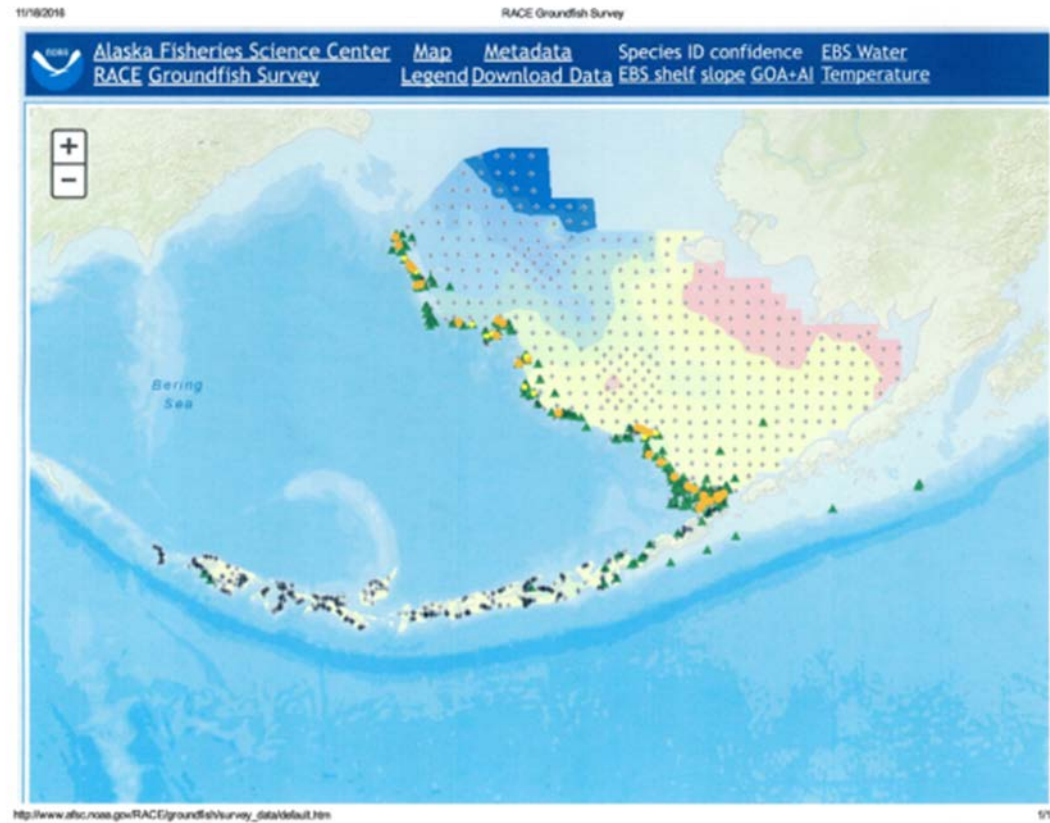
Submitted to the Conservation Team August 21, 2017

| Authors   |   |
|---|---|
| RD Nelle – US Fish and Wildlife Service                     | Patrick Verhey – WA Department Fish and Wildlife      |
| Ralph Lampman – Yakama Nation                               | John Easterbrook – WA Department of Fish and Wildlife |
| Bob Rose – Yakama Nation                                    | Sue Camp – US Bureau of Reclamation                   |
| Ann Grote – US Fish and Wildlife Service                    | Barbara Kelly-Runge – US Fish and Wildlife Service    |
| Alex Conley – Yakima Basin Fish and Wildlife Recovery Board |   |



# North Pacific Ocean RIP

- Host fish: Walleye Pollock, and Pacific Hake, Pacific Herring, Chinook Salmon, Pacific Cod.
- Found throughout the water column, most commonly found between the surface and 500 m
- Lack of information is biggest threat, prey availability, changing ocean conditions



### Policy Committee

- Directs long term strategy
- Seeks funding for implementing

### Conservation Team

- Steering Committee for the Agreement
- Reviews Regional Implementation Plans
- Recommends funding priorities
- Guides status assessment
- Develop outreach strategy

### Regional Management Units

- Develop and update Regional Implementation Plans
- Implementation

### Lamprey Technical Workgroup

- Receives technical assignments from Conservation Team or RMU groups
- Reviews regional implementation and other plans, strategies and proposals
- Disseminates technical information such as best management practices to various audiences



CONSERVATION AGREEMENT FOR  
PACIFIC LAMPREY

(*ENTOSPHEMUS TRIDENTATUS*)

in the States of  
Alaska, Washington, Oregon, Idaho, and California

2012



# Conservation Agreement

- Signed in 2012
- Partners reaffirmed commitment for another 5 years
- No changes made to Agreement



Institutionalize

# Conservation Agreement Long Term Structure

5 year - SUMMIT (s)

Development

Regional  
Implementation  
Plans

ID Discrete &  
Programmatic  
Actions

Priority Actions  
&  
Funding

RIPs  
identifies

Reports  
validate

**2017 – Established Plans**  
2016 – Refinement  
2015 – Initial Development

**2017 – Advanced Reports**  
2016 – Concept Papers (LTWG - CT)  
2015 – Inventory (from RIPs)

**2017 – Newly Developed Programs**  
2016 – Coordination of Existing  
2015 – Existing Funds

Concept

CA  
initiates RIPs

**Conservation Assessment**  
*Status – Trend – Threats- Uncertainties*

# Policy 5 Year Review

## Advancing Implementation

- **Assessment Revision**
- **Reaffirming the Conservation Agreement**
- **Regional Implementation Plans**
- **NFHP Strategic Plan**
- **Outreach**
- **Future Funding**
- **RMU Policy Engagement**

*(How can the Policy Committee and Conservation Team best support the RMU's and Implementation?)*

Thanks again  
Emily Greene!

For your  
presentation to the  
Policy Committee



# A special tribute to Roy Hunter Sampsel

*May he rest in peace,  
knowing that his important contributions  
will always be appreciated and remembered.*

*Look at the wonderful progress  
we have made together.  
And we must continue to be  
committed to make that happen.*

*That the future of this river – The  
future of this great resource –  
And how it works and how it  
continues to work should be a  
great inspiration to us, and to the  
world.*

*And I am honored to have been a  
part of it – and continue to be.*

*Thank you.*



# NWPCC/BPA Cost Savings Program

- Umbrella proposal for the Pacific Lamprey Conservation Initiative has been developed
- High Priority Projects from Columbia and Snake River Regional Implementation Plans will be considered
- Conservation Team evaluates projects
  - Project rationale
  - Threats addressed
  - Feasibility
  - Partner engagement



# NFHP Strategic Plan

Next 6-8 months will see changes to our Operation Guidelines

1. A core addition will be integration of guidance from NFHP and the NWPCC / ISRP
  - **Coupled with refinements to our project selection process to be determined**
  - **Coupled to our reporting requirements and integration of information into long-term storage / evaluation**
2. Selection and rotation of Co-Chairs; definition of responsibilities
3. Outreach goal and strategy
4. Guidance on local (RMU's) policy support

Compiled, reviewed and approved by Conservation Team in fall, 2018.

Approved by Policy Committee during the 2018 annual meeting (December).

# Lamprey Technical Workgroup

*Information Exchange - shared new findings so that new knowledge and technologies can be used throughout the lampreys range, as appropriate*

Special presentations / discussions included:

- eDNA – applications
- Passage
- Artificial Propagation
- Translocation & Genetics

Workshop is intended to occur annually



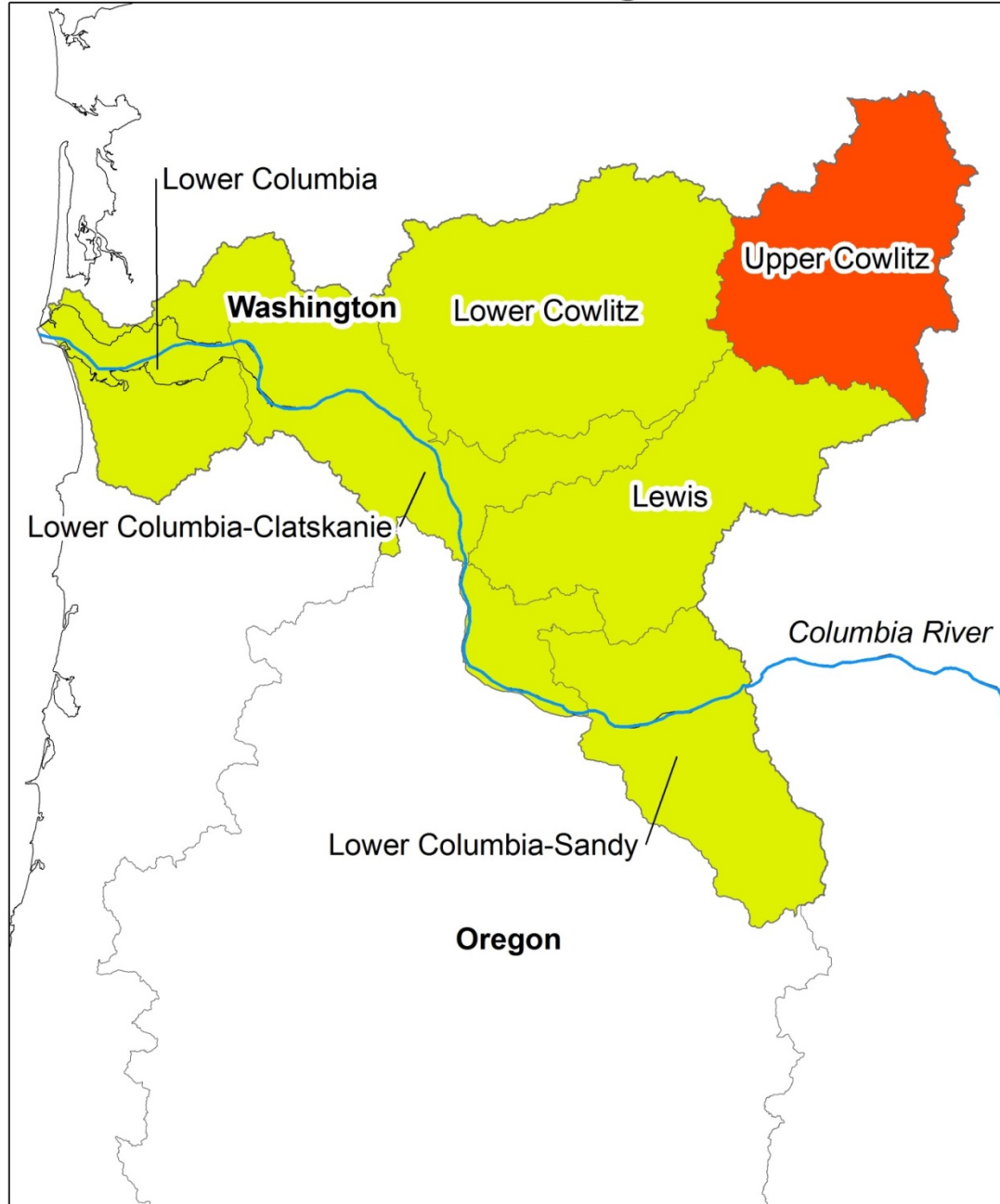


# Pacific Lamprey Assessment

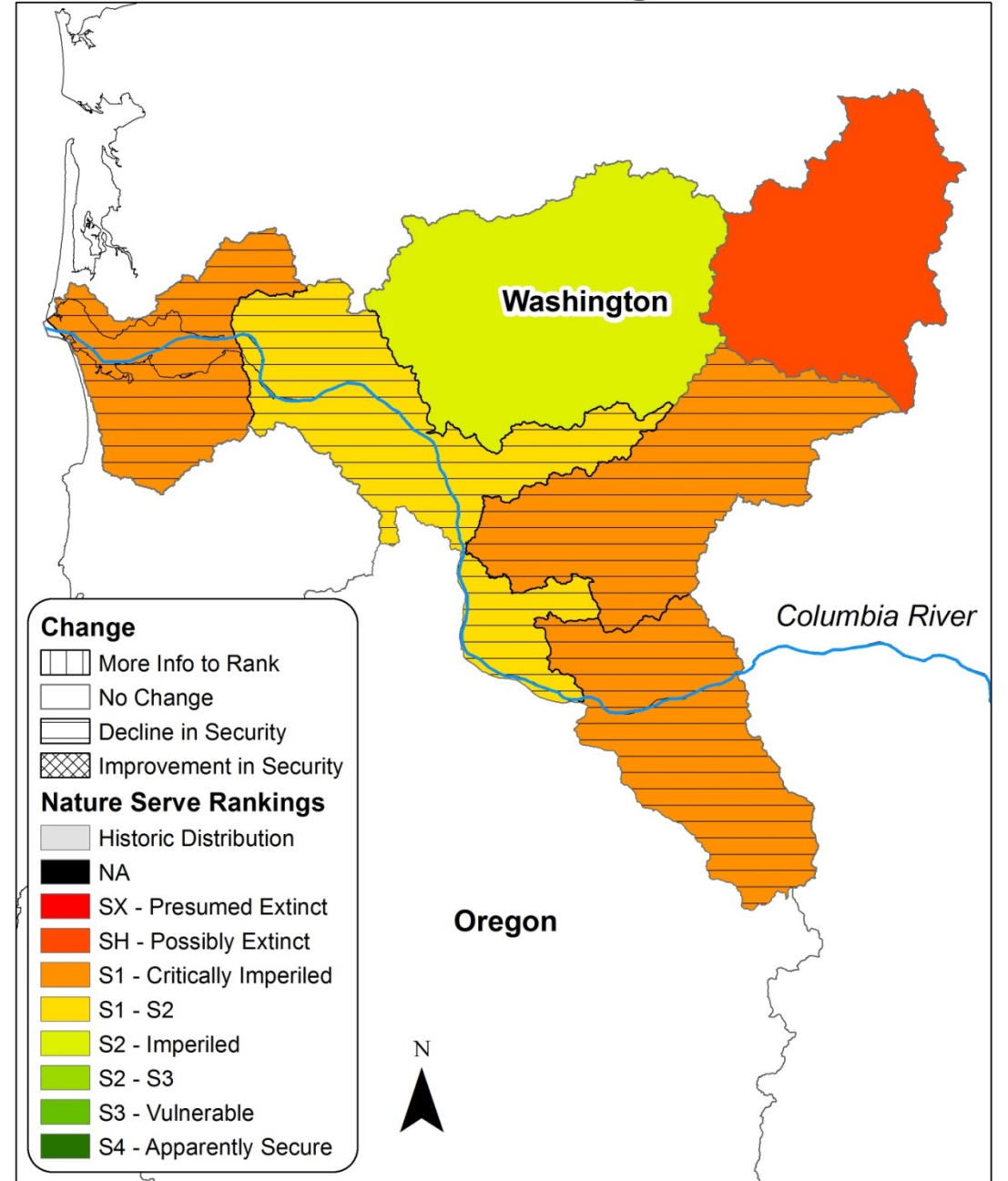
- Revised in 2017
- Available June 2018
- Population demographics
- Threats
  - Updated risk assessment



**Lower Columbia/Willamette RMU Lower Columbia Basin HUCs:  
Nature Serve Rankings 2011**



**Lower Columbia Basin HUCs:  
Nature Serve Rankings 2017**



**Change**

- More Info to Rank
- No Change
- Decline in Security
- Improvement in Security

**Nature Serve Rankings**

- Historic Distribution
- NA
- SX - Presumed Extinct
- SH - Possibly Extinct
- S1 - Critically Imperiled
- S1 - S2
- S2 - Imperiled
- S2 - S3
- S3 - Vulnerable
- S4 - Apparently Secure



# Lower Columbia Sub-Unit Priority Threats – 2017

## Dewatering and Flow Mgmt

## Passage

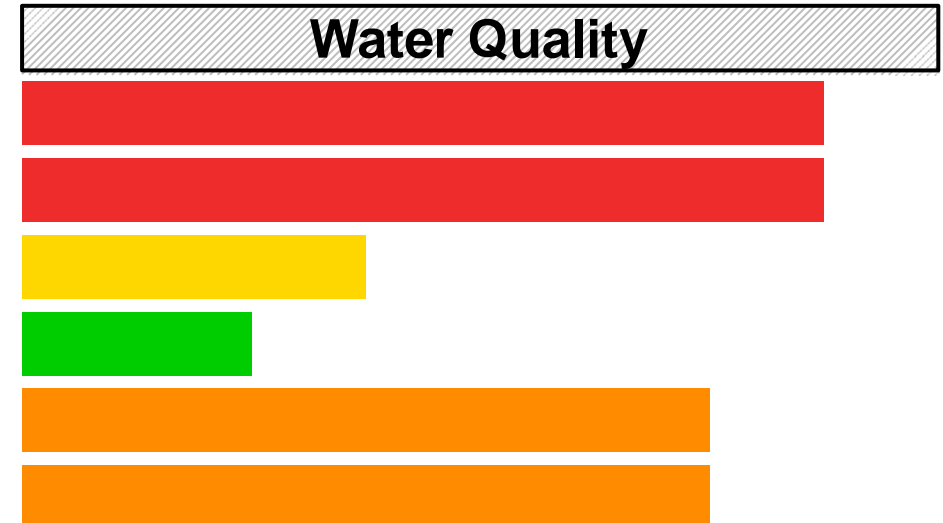
Lower Columbia  
 Lower Columbia–Clatskanie  
 Lower Cowlitz  
 Upper Cowlitz  
 Lewis  
 Lower Columbia–Sandy



## Stream and Floodplain Deg.

## Water Quality

Lower Columbia  
 Lower Columbia–Clatskanie  
 Lower Cowlitz  
 Upper Cowlitz  
 Lewis  
 Lower Columbia–Sandy



U I L M H U I L M H

Threat Level





# Lamprey Existing Funding Table

## Working Draft

Example of information on the Table

| <b>Agency Program</b>        | <b>Funding Source Title</b> | <b>Types of projects and applicants</b>  | <b>Current / Recent Application to Pacific Lamprey</b>   | <b>Average / Range of Available Funds</b>               |
|------------------------------|-----------------------------|--|--|---|
| US Fish and Wildlife Service | Pacific Northwest Funds     | Region 1 funds available for Passage, Habitat restoration, and Monitoring and evaluation | Example Projects: Yakima River adult lamprey passage study and structure development. Warm Springs hatchery adult lamprey passage structure. Umatilla River adult lamprey passage structure at 3-mile dam and Westland diversion dam | \$50-60K per project. Approximately \$100-150k per year |



# Next Steps

- Implementation of Actions
- Outreach for funding opportunities
- Continue to improve and **institutionalize** policy and technical collaboration at the local (RMU) level.







# Pacific Lamprey Conservation Initiative

*Alaska, California, Idaho, Oregon, Washington and Native American Tribes*

FOLLOW THE FWS ONLINE



## About The Initiative

What the PLCI is, why it is, history, how it came together, etc.

[Discover more...](#) >

Assessment

Agreement

Plans

## FEATURES



### *Passage Guidelines for Pacific Lamprey in Fishways*



*The Pacific Lamprey Technical Workgroup has released guidelines on modifications that can be*



PACIFIC LAMPREY MAPS!



DATA CLEARINGHOUSE



LAMPREY FACT SHEETS



Questions?

