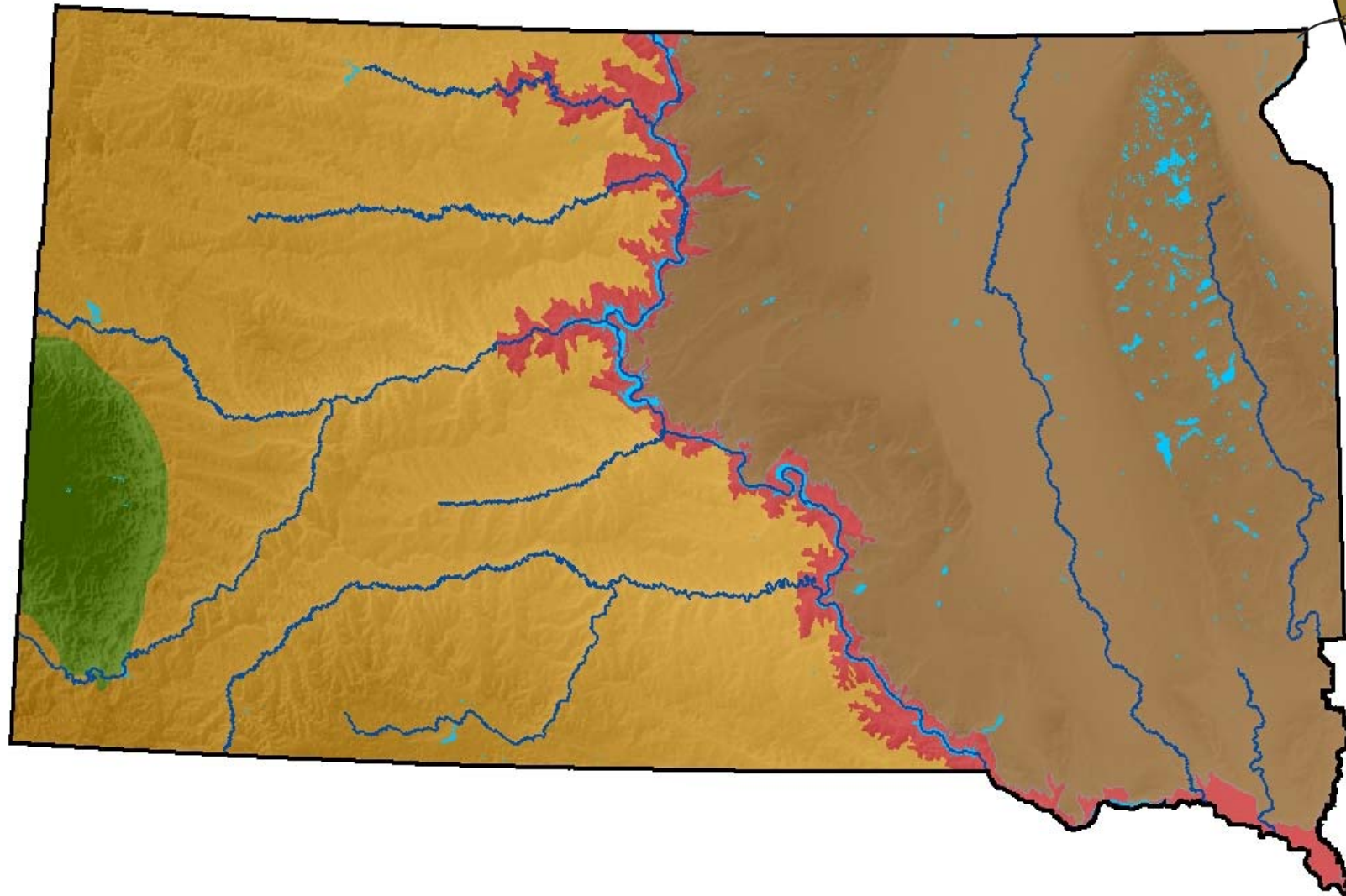


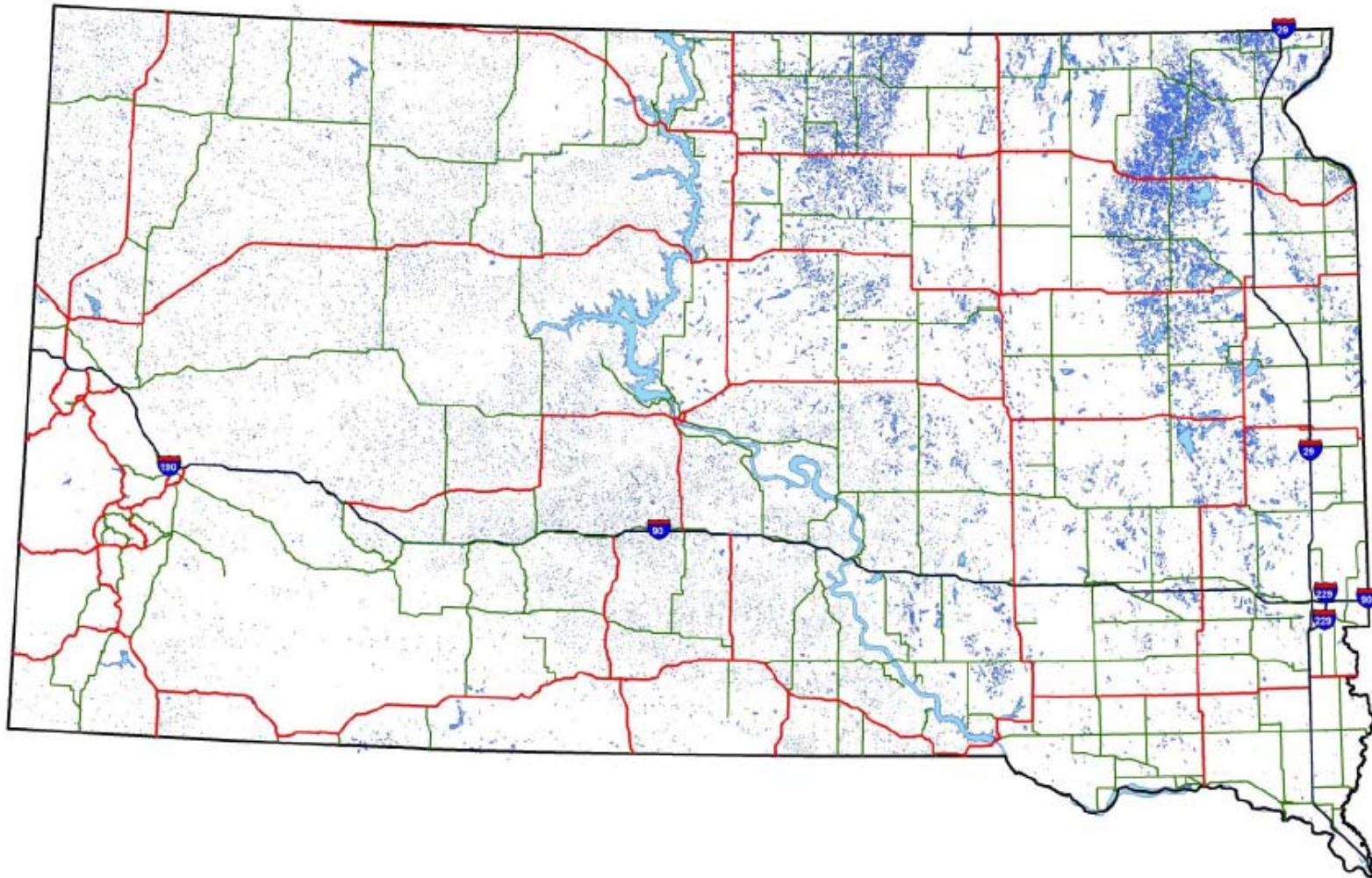


Welcome to South Dakota!

Fish Habitat Landscape

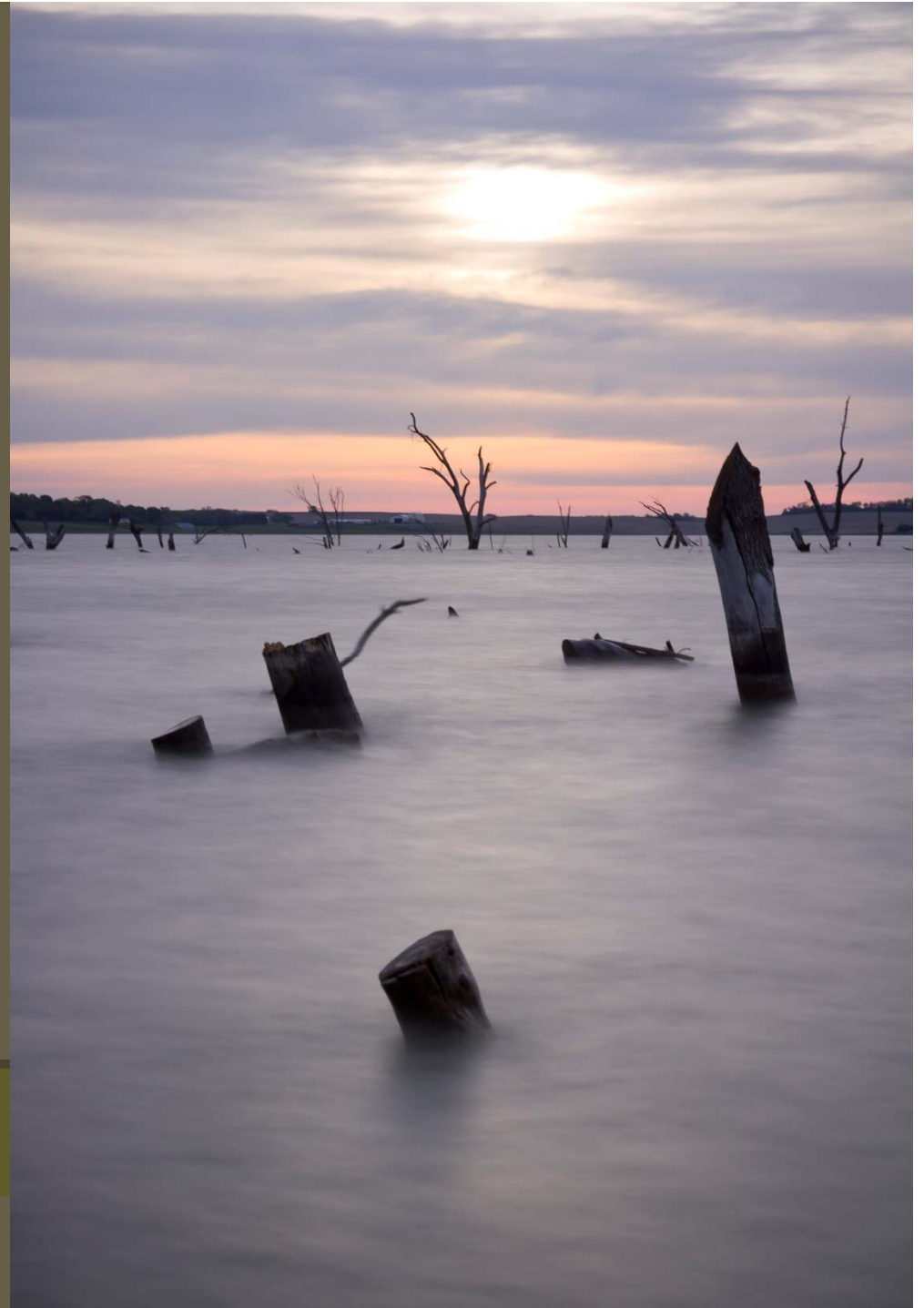


South Dakota's Water Resources





Recreational Use of Water over Private Land



Lakebed Ownership

5. LAKES, PONDS, ETC. – Lakes embracing an area of less than *forty acres* will not be meandered.

Shallow lakes or bayous, likely in time to dry up or be greatly reduced by evaporation, drainage, or other cause, will not be meandered however extensive they may be, but such lakes should be described, and the facilities for drainage or prospect of becoming dry from natural causes stated.

(United States Surveying Manual, page 48)



Manual of United States Surveying.

SYSTEM

OF

RECTANGULAR SURVEYING

EMPLOYED IN SUBDIVIDING THE

PUBLIC LANDS OF THE UNITED STATES;

ALSO

INSTRUCTIONS FOR SUBDIVIDING SECTIONS AND RESTORING
LOST CORNERS OF THE PUBLIC LANDS.

Illustrated with Forms, Diagrams and Maps;

CONSTITUTING A

COMPLETE TEXT-BOOK OF GOVERNMENT SURVEYING.

FOR THE USE OF U. S. DEPUTY SURVEYORS, COUNTY SURVEYORS, AND ALL
WHO CONTEMPLATE ENTERING THE PUBLIC SURVEYING SERVICE.

TO WHICH IS ADDED

AN APPENDIX

CONTAINING INFORMATION IN REGARD TO ENTERING, LOCATING,
PURCHASING AND SETTLING LANDS UNDER THE
VARIOUS LAND LAWS, ETC. ETC.

By J. H. HAWES,

LATE PRINCIPAL CLERK OF SURVEYS IN THE GENERAL LAND OFFICE.

PHILADELPHIA:

J. B. LIPPINCOTT & CO.

1868.



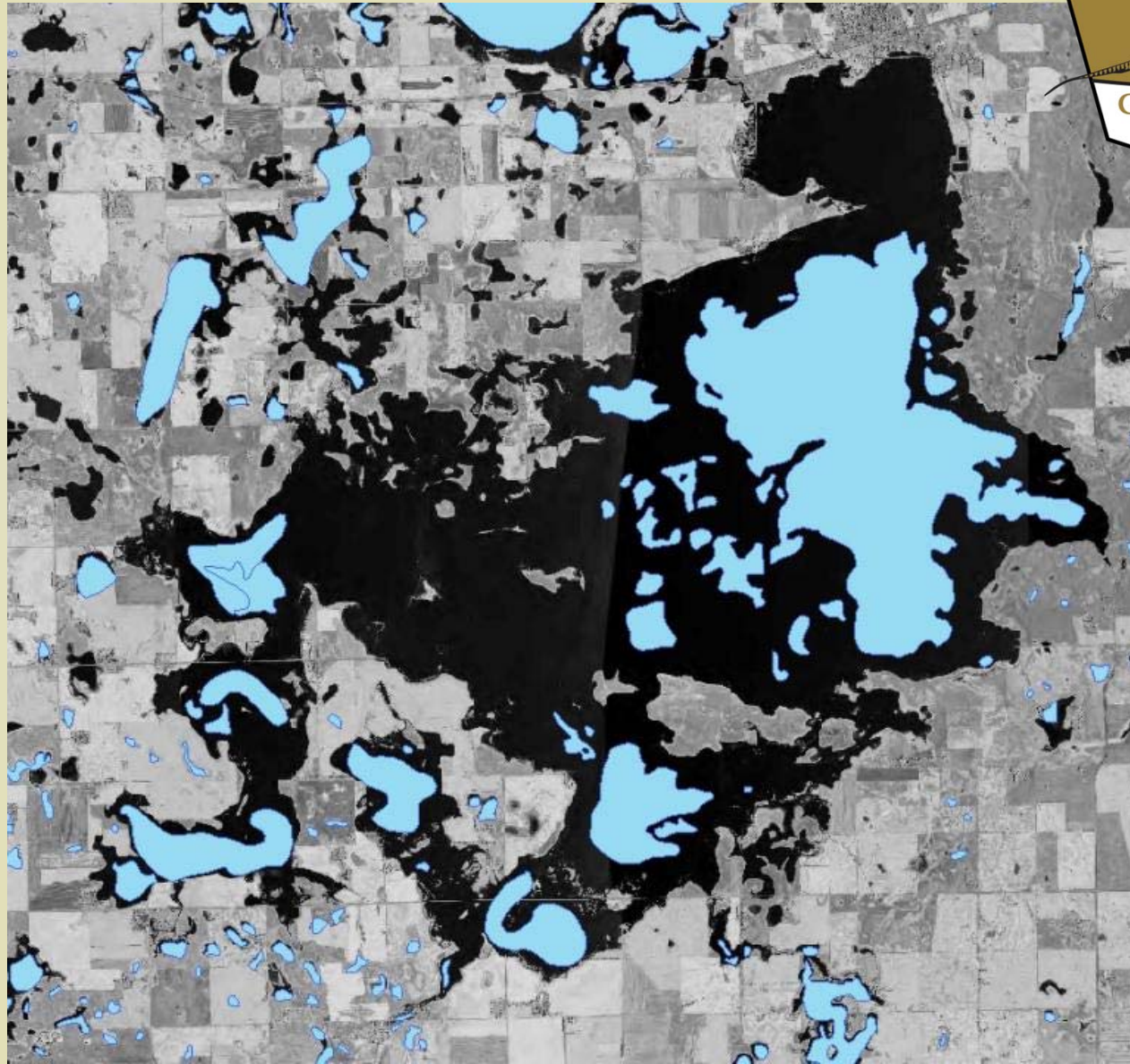
Bitter Lake

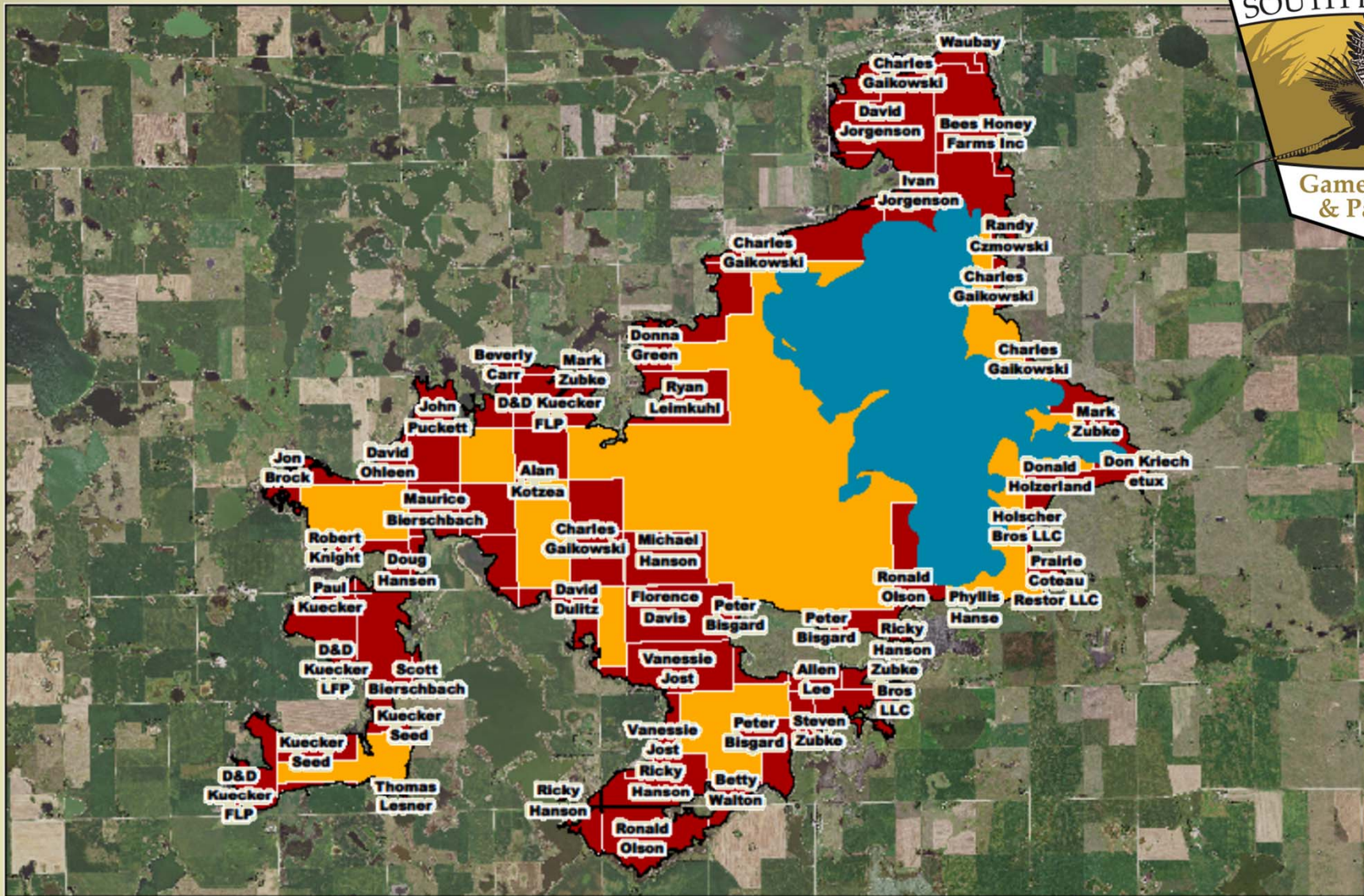
1991

3,500 ac

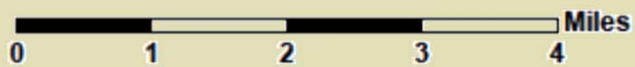
2012

18,000+ ac

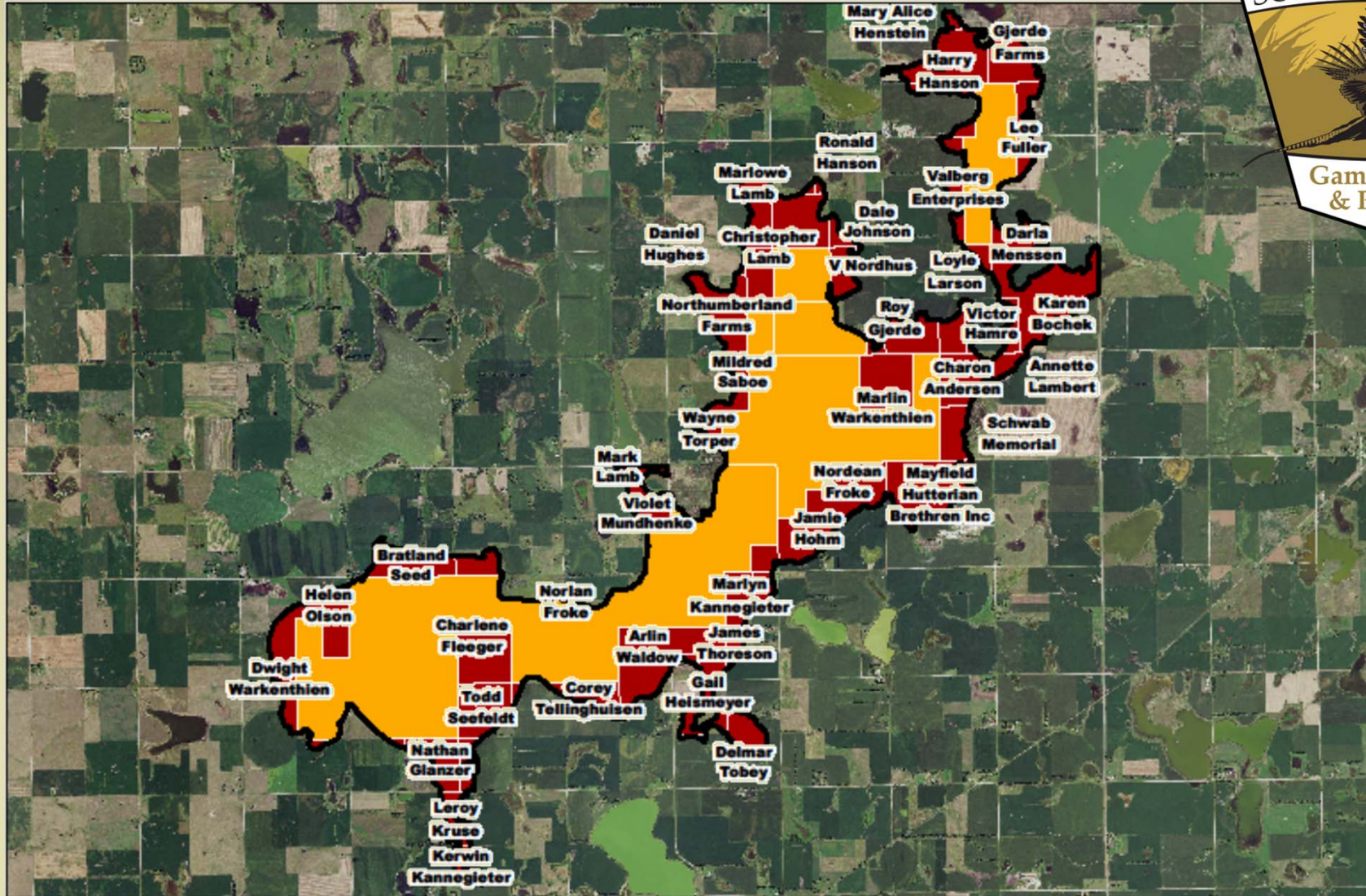




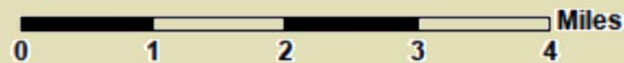
Bitter Lake - Day County



-  2016 Lake Boundary
-  Meandered Lake Boundary
-  Private Parcels - 46 Owners
-  Public Land



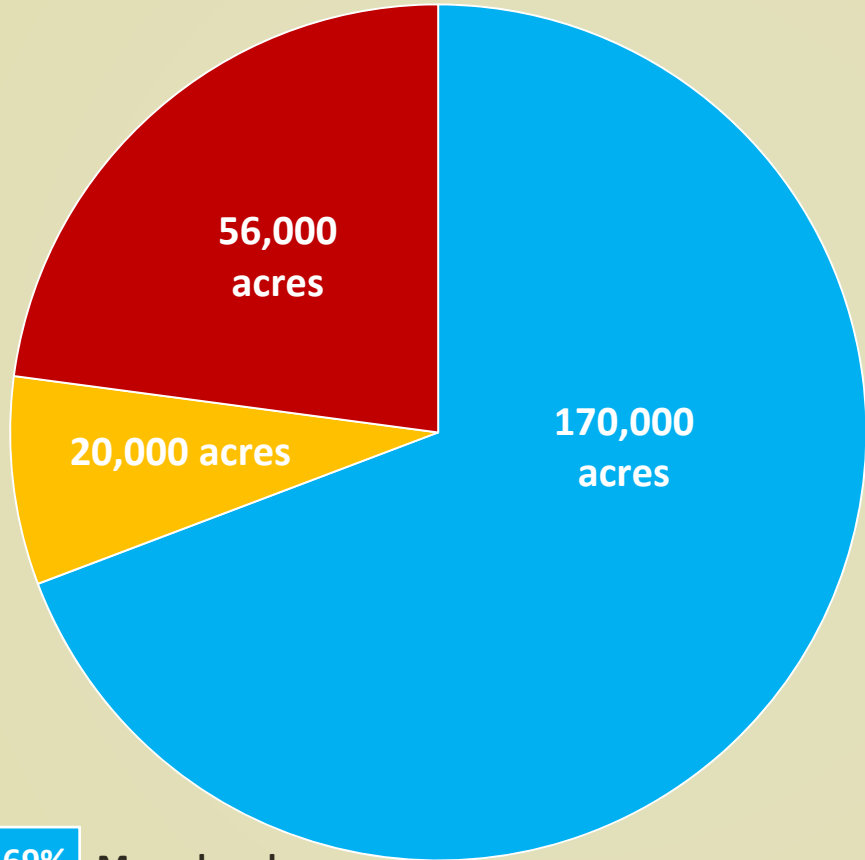
Dry Lake #2 - Clark County



-  2016 Lake Boundary
-  Private Parcels - 48 Owners
-  Public Land

Meandered Lakes

267 lakes
246,000 acres



69%

Meandered

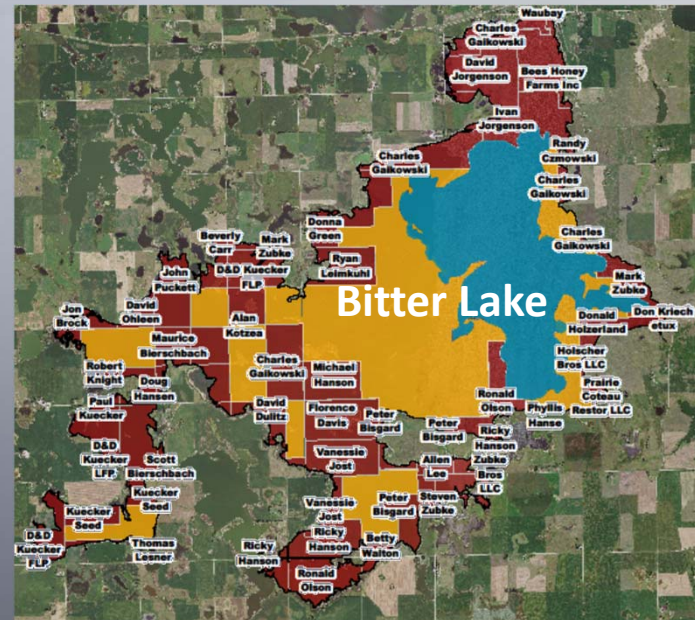
8%

Public deeded

23%

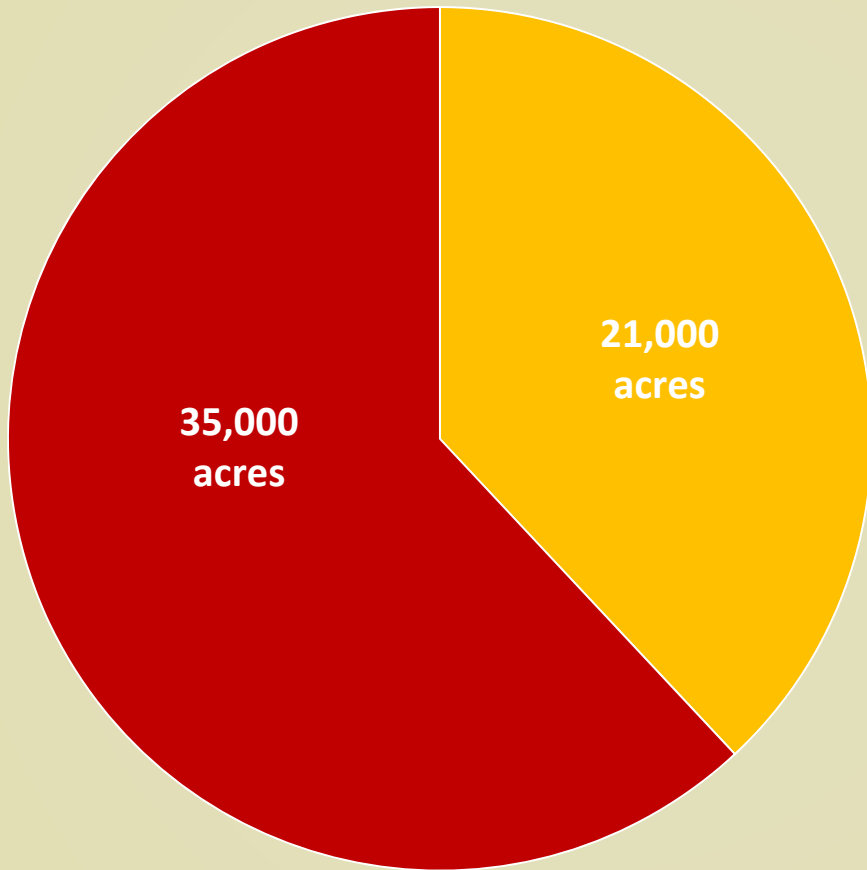
Private deeded

Note: currently, 115 of these 267 meandered lakes do not provide any fishing opportunity



Non-meandered Lakes with Fishing

91 lakes
56,000 acres



38% Public deeded

62% Private deeded

Size (ac)	#	acres
6-40	7	150
41-80	5	400
81-160	13	1,400
160+	67	54,000

