



USGS CSASL Supporting Role NFHP Science & Data

NFHP Board Meeting

“To those devoid of imagination a blank place on the map is a useless waste; to others, the most valuable part.” -Aldo Leopold

Daniel Wieferich (USGS)

October 17, 2018



U.S. Geological Survey Mission Areas

- **Core Science Systems -> CSASL (Wieferich*)**
 - Characterizing and understanding complex Earth and biological systems through research, modeling, mapping, and the production of high-quality data
- **Ecosystems**
- **Energy and Minerals**
- **Environmental Health**
- **Land Resources (e.g. Doug Beard)**
- **Natural Hazards**
- **Water Resources (e.g. Peter Ruhl)**



CSASL Biogeographic Characterization

National Scale Products

- Protected Areas Database (PAD-US 2.0)
- Ocean Biogeographic Information System USA
- GAP Analysis Range and Distributions
- National Vegetation Classification System (NVCS)
- Integrated Taxonomic Information System (ITIS)
- Biodiversity Information Serving Our Nation (BISON)
- Dam Removal Information Portal (DRIP)
- Species of Greatest Conservation Need (SGCN) National List
- ***National Fish Habitat Assessment (NFHP 2010, 2015)***

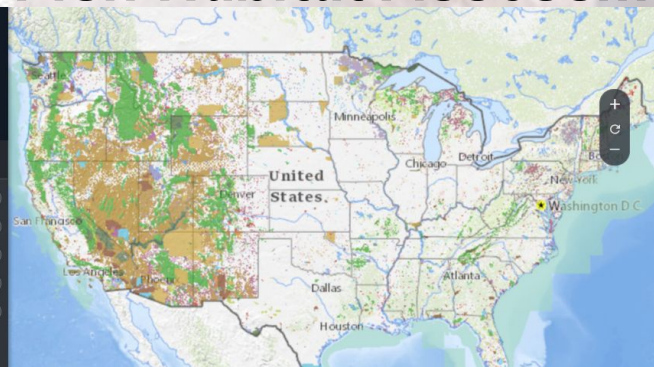
Protected Areas Database of the U.S. version 1.4

The Protected Areas Database of the United States (PAD-US) is the official inventory of protected open space in the United States.

more...

PAD-US Map Layers

- GAP Status Code
- Manager Name
- Manager Type
- Protected Areas by Manager
- Public Access



NATIONAL FISH HABITAT PARTNERSHIP

THROUGH A FISH'S EYE:
THE STATUS OF FISH HABITATS
IN THE UNITED STATES
2015

This report summarizes the results of an unprecedented nationwide assessment of human effects on fish habitat in the rivers and estuaries of the United States. The assessment assigns a risk of current habitat degradation scores for watersheds and estuaries across the nation and within 14 sub-regions. The results also identify some of the major sources of habitat degradation.

Navigate this report by:

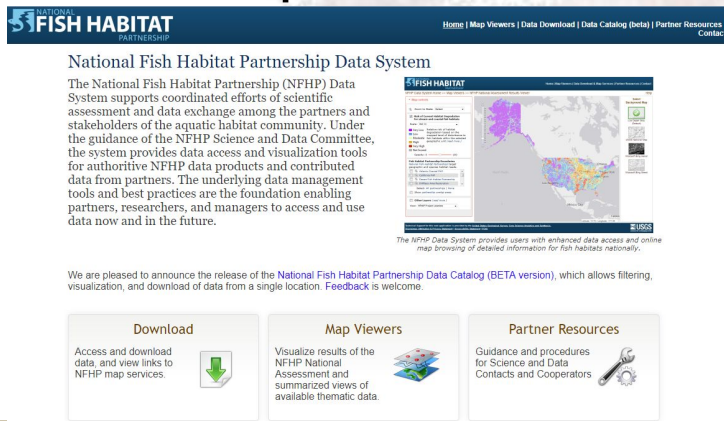
[Explore the Assessment](#) [Explore Regions](#)



CSASL Biogeographic Characterization

Past Science & Data Contributions

- Co-Lead S&D Committee (Andrea Ostroff)
- Leverage MSU Cooperative Agreements to help produce nationally consistent datasets and conduct 2010 and 2015 NFHP national assessments
- Assisted FHP and National team in Data Release
- Developed and maintained NFHP Data System (2010)
- Developed NFHP 2015 Through A Fish's Eye Report



NATIONAL FISH HABITAT PARTNERSHIP

Home | Map Viewers | Data Download | Data Catalog (beta) | Partner Resources | Contact

National Fish Habitat Partnership Data System

The National Fish Habitat Partnership (NFHP) Data System supports coordinated efforts of scientific assessment and data exchange among the partners and stakeholders of the aquatic habitat community. Under the guidance of the NFHP Science and Data Committee, the system provides data access and visualization tools for authoritative NFHP data products and contributed data from partners. The underlying data management tools and best practices are the foundation enabling partners, researchers, and managers to access and use data now and in the future.

The NFHP Data System provides users with enhanced data access and online map browsing of detailed information for fish habitats nationally.

We are pleased to announce the release of the **National Fish Habitat Partnership Data Catalog (BETA version)**, which allows filtering, visualization, and download of data from a single location. [Feedback](#) is welcome.

Download	Map Viewers	Partner Resources
Access and download data, and view links to NFHP map services.	Visualize results of the NFHP National Assessment and summarized views of available thematic data.	Guidance and procedures for Science and Data Contacts and Cooperators.



THROUGH A FISH'S EYE: THE STATUS OF FISH HABITATS IN THE UNITED STATES 2015

This report summarizes the results of an unprecedented nationwide assessment of human effects on fish habitat in the rivers and estuaries of the United States. The assessment assigns a risk of current habitat degradation scores for watersheds and estuaries across the nation and within 14 sub-regions. The results also identify some of the major sources of habitat degradation.

Navigate this report by:

[Explore the Assessment](#)

[Explore Regions](#)

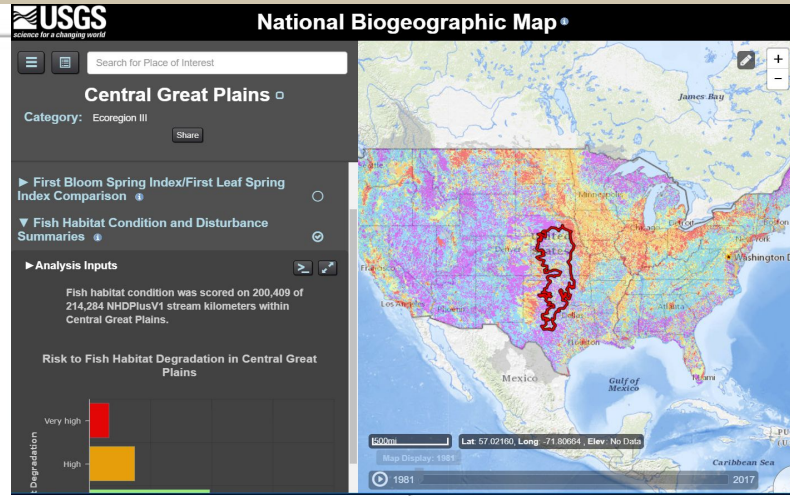


Looking Forward: National Biogeographic Map

<https://maps.usgs.gov/biogeography>

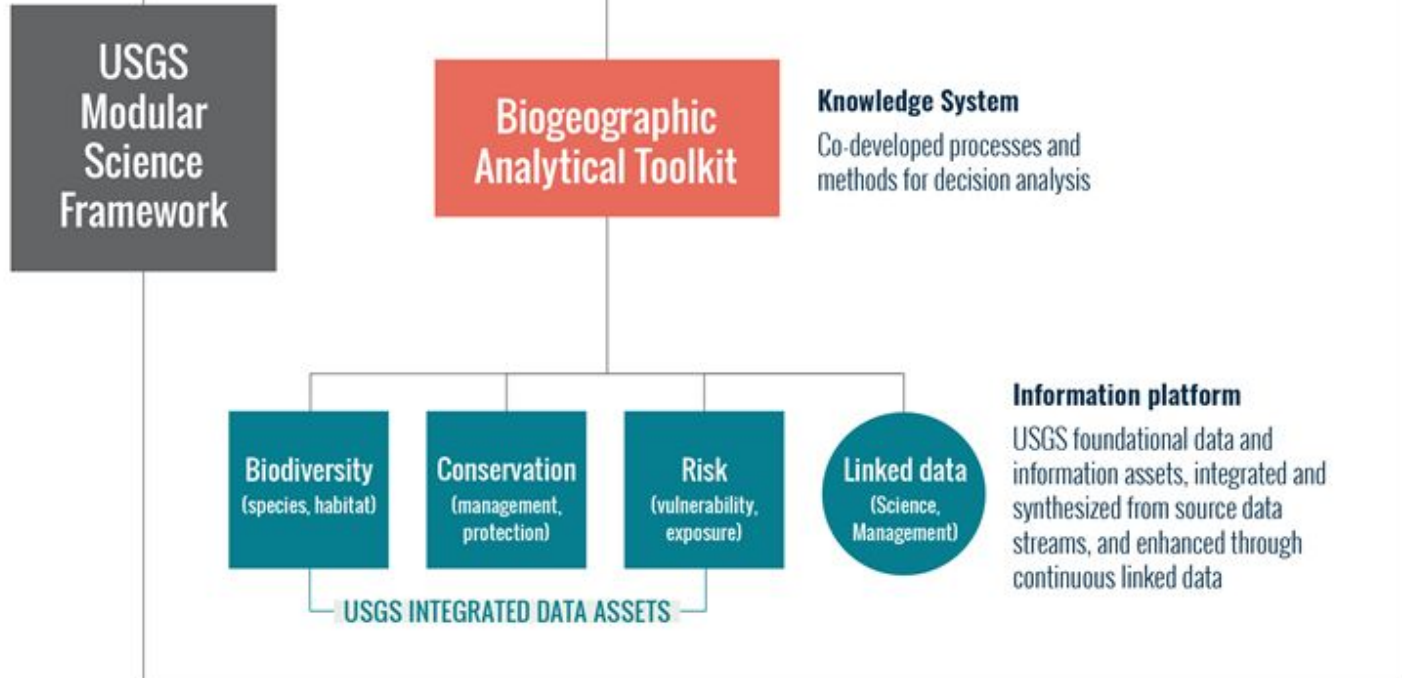
Species and Habitats

- LOCATION
- PROTECTION STATUS
- THREATS AND STRESSORS
- MANAGEMENT OPTIONS



Explore management questions

Rapid response to: what species where, how well protected, how vulnerable, what options?

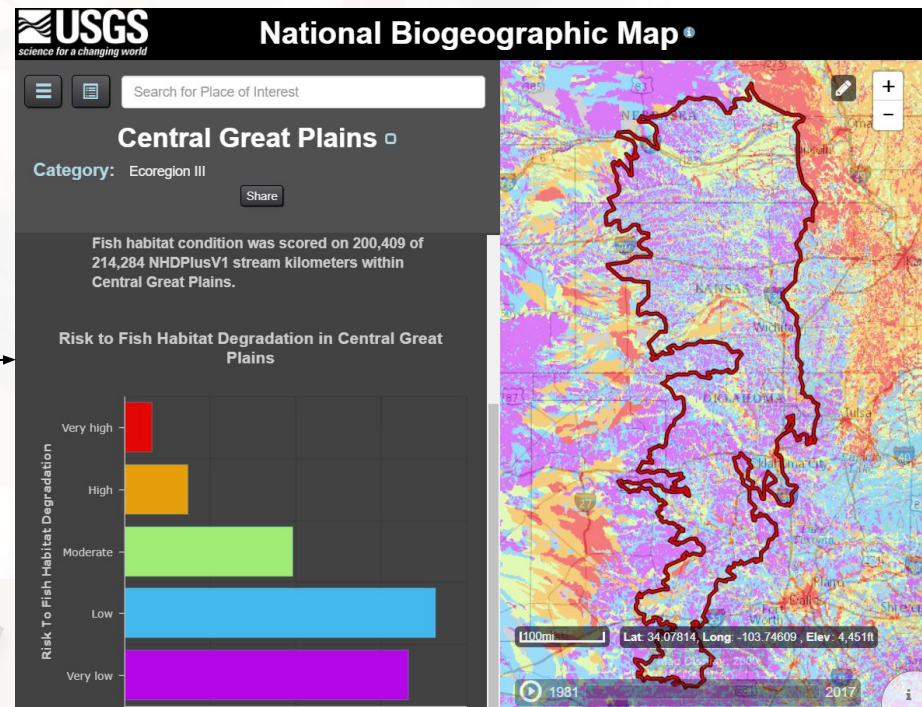
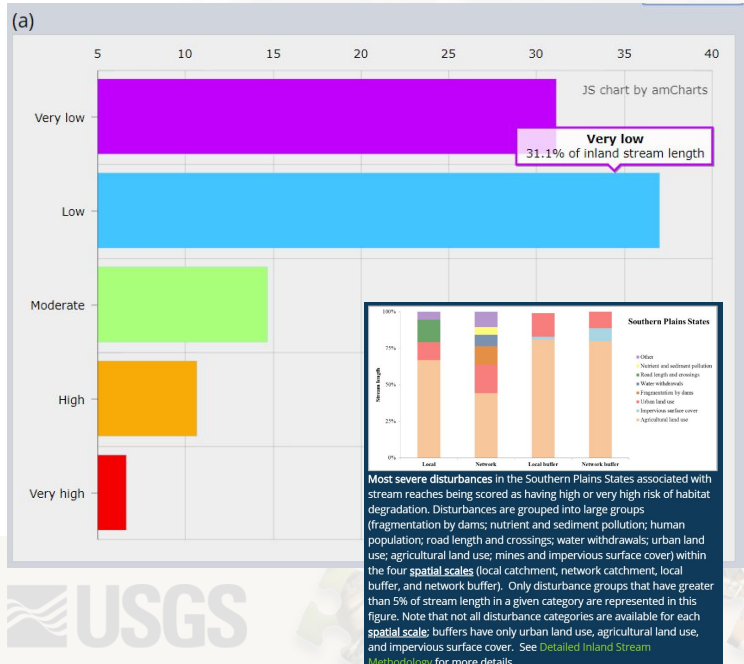


Looking Forward: Working With FHPs Use Case

Summarize 2015 NFHP disturbance and condition data to any jurisdictional or ecological boundary of interest

National Biogeographic Map -> same analysis, multiple spatial unit summaries to choose from

Through A Fish's Eye State Groupings

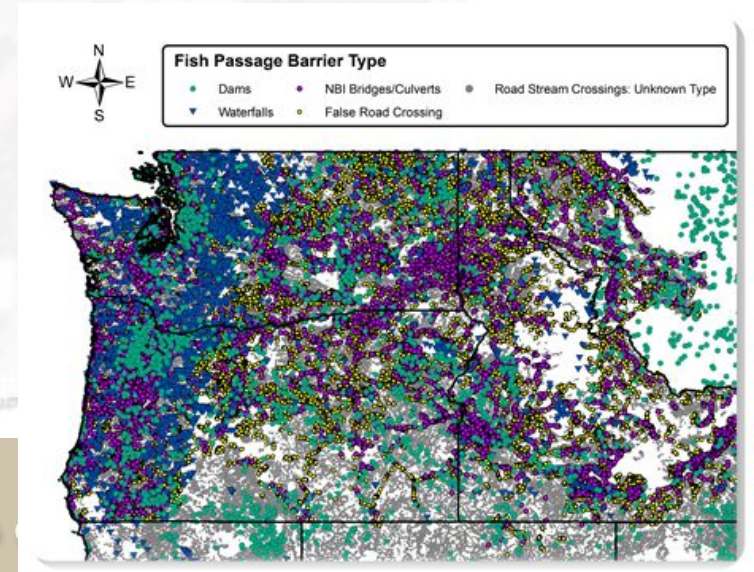
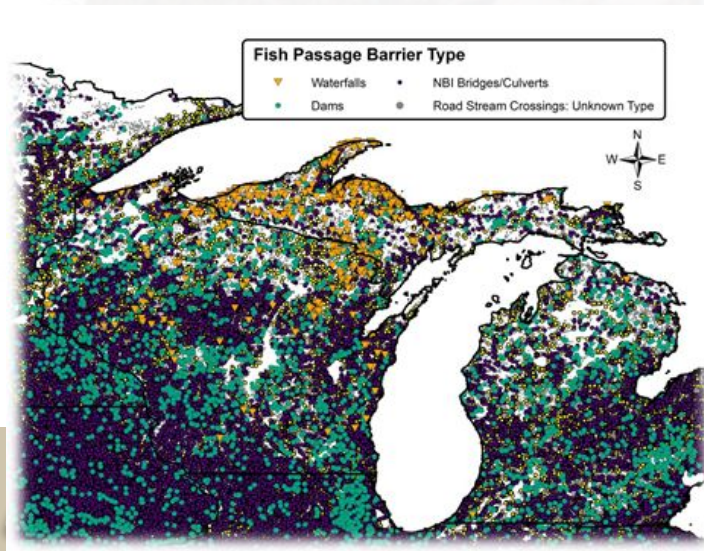


Looking Forward: Working With FHPs

Use Case Connectivity

Work together with FHPs to:

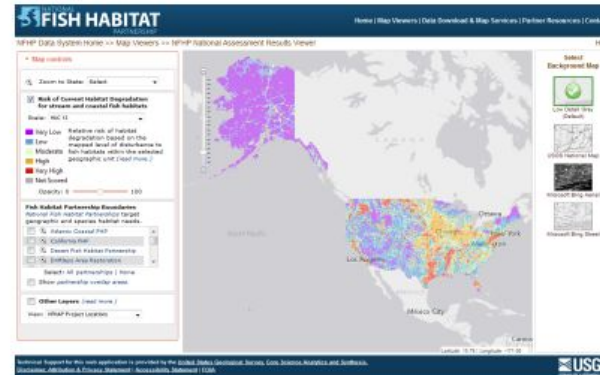
- **What analyses and information to focus on that will directly impact FHP decisions and science**
- **Improve upon and/or build national data from regional efforts**



Looking Forward: NFHP Data System / Catalog

National Fish Habitat Partnership Data System

The National Fish Habitat Partnership (NFHP) Data System supports coordinated efforts of scientific assessment and data exchange among the partners and stakeholders of the aquatic habitat community. Under the guidance of the NFHP Science and Data Committee, the system provides data access and visualization tools for authoritative NFHP data products and contributed data from partners. The underlying data management tools and best practices are the foundation enabling partners, researchers, and managers to access and use data now and in the future.



The NFHP Data System provides users with enhanced data access and online map browsing of detailed information for fish habitats nationally.

We are pleased to announce the release of the [National Fish Habitat Partnership Data Catalog \(BETA version\)](#), which allows filtering, visualization, and download of data from a single location. [Feedback](#) is welcome.

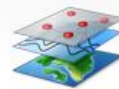
Download

Access and download data, and view links to NFHP map services.



Map Viewers

Visualize results of the NFHP National Assessment and summarized views of available thematic data.



Partner Resources

Guidance and procedures for Science and Data Contacts and Cooperators



Thank you!!!

- **Questions**
- **Feedback**
- **Discussion**

Daniel Wieferich - dwieferich@usgs.gov

